



helloworld
TRAVEL
THE TRAVEL PROFESSIONALS

WESTERN AUSTRALIA

INCLUDING BROOME & THE KIMBERLEY

VIVA
HOLIDAYS

CELEBRATING

50
Years
OF TRAVEL

EXPERIENCE WESTERN AUSTRALIA WITH VIVA HOLIDAYS!

Visit cosmopolitan Perth, buzzing with rooftop bars, hidden laneways and Instagram-worthy restaurants and cafés. Sample gourmet food and wine in the Margaret River region and snorkel UNESCO World Heritage Listed Ningaloo Reef. Walk on the moonscape of the Pinnacles Desert in Nambung National Park and see the unique rock formations that form the Bungle Bungles in Purnululu National Park. For a different perspective, relax on a cruise through the Kimberley region. As diverse as it is vast, there are plenty of reasons to holiday in Western Australia.

Viva Holidays is proud to be celebrating 50 years in the travel business. Trust us to make your dream Western Australian holiday a reality.

CHOOSE VIVA HOLIDAYS AND LIVE A LIFE OF TRAVEL.





You'll have a dress-circle seat to view stunning King George Falls, the highest twin falls in Western Australia, aboard a Kimberley cruise

Copyright Tourism Western Australia/@aeroture_au



Copyright Tourism Western Australia

Elizabeth Quay, Perth



Copyright Tourism Western Australia

The Lake House, Denmark

CONTENTS

Navigating This Brochure	5
Travel Tips	7
Experiences You'll Love	8
Self Drive Holidays	10
Car Hire	12
Campervan and Motorhome Hire	14
Touring	15
Perth & Surrounds	18
Rottne Island	30
Margaret River Region & The South West	32
Coral Coast	37
Broome & The Kimberley	42
Kimberley Cruising	55
Accommodation Index	58
Booking Conditions	59



CELEBRATING



WHY CHOOSE VIVA HOLIDAYS

Viva Holidays has been creating exceptional worldwide holiday experiences for 50 years. Your arrangements will be managed by our travel specialists who are dedicated to servicing enquiries to your chosen destination and are experts at designing holidays to perfectly suit your travel needs. You'll always be in experienced hands when you travel with Viva Holidays.

MORE CHOICE

Our extensive product range caters for every type of holiday. Accommodation, car hire, theme parks, attractions, day and extended tours, rail tours and cruises – we've got it covered.

We have incredible deals available throughout the year, so make sure you ask your travel agent for our best price.

EXCEPTIONAL SERVICE

Exceptional customer service is behind everything we do. That's why we were recognised as the Most Outstanding Wholesaler – Product/Service at the 2023 National Travel Industry Awards. Our team are passionate about travel and providing outstanding service. Let us do the research, planning and booking to ensure your holiday is one you'll always remember.



NATIONAL TRAVEL INDUSTRY AWARDS

2023 WINNER

PEACE OF MIND

Viva Holidays is a proud member of ATAS, the Australian Federation of Travel Agents Travel Accreditation Scheme, having met the strict financial and customer service accreditation criteria. When you book your holiday with Viva Holidays, you will have peace of mind knowing that you are booking with one of Australia's most trusted travel companies.

24/7 ASSISTANCE

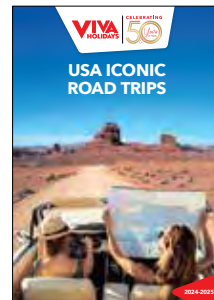
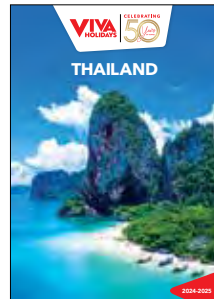
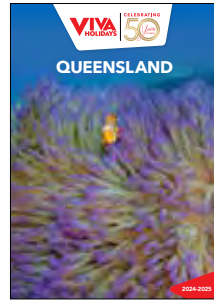
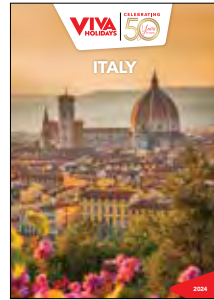
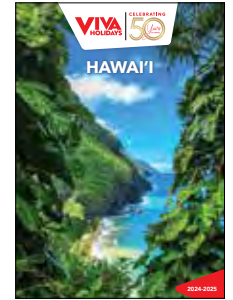
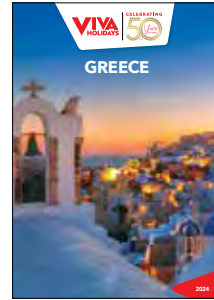
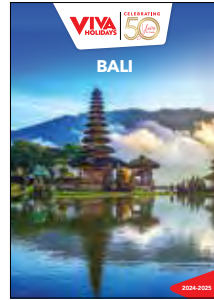
When you book with Viva Holidays, you'll never be on your own. In the event of unforeseen circumstances, our customer care team is available 24 hours a day, seven days a week.

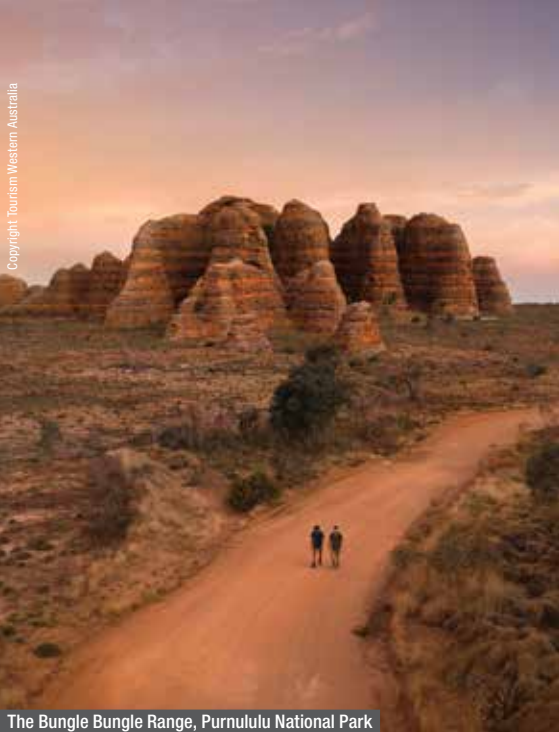
TAILOR MADE HOLIDAYS

Whether it's swimming with whale sharks at Ningaloo, sampling a crisp chardonnay in the Margaret River region or getting up close and personal with a friendly quokka on Rottnest Island, our team of travel specialists can design a custom made itinerary just for you!

Let us create your dream holiday today.

LIVE A LIFE OF TRAVEL. LET VIVA HOLIDAYS TAKE YOU THERE!





The Bungle Bungle Range, Purnululu National Park



Lucky Bay, Cape Le Grand National Park



Gantheaume Point, Broome

NAVIGATING THIS BROCHURE

The following symbols should be used as a guide to assist in choosing the accommodation or touring option that best suits your needs.

Our Destination Specialists have negotiated a range of special offers including free meals, free nights, early bird booking discounts and more. Look for the following symbols on individual property listings and ask your travel agent for full details of the offer available.



Early Bird Offer

A discount off the regular room price is available at certain times of the year for advance bookings.



Kids Dining Offer

A dining offer for children is available, e.g. discounted or free meals. Child ages, meal types and conditions vary.



Free Night Offer

Receive one or more free nights for stays at certain times of the year.



Honeymoon Offer

A special bonus offer is available if you are celebrating your honeymoon. This may include sparkling wine, flowers, chocolate or fruit platters, welcome drinks, romantic dinners, spa treatments, late check-out or room upgrades. A minimum stay may be required and conditions vary. Advise your travel agent at the time of booking.



Bonus Offer

A bonus offer is available at certain times of the year, e.g. free breakfast, food and beverage credit, spa treatment, late check-out, room upgrade and more.

SYMBOL GUIDE



Properties offering free Wi-Fi access in common areas and rooms.



Properties offering in-room disabled facilities.



Properties offering family friendly facilities, which may include a kids club, kids eat free offer, family or interconnecting rooms and discounts off a second room.



Properties featuring an all inclusive price with breakfast, lunch and dinner included. Some properties may also include beverages, day excursions and activities. Conditions may apply. Ask your travel agent at the time of booking for further details.



Denotes a small group tour. The number on the symbol indicates the maximum number of passengers on a tour.

OUR RATINGS

The accommodation ratings featured in this brochure will provide a general indication of the standard of accommodation and may alter throughout the year due to a change of circumstance. These are our views and are not related to any other rating system. We recommend checking with your travel agent to find the accommodation that best suits your needs and budget.



Comfortable



Superior



Deluxe



Half rating



Longreach Bay, with its expansive white sand beach and crystal-clear turquoise water, is the ideal spot for a relaxing day on Rottnest Island





Copyright Tourism Western Australia

TRAVEL TIPS

WHEN TO GO

Most of Western Australia offers a temperate climate of four noticeable seasons annually. The Broome and the Kimberley region has two distinct seasons. The dry season (April to September) brings bright sunny days and cool nights and the green season (October to March) is hot and humid with short downpours in the late afternoon and evening. During the green season, some attractions may not be accessible due to road closures and local flooding.

GETTING AROUND

BY CAR

Take the time to explore and discover as you make your way through Western Australia by road. We offer a selection of suggested driving itineraries, providing you with the freedom to see Western Australia at your own pace. See pages 10 to 11 for Self Drive Holidays and pages 12 to 14 for car hire, campervan and motorhome options.

Speed limits apply in all urban areas and highways of Western Australia. Travellers should drive at a speed that suits the road, vehicle, weather conditions and driving experience. Avoid driving after dark as cattle and wildlife often congregate alongside outback highways.

In remote parts of Western Australia, driving slowly on gravel roads is recommended.

During the summer period (October to March) in the Kimberley, road closures due to flooding are common, particularly on unsealed roads. Road trains are a unique aspect of travelling in this region. They can be up to 50 metres in length and extra care should be taken when overtaking.

NATIONAL PARK & ATTRACTION PASSES

All visitors must purchase a National Park Pass or Attraction Pass prior to entering most National Parks and Conservation Parks. As this fee is not payable directly to the accommodation provider or tour operator, and because there are numerous options available, this fee is not included in the prices featured on individual accommodation and tour listings in this brochure, unless otherwise specified. For details on the various options available and how to purchase passes, visit exploreparks.dbca.wa.gov.au/park-entry-fees and exploreparks.dbca.wa.gov.au/attraction-fees.

ABORIGINAL CULTURE & PERMITS

Transit Permits to visit Indigenous communities are granted through the Aboriginal Lands Trust and are designed to help preserve Aboriginal heritage and culture. It is best to choose a tour where operators already have permission to enter the land.

WATER SAFETY

Australia has some of the world's best beaches, however care and caution should be exercised at all times. Please remember to swim between the red and yellow flags and listen to instructions from lifesavers and lifeguards. Marine stingers are most prevalent along the Kimberley coastline from November to April. In remote parts of the Kimberley, Salt and Freshwater crocodiles are found in estuaries, rivers and billabongs, so always observe warning signs. If you are not sure, do not swim.

SCHOOL HOLIDAYS 2024/25

Queensland

29 Mar – 14 Apr, 22 Jun – 7 Jul, 14 – 29 Sep, 14 Dec 24 – 27 Jan 25

New South Wales

13 – 28 Apr, 6 – 21 Jul, 28 Sep – 13 Oct, 21 Dec 24 – 2 Feb 25

Victoria

29 Mar – 14 Apr, 29 Jun – 14 Jul, 21 Sep – 6 Oct, 21 Dec 24 – 28 Jan 25

Australian Capital Territory

13 – 28 Apr, 6 – 21 Jul, 28 Sep – 13 Oct, 18 Dec 24 – 2 Feb 25

Tasmania

12 – 28 Apr, 6 – 22 Jul, 28 Sep – 13 Oct, 21 Dec 24 – 27 Jan 25

South Australia

13 – 28 Apr, 6 – 21 Jul, 28 Sep – 13 Oct, 14 Dec 24 – 27 Jan 25

Western Australia

29 Mar – 14 Apr, 29 Jun – 14 Jul, 21 Sep – 6 Oct, 14 Dec 24 – 4 Feb 25

Northern Territory

6 – 14 Apr, 22 Jun – 15 Jul, 21 Sep – 6 Oct, 14 Dec 24 – 28 Jan 25



Northern Territory

South Australia

DISTANCES BY ROAD (KM)

PERTH													
417	ALBANY												
2240	2597	BROOME											
175	339	2394	BUNBURY										
223	332	2447	52	BUSSELTON									
717	481	2765	673	702	ESPERANCE								
1253	1653	1370	1414	1466	363	EXMOUTH							
418	819	1931	589	634	740	381	GERALDTON						
337	348	2389	364	410	1081	709	341	HYDEN					
594	802	2180	737	784	864	472	162	502	KALGOORLIE				
3213	3570	1044	3367	3420	452	92	390	730	3153	KUNUNURRA			
271	342	2495	99	49	709	1513	681	458	831	3468	MARGARET RIVER		
851	1252	1805	1021	1066	1526	709	433	1144	1300	2778	1115	MONKEY MIA	

Distances should be used as a guide only.

TEMPERATURE & RAINFALL

Perth	J	F	M	A	M	J	J	A	S	O	N	D
Temperature (max °C)	30	31	29	25	22	19	18	18	20	22	25	28
Average rainfall (mm)	7	16	15	44	111	175	169	114	71	51	23	11
Broome	J	F	M	A	M	J	J	A	S	O	N	D
Temperature (max °C)	33	33	34	34	31	29	28	30	31	32	33	34
Average rainfall (mm)	183	177	99	25	27	19	6	2	1	1	9	62

EXPERIENCES YOU'LL LOVE

The best part of any journey is the experiences you have along the way, leaving you with memories to relive long after the holiday is over.

Western Australia has countless amazing things to see and do. Here are some of our favourites to inspire your wanderlust.



SAY HI TO A QUOKKA

Blessed with picturesque scenery, dazzling marine life and some of the best beaches in the world, Rottnest Island is just a short ferry ride from Perth but a world away from city life. With 63 stunning beaches and 20 delightful bays to choose from, you're sure to find the perfect spot for a refreshing swim. Hire a bike and cycle around the island, join a guided walking tour or grab some snorkelling gear and discover the underwater snorkel trails. Whatever you do, join the likes of Roger Federer and Margot Robbie and get a selfie with the cutest inhabitant of Rottnest Island – the Quokka!



Courtesy of Tourism Western Australia

SWIM WITH A WHALE SHARK

Western Australia is big on incredible animal encounters. Swimming with the gentle Whale sharks as they play in the waters off the Coral Coast between March and August, is an experience not to be missed. Watch in awe as these magnificent ocean behemoths, reaching lengths of 12 metres or more, glide gracefully past your boat oblivious to life above the water. Marvel at the size of the biggest fish in the world as you swim alongside them in the pristine waters of the Ningaloo Marine Park. Fortunately for land-dwellers, their favourite meal is plankton.

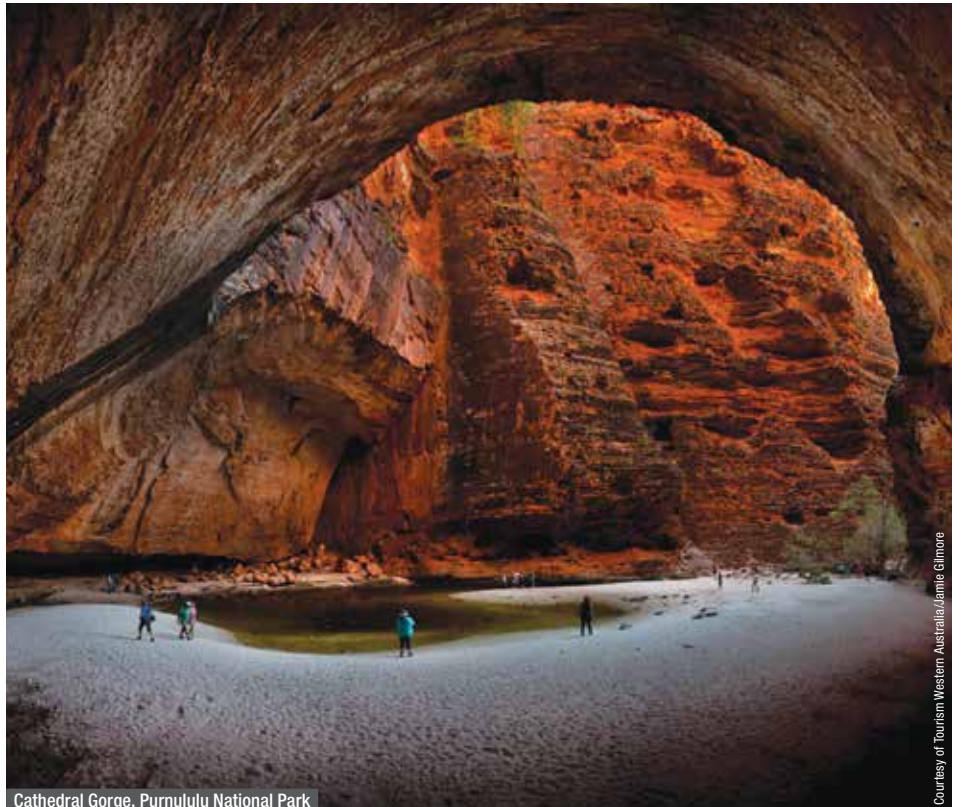
Swim alongside the gentle giants of the sea as they cruise the waters of Ningaloo Marine Park



Piccaninny Creek, Purnululu National Park

TAKE FLIGHT OVER PURNULULU NATIONAL PARK

The majestic orange and black striped beehive domes – the Bungle Bungle Range – are one of Australia's most unusual and fascinating landforms. Due to the park's remoteness and huge scale, there are areas that have not been seen by the human eye for thousands of years. For the best views over the national park, opt for a plane or helicopter flight. If you are feeling adventurous, hike into the range and explore Echidna Chasm, Cathedral Gorge and Piccaninny Creek.



Cathedral Gorge, Purnululu National Park

Courtesy of Tourism Western Australia/Jamie Gilmore



Courtesy of Tourism Western Australia

WINE O'CLOCK

Wine lovers rejoice! From Riesling to Chardonnay, to Pinot Noir and Shiraz – Western Australia is not short of a drop. There are eight wine regions from which to choose, all guaranteed to please the palate. Visit world-renowned Margaret River in the south-west with over 200 vineyards. Swan Valley, the state's oldest wine region is less than a half hour drive from Perth. Cellar door hop and sample award-winning wines along with local gourmet delights. If wine doesn't tempt your taste buds, there are an array of great local breweries and distilleries offering craft beer and spirits.



Leeuwin Estate, Margaret River

BLOOMING WILDFLOWERS

With more than 12,000 species, over 60% of which are found nowhere else on Earth, Western Australia's wildflowers colour the landscape from the coast to the forest and from the city to the outback. In June and July, the north of the state is covered with vibrant blooms. By October and November, it has moved south through Perth and into the south-west. Take in the splendour of each region and season on the many wildflower scenic drives and walking trails. Enjoy nature's spectacle in Kings Park Botanic Garden in Perth or head to Kensington Bushland to see over 150 species in bloom.



EXPLORE THE PINNACLES

Explore one of Australia's most intriguing landscapes in Nambung National Park, around 200 kilometres north-west of Perth. The Pinnacles Desert showcases a lunar-like landscape consisting of thousands of tall limestone spires, shaped over millions of years by the forces of water and wind, rising eerily out of the yellow desert sands. Walk across the moonscape-like surface and you'll feel like you've been transported to another world. For a bird's-eye perspective, make your way to the Pinnacles Lookout, where you will be able to view the little Painted Desert and the unusual white dunes.



The Pinnacles

Courtesy of Tourism Western Australia

SELF DRIVE HOLIDAYS

There's no better way to discover Western Australia than on a self drive holiday. Travelling by road is one of the best ways to explore and our selection of hand-crafted itineraries will take you to the must-see locations. Each itinerary incorporates accommodation and car hire.

We have selected some favourites from the range of flexible self drive itinerary options available. Itineraries can be tailored to suit your individual needs and requirements by including extra nights, alternative vehicle types, accommodation upgrades, as well as local tours and cruises.

To create your own dream road trip, simply contact us and we will craft a personalised self drive holiday to suit you.

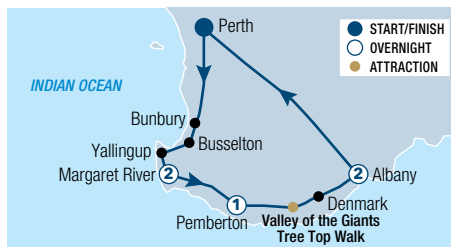


Great Northern Highway, East Kimberley

Courtesy of Tourism Western Australia



Valley of the Giants Tree Top Walk



SOUTH WEST HIGHLIGHTS 6 DAYS

Day 1: Perth to Margaret River – 280km

Collect your rental vehicle and travel to the Margaret River region via Bunbury, home of the Koombana Bay dolphins, and Busselton, famous for having the longest timber jetty in the Southern Hemisphere. Spend the next two nights at Margarets Beach Resort.

Day 2: Margaret River

Explore the wineries and beaches and sample the gourmet delights of the Margaret River region.

Day 3: Margaret River to Pemberton – 176km

Drive along one of the state's most scenic routes – Caves Road to Pemberton. Stop to see Cape Leeuwin Lighthouse, then make your way through tall timber country. Overnight at RAC Karri Valley Resort.

Day 4: Pemberton to Albany – 249km

Visit the timber and art galleries in Pemberton before heading to Albany. Visit the Giant Tingle Tree and take a stroll along the Valley of the Giants Tree Top Walk (extra charge). Spend the next two nights at Quality Apartments Banksia Albany.

Day 5: Albany

Discover Albany, with a scenic walk along the magnificent coastline or visit the Historic Whaling Station.

Day 6: Albany to Perth – 420km

Return to Perth via Stirling National Park or Kojonup and return your rental vehicle.

From **\$856*** per person twin share

6 DAYS | PERTH TO PERTH

TRAVEL TYPE: Self drive

DEPARTS: Mon, Tue, Fri, Sat and Sun

HIGHLIGHTS

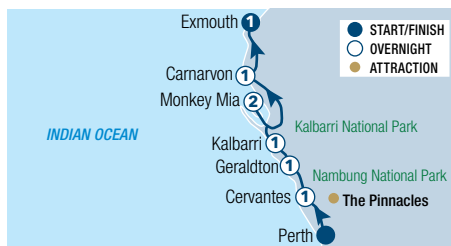
- Discover beautiful Margaret River wineries and art galleries
- Ride the Pemberton Tramway through the Karri forest
- Look out for whales passing along the Albany coast from June to October
- Visit the Valley of the Giants Tree Top Walk

INCLUDES

- 5 nights accommodation
- 6 days Group C car rental with Budget



The Pinnacles, Nambung National Park



WEST COAST EXPRESS 8 DAYS

Day 1: Perth to Cervantes – 200km

Collect your rental vehicle and travel to Cervantes and the Nambung National Park to explore the rock formations. Overnight at Cervantes Pinnacles Motel.

Day 2: Cervantes to Geraldton – 223km

Travel to Geraldton via Greenough. These areas are noted for the beautiful seasonal wildflowers (Aug – Sep). Overnight at Nesuto Geraldton Apartment Hotel.

Day 3: Geraldton to Kalbarri – 156km

Travel along the North West Coastal Highway to Kalbarri. Overnight at Kalbarri Edge Resort.

Days 4-5: Kalbarri to Monkey Mia[^] – 390km

Continue to Shark Bay and Monkey Mia. Spend the next two nights at RAC Monkey Mia Dolphin Resort.

Day 6: Monkey Mia to Carnarvon – 340km (CB)

Depart Shark Bay and travel north along the coast to Carnarvon. Overnight at Hospitality Carnarvon, SureStay Collection by Best Western.

Day 7: Carnarvon to Exmouth – 363km

From Carnarvon, continue towards Coral Bay. Drive through Coral Bay to Exmouth. Overnight at Potshot Hotel Resort.

Day 8: Exmouth

Enjoy Ningaloo Marine Park before returning your rental vehicle.

(CB = continental breakfast)

From **\$1749^{**}** per person twin share

8 DAYS | PERTH TO EXMOUTH

TRAVEL TYPE: Self drive

DEPARTS: Daily

HIGHLIGHTS

- Explore the rock formations of the Pinnacles
- See spectacular gorges in Kalbarri National Park
- Marvel at the dolphins of Monkey Mia
- Swim in the clear waters of Shark Bay
- Visit beautiful Ningaloo Reef and Marine Park

INCLUDES

- 7 nights accommodation • Meals as specified
- 8 days Group C car rental with Budget
- One way rental fee of \$1,100 and Learmonth Airport drop off fee of \$77, payable direct to Budget when collecting vehicle

[^] A Monkey Mia Conservation Park Pass is required to enter the Park and is not included in the package price. Refer to Travel Tips on page 7 for information on park fees and how to purchase passes.



Bell Gorge



KIMBERLEY GORGES 4 DAYS

Day 1: Broome via Derby to Bell Gorge Wilderness Lodge – 450km (D)

Collect your rental vehicle from Broome and drive to Derby, visiting the Boab Prison Tree before beginning your adventure on the Gibb River Road. The destination is Bell Gorge Wilderness Lodge overlooking the King Leopold Escarpment. Spend the next two nights at Bell Gorge Wilderness Lodge.

Day 2: Bell Gorge and Galvans Gorge (BD)

Explore some of the Kimberley's most scenic gorges. Enjoy hiking and swimming beneath the waterfall in Bell Gorge, see rock art in Galvans Gorge or swim at Barnett River Gorge.

Day 3: Bell Gorge via Windjana Gorge and Tunnel Creek to Fitzroy Crossing – 273km (B)

Head to Windjana Gorge National Park with its 300 metre high cliffs, white sand and Freshwater crocodiles. Travel to Tunnel Creek and wade through the 750 metre long tunnel. Overnight at Fitzroy River Lodge.

Day 4: Fitzroy Crossing to Broome – 395km

Discover Geikie Gorge National Park with a ranger or an Indigenous guided cruise through the gorge (extra charge). Continue to Broome and return your rental vehicle.

(B = breakfast, D = dinner)

From **\$1309**^{**^} per person twin share

4 DAYS | BROOME TO BROOME

TRAVEL TYPE: Self drive

DEPARTS: Daily (May – Sep)

HIGHLIGHTS

- Visit the Boab Prison Tree in Derby
- View the impressive King Leopold Escarpment
- Swim at Bell and Barnett Gorges
- Discover Windjana Gorge National Park

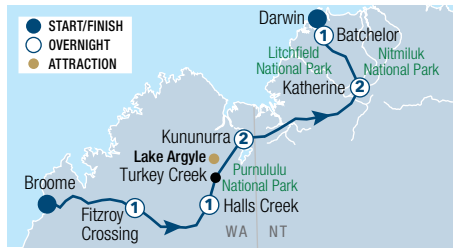
INCLUDES

- 3 nights accommodation
- Meals as specified
- 4 days Group W car rental with Budget

[^]Park permits and vehicle fees apply for National Park entry and are not included in the package price, unless otherwise specified. Refer to Travel Tips on page 7 for information on National Park fees and how to purchase passes.



Kununurra



GREAT NORTHERN ADVENTURE 8 DAYS

Day 1: Broome to Fitzroy Crossing – 396km

Collect your rental vehicle from Broome and drive to Fitzroy Crossing. Overnight at Fitzroy River Lodge.

Day 2: Fitzroy Crossing to Halls Creek – 290km

Drive to Halls Creek, the access point for a number of natural attractions. Overnight at Kimberley Hotel.

Day 3: Kimberley to Kununurra – 359km

Travel via Turkey Creek to Kununurra. Spend the next two nights at Discovery Parks Lake Kununurra.

Day 4: Kununurra

Take an Ord River cruise and marvel at the spectacular scenery and wildlife (extra charge).

Day 5: Kununurra to Katherine – 515km

Depart Kununurra and drive across the state border. Spend the next two nights at Contour Hotel Katherine.

Day 6: Katherine

Enjoy a cruise through beautiful Katherine (Nitmiluk) Gorge (extra charge) and explore the town of Mataranka.

Day 7: Katherine to Litchfield National Park – 238km

Travel north to Batchelor and into Litchfield National Park. Overnight at Litchfield Outback Resort.

Day 8: Litchfield National Park to Darwin – 99km

Continue to Darwin and return your rental vehicle.

From **\$2197**^{*} per person twin share

8 DAYS | BROOME TO DARWIN

TRAVEL TYPE: Self drive

DEPARTS: Daily (May – Sep)

HIGHLIGHTS

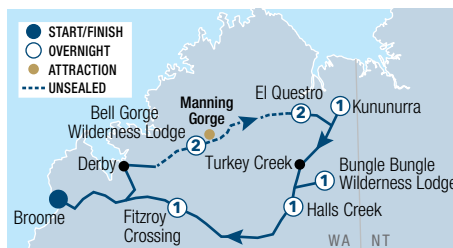
- Visit Fitzroy Crossing
- See the China Wall and Caroline's Pool, Halls Creek
- Explore the township of Kununurra
- Cruise along the Ord River
- Take in the beauty of Katherine Gorge

INCLUDES

- 7 nights accommodation
- 8 days Group W car rental with Budget
- One way rental fee of \$1,100, payable direct to Budget when collecting vehicle



Purnululu National Park



GIBB RIVER ROAD 4WD EXPERIENCE 9 DAYS

Day 1: Broome to Bell Gorge Wilderness Lodge – 437km (D)

Collect your rental vehicle from Broome and drive to Bell Gorge Wilderness Lodge for a two night stay.

Day 2: Bell Gorge Wilderness Lodge (BLD)

Explore Bell Gorge and Galvans Gorge.

Day 3: Bell Gorge Wilderness Lodge to El Questro – 403km (B)

Drive to El Questro. Spend the next two nights at El Questro – Emma Gorge.

Day 4: El Questro – Emma Gorge (B)

Relax and explore El Questro.

Day 5: El Questro to Kununurra – 80km (B)

Drive to Kununurra. Overnight at Kununurra Country Club.

Day 6: Kununurra to Purnululu National Park – 361km (D)

Continue to the safari camp within Purnululu National Park. Overnight at Bungle Bungle Wilderness Lodge.

Day 7: Purnululu National Park to Halls Creek – 188km (B)

Early start to visit Echidna Chasm before travelling to Halls Creek. Overnight at Kimberley Hotel.

Day 8: Halls Creek to Fitzroy Crossing – 290km

Continue along the highway to Fitzroy Crossing. Overnight at Fitzroy River Lodge.

Day 9: Fitzroy Crossing to Broome – 396km

Drive to Broome and return your rental vehicle.

(B = breakfast, D = dinner)

From **\$3030**^{**^} per person twin share

9 DAYS | BROOME TO BROOME

TRAVEL TYPE: Self drive

DEPARTS: Daily (May – Sep)

HIGHLIGHTS

- Explore Bell Gorge, Galvans Gorge and Barnett Gorge
- Discover Zebedee Springs, Champagne Falls and Chamberlain Gorge
- Walk up to Kelly's Knob Lookout, Kununurra
- Marvel at Echidna Chasm in Purnululu National Park

INCLUDES

- 8 nights accommodation
- Meals as specified
- El Questro Visitor Permit
- 9 days Group W car rental with Budget

[^]Park permits and vehicle fees apply for National Park entry and are not included in the package price, unless otherwise specified. Refer to Travel Tips on page 7 for information on National Park fees and how to purchase passes.

CAR HIRE



AVIS

Why not add Avis to your travel plans and make the most of your holiday by enjoying the flexibility and convenience that an Avis car rental provides.

Situated at all major airports and city locations and offering a wide range of late model vehicles to choose from, all at great rates, renting with Avis is sure to make your holiday escape more enjoyable. All Avis vehicles are air-conditioned and come with Mechanical Breakdown Assistance. Plus you get unlimited kilometres in Metropolitan and Country areas as well as free maps to help you find your destination.

Includes:

- Loss Damage Waiver • Administration Fee
- Vehicle Registration Fee • GST
- Concession Recovery Fee/Premium Location Surcharge
- Excess Reduction (Zero Excess option), at participating locations only
- All vehicles include: air-conditioning, ABS, dual airbags and CD/MP3

Car rentals commencing in Metropolitan and Country locations include unlimited kilometres. Rentals commencing in Remote locations include 100 kilometres per day with excess kilometres charged at 27.5c per kilometre.

Does Not Include:

- Excess Reduction (Basic Excess option) • Fuel
- One way rental fees • Tolls
- Products purchased at rental counter

Excess:

An Excess of \$5,445* applies to drivers of all vehicles, with the exception of Group W, which have an Excess of \$5,760*. Optional Excess Reduction can be purchased direct for an additional fee of \$42.69* per day, or \$48.46* per day for Group W. This fee reduces the Excess to \$838*, or \$1,152* for Group W. Or select the Zero Excess option to reduce the excess to zero. All prices above are inclusive of administration fee, credit card surcharge and GST, and are subject to Avis Rental Terms and Conditions.

Restricted Access:

Rentals commencing south of Exmouth may not be driven north of Exmouth unless a one way rental is approved. When rental commences from Perth, Broome or Kununurra, Group W may be driven on the Gibb River Road (Kimberley) from 1 Apr – 31 Oct 24, conditions apply. Group W only may be driven on Tunnel Creek Road, Windjana Gorge Road, Cape Leveque Road, Spring Creek Track to the Bungle Bungles and to Karijini National Park. Driving on access roads to Aboriginal communities is not permitted without an approved permit.

Based on per vehicle per day (24 hour hire period). Minimum age restrictions apply. Restrictions on vehicle hire type apply for drivers under 25 years. A full driver's licence, credit card and security bond is required on collection. Additional driver fees apply. Vehicles are subject to availability and a similar vehicle to those pictured may be substituted. Not all vehicles are available at all locations. Check with your travel agent for details.



Small Suitcase Large Suitcase

TOYOTA COROLLA (or similar)

GROUP C

- Auto
- 5 door hatch
- 4 cylinder
- USB
- Bluetooth
- Cruise control
- Reversing camera



x 5

	BASIC EXCESS			ZERO EXCESS		
	1-3 DAYS	4-6 DAYS	7+ DAYS	1-3 DAYS	4-6 DAYS	7+ DAYS
PERTH AIRPORT	\$104*	\$96*	\$89*	\$133*	\$126*	\$118*
BROOME AIRPORT	\$138*	\$131*	\$124*	\$168*	\$160*	\$153*

TOYOTA COROLLA ASCENT (or similar)

GROUP D

- Auto
- 5 door sedan
- 4 cylinder
- USB • Bluetooth
- Smart cruise control
- Reversing camera
- Smartphone connectivity



x 5

	BASIC EXCESS			ZERO EXCESS		
	1-3 DAYS	4-6 DAYS	7+ DAYS	1-3 DAYS	4-6 DAYS	7+ DAYS
PERTH AIRPORT	\$116*	\$103*	\$99*	\$145*	\$132*	\$129*
BROOME AIRPORT	\$151*	\$138*	\$134*	\$180*	\$167*	\$163*

TOYOTA CH-R (or similar)

GROUP S

- Auto
- 5 door SUV
- 4 cylinder
- USB • Bluetooth
- Smart cruise control
- Reversing camera
- Smartphone connectivity



x 5

	BASIC EXCESS			ZERO EXCESS		
	1-3 DAYS	4-6 DAYS	7+ DAYS	1-3 DAYS	4-6 DAYS	7+ DAYS
PERTH AIRPORT	\$116*	\$103*	\$99*	\$145*	\$132*	\$129*
BROOME AIRPORT	N/A	N/A	N/A	N/A	N/A	N/A

KIA SPORTAGE (or similar)

GROUP K

- Auto
- 5 door SUV
- 4 cylinder
- USB • Bluetooth
- Smart cruise control
- Reversing camera
- Smartphone connectivity



x 5

	BASIC EXCESS			ZERO EXCESS		
	1-3 DAYS	4-6 DAYS	7+ DAYS	1-3 DAYS	4-6 DAYS	7+ DAYS
PERTH AIRPORT	\$126*	\$119*	\$108*	\$156*	\$148*	\$138*
BROOME AIRPORT	\$149*	\$142*	\$131*	\$179*	\$171*	\$161*

KIA CARNIVAL (or similar)

GROUP V

- Auto
- 5 door SUV
- 4 cylinder
- USB • Bluetooth
- Smart cruise control
- Reversing camera
- Smartphone connectivity



x 8

	BASIC EXCESS			ZERO EXCESS		
	1-3 DAYS	4-6 DAYS	7+ DAYS	1-3 DAYS	4-6 DAYS	7+ DAYS
PERTH AIRPORT	\$162*	\$145*	\$139*	\$192*	\$174*	\$168*
BROOME AIRPORT	\$197*	\$180*	\$174*	\$227*	\$209*	\$203*

TOYOTA KLUGER (or similar)

GROUP H

- Auto
- 5 door SUV
- 4/6 cylinder
- USB • Bluetooth
- Smart cruise control
- Reversing camera
- Smartphone connectivity



x 5

	BASIC EXCESS			ZERO EXCESS		
	1-3 DAYS	4-6 DAYS	7+ DAYS	1-3 DAYS	4-6 DAYS	7+ DAYS
PERTH AIRPORT	\$165*	\$159*	\$150*	\$222*	\$216*	\$207*
BROOME AIRPORT	N/A	N/A	N/A	N/A	N/A	N/A

TOYOTA PRADO (or similar)

GROUP W

- Auto
- 5 door 4WD
- 4/6 cylinder
- Cruise control
- Reversing camera
- Smartphone connectivity



x 7

	BASIC EXCESS			ZERO EXCESS		
	1-3 DAYS	4-6 DAYS	7+ DAYS	1-3 DAYS	4-6 DAYS	7+ DAYS
PERTH AIRPORT	\$209*	\$187*	\$179*	\$266*	\$244*	\$236*
BROOME AIRPORT	\$220*	\$199*	\$191*	\$278*	\$256*	\$248*



BUDGET

Budget Rent a Car is renowned for meticulously maintained vehicles and quality service. Offering a wide range of cars, 4WDs and minivans Budget has the right vehicle choice for your holiday needs.

Budget's car hire fleet is constantly being updated to ensure you enjoy the best in comfort and safety in late model vehicles and at competitive prices. Driving is one of the best ways to see the sights of Australia, and Budget offers customers the convenience of having locations at airports and cities Australia wide so you are never far from a pick-up point or friendly service.

Includes:

- Loss Damage Waiver • Administration Fee
- Vehicle Registration Fee • GST
- Concession Recovery Fee/Premium Location Surcharge
- Excess Reduction (Zero Excess option), at participating locations only
- All vehicles include: air-conditioning, ABS, six airbags and CD/MP3

Car rentals commencing in Metropolitan and Country locations include unlimited kilometres. Rentals commencing in Remote locations include 100 kilometres per day with excess kilometres charged at 27.5c per kilometre.

Does Not Include:

- Excess Reduction (Basic Excess option) • Fuel
- One way rental fees • Tolls

Excess:

An Excess of \$5,445* applies to drivers of all vehicles, with the exception of Group W, which have an Excess of \$5,760*. Optional Excess Reduction can be purchased direct for an additional fee of \$42.69* per day, or \$48.46* per day for Group W. This fee reduces the Excess to \$838*, or \$1,152* for Group W. Or select the Zero Excess option to reduce the excess to zero. All prices above are inclusive of administration fee, credit card surcharge and GST, and are subject to Budget Rental Terms and Conditions.

Restricted Access:

Rentals commencing south of Exmouth may not be driven north of Exmouth unless a one way rental is approved. When rental commences from Perth, Broome or Kununurra, Group W may be driven on the Gibb River Road (Kimberley) from 1 Apr – 31 Oct 24, conditions apply. Group W only may be driven on Tunnel Creek Road, Windjana Gorge Road, Cape Leveque Road, Spring Creek Track to the Bungle Bungles and to Karijini National Park. Driving on access roads to Aboriginal communities is not permitted without an approved permit.

Based on per vehicle per day (24 hour hire period). Minimum age restrictions apply. Restrictions on vehicle hire type apply for drivers under 25 years. A full driver's licence, credit card and security bond is required on collection. Additional driver fees apply. Vehicles are subject to availability and a similar vehicle to those pictured may be substituted. Not all vehicles are available at all locations. Check with your travel agent for details.



Small Suitcase Large Suitcase

KIA CERATO S HATCH (or similar)

GROUP C

- Auto
- 5 door hatch
- 4 cylinder
- USB • Bluetooth
- Cruise control
- Reversing camera or sensors



x 5

PERTH AIRPORT

BROOME AIRPORT

BASIC EXCESS

1-3 DAYS

4-6 DAYS

7+ DAYS

ZERO EXCESS

1-3 DAYS

4-6 DAYS

7+ DAYS

\$90*

\$83*

\$77*

\$113*

\$106*

\$100*

\$122*

\$116*

\$110*

\$145*

\$139*

\$132*

KIA CERATO SEDAN (or similar)

GROUP D

- Auto
- 4 door sedan
- 4 cylinder
- USB
- Bluetooth
- Cruise control
- Reversing camera or sensors



x 5

PERTH AIRPORT

BROOME AIRPORT

BASIC EXCESS

1-3 DAYS

4-6 DAYS

7+ DAYS

ZERO EXCESS

1-3 DAYS

4-6 DAYS

7+ DAYS

\$100*

\$89*

\$86*

\$123*

\$112*

\$109*

\$133*

\$122*

\$119*

\$156*

\$145*

\$141*

KIA STONIC (or similar)

GROUP S

- Auto
- 5 door SUV
- 4 cylinder
- USB
- Bluetooth
- Smart cruise control
- Smartphone connectivity



x 5

PERTH AIRPORT

BROOME AIRPORT

BASIC EXCESS

1-3 DAYS

4-6 DAYS

7+ DAYS

ZERO EXCESS

1-3 DAYS

4-6 DAYS

7+ DAYS

\$100*

\$89*

\$86*

\$123*

\$112*

\$109*

N/A

N/A

N/A

N/A

N/A

N/A

KIA SPORTAGE (or similar)

GROUP K

- Auto • 5 door SUV
- 4 cylinder
- USB • Bluetooth
- Smart cruise control
- Reversing camera or sensors
- Smartphone connectivity



x 5

PERTH AIRPORT

BROOME AIRPORT

BASIC EXCESS

1-3 DAYS

4-6 DAYS

7+ DAYS

ZERO EXCESS

1-3 DAYS

4-6 DAYS

7+ DAYS

\$113*

\$107*

\$97*

\$136*

\$129*

\$120*

\$134*

\$128*

\$119*

\$157*

\$151*

\$141*

HYUNDAI STARIA (or similar)

GROUP V

- Auto
- 5 door van
- 4/6 cylinder
- USB
- Bluetooth
- Cruise control
- Reversing camera or sensors



x 8

PERTH AIRPORT

BROOME AIRPORT

BASIC EXCESS

1-3 DAYS

4-6 DAYS

7+ DAYS

ZERO EXCESS

1-3 DAYS

4-6 DAYS

7+ DAYS

\$139*

\$124*

\$119*

\$162*

\$147*

\$142*

\$172*

\$157*

\$152*

\$195*

\$180*

\$175*

TOYOTA KLUGER (or similar)

GROUP H

- Auto
- 5 door SUV
- 4/6 cylinder
- USB
- Bluetooth
- Reversing camera or sensors



x 5

PERTH AIRPORT

BROOME AIRPORT

BASIC EXCESS

1-3 DAYS

4-6 DAYS

7+ DAYS

ZERO EXCESS

1-3 DAYS

4-6 DAYS

7+ DAYS

\$144*

\$139*

\$131*

\$197*

\$192*

\$184*

N/A

N/A

N/A

N/A

N/A

N/A

TOYOTA PRADO (or similar)

GROUP W

- Auto
- 5 door 4WD
- 4/6 cylinder
- USB
- Bluetooth



x 7

PERTH AIRPORT

BROOME AIRPORT

BASIC EXCESS

1-3 DAYS

4-6 DAYS

7+ DAYS

ZERO EXCESS

1-3 DAYS

4-6 DAYS

7+ DAYS

\$179*

\$161*

\$154*

\$233*

\$214*

\$207*

\$190*

\$172*

\$165*

\$243*

\$225*

\$218*

CAMPERVAN AND MOTORHOME HIRE



APOLLO & BRITZ

Through our RV rental partner *thl*, two established brands are available to customers.

Proudly Australian owned, Apollo has been helping people create fun road trip memories for more than 35 years. Relax in your 'home away from home' and explore the wonders of Australia at your own pace with an Apollo camper. With a wide range of motorhomes or campervans to choose from, you can be assured of a high-quality vehicle every time. Try a self-contained campervan with cooking facilities, air-conditioning and beds for up to six people, a compact camper for an authentic van-life experience or even a rugged 4WD camper designed for adventure-seekers. With 10 branches Australia-wide, including depots in Perth and Broome, you can holiday your way with Apollo.

Britz Australia is perfect for a family getaway, an adventure with mates or a couple's escape. With plenty of space for the grown-ups, the young ones and even the dog, the fully equipped 2WD and 4WD campervans have everything you need for unscripted holiday experiences. Your unforgettable holidays starts when you hire a Britz campervan.

Includes:

- Unlimited kilometres (except 4WDs)
- 300 kilometres per day (4WDs)
- Administration fee • 24/7 on road assistance
- Outback safety kit (4WDs only) • Linen and bedding
- Kitchen kit (cutlery, crockery etc)
- General equipment (broom, dust pan etc)

Does Not Include:

- One way fees • Fuel • Liability Reduction option
- Security deposit • Location fees

Value Packs:

The Apollo Value Pack and the Britz Value Pack are designed to provide maximum liability cover.

Apollo Value Pack and Britz Value Pack for 2WD: Nil liability, single vehicle rollover cover, unlimited windscreen and tyre cover, undercarriage/overhead damage, fan/heater, toilet chemicals where required, camping chairs and table, child/booster seat with prior request and linen exchange.

Additional cover is available for all Apollo and Britz 4WD: Nil liability, accidental damage, unlimited windscreen and tyre cover, unlimited kilometres, towing and recovery costs, and awning damage.

Minimum age for drivers is 21 years. Minimum rental periods apply. All hires are subject to 2024/25 rental rates and terms and conditions. Driving area restrictions apply. 2WD campervans can only be driven on sealed roads. Self check-in is required for all hires minimum 14 days in advance.

\$115 surcharge applies when picking-up or dropping-off on public holidays. Alice Springs and Darwin branches are closed 1 Dec 24 – 31 Mar 25.



The **thl Roadtrip App** is a must for all Apollo and Britz customers. Download it from Google Play or the App Store before you go.

The App has everything you need to know about a campervan holiday. It features a show-through video of the camper for you to watch before you arrive. There is also a bunch of helpful 'how to' videos to help you operate features of the camper while you're on the road. Search for and book campsites and activities directly in the app as well as find your closest supermarket, dump station, petrol stations and more. There is also a link to the online self check-in to complete before you arrive.



APOLLO EURO MINI

👤 x2

- Automatic transmission
- Air-conditioned driver's and main cabin
- Gas cooker
- Microwave
- Shower and toilet
- Refrigerator with freezer compartment
- Dining table converts to bed



APOLLO EURO TOURER

👤 x2

- Automatic transmission
- Air-conditioned driver's and main cabin
- Shower and toilet
- Gas cooker • Microwave
- Double bed • LCD screen/DVD
- For two adults and a child, choose the Apollo Euro Plus that features an additional single bed



APOLLO EURO QUEST

👤 x4

- Automatic transmission
- Air-conditioned driver's and main cabin
- Gas cooker
- Microwave
- Awning
- Two double beds
- Refrigerator



APOLLO EURO DELUXE

👤 x6

- Automatic transmission
- Air-conditioned driver's and main cabin
- Three double beds
- Gas cooker • Awning
- Microwave • Refrigerator
- Shower and toilet • LCD screen/DVD
- Reversing camera



BRITZ 4WD MAVERICK

👤 x2

- Automatic transmission
- Air-conditioned driver's cabin
- 80L fuel capacity + 2 additional 20L jerry cans
- External kitchen with gas cooker and 80L fridge with freezer
- Awning
- Dual batteries



BRITZ VOYAGER

👤 x2 👤 x2

- 2 adults and 2 children
- Automatic transmission
- Air-conditioned driver's cabin
- Gas cooker
- Microwave
- Two double beds
- Refrigerator



BRITZ SAFARI 4WD

👤 x5

- Automatic transmission
- Air-conditioned driver's cab
- Sleeping mats • Awning
- Rooftop tent with attachable ground annex tent
- Picnic table and chairs
- Portable gas cooker
- Slide-out fridge • Bluetooth



BRITZ 4WD OUTBACK

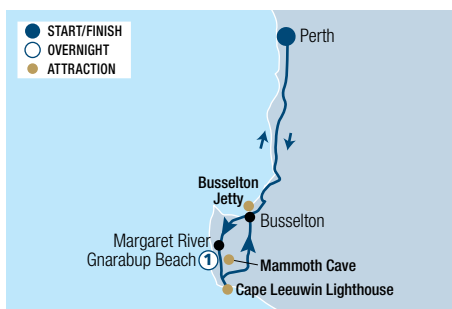
👤 x5

- Automatic transmission
- Air-conditioned driver's cabin
- Freestanding tent • Awning
- Self-inflating sleeping mats
- Picnic table and chairs
- Portable gas cooker
- Slide-out fridge • Radio/Bluetooth

Ask your travel agent for the best price available.



Busselton Jetty



MARGARET RIVER GETAWAY FOR FOOD LOVERS 2 DAYS

Day 1: Perth to Margaret River (LD) Travel south by coach driving through grazing farmland and passing by coastal towns. Arrive at Busselton to view the iconic Busselton Jetty, the longest timber jetty in the Southern Hemisphere. Travel to one of Margaret River's boutique breweries for a gourmet platter lunch of local produce, with complimentary beer and wine tastings. After lunch, visit Mammoth Cave for a guided tour through this gothic cave. Travel through Boranup Forest before reaching Augusta. Here at Cape Leeuwin Lighthouse, marvel at the dividing point between the Southern and

Indian Oceans. Stroll through Margaret River township before checking into your accommodation. Overnight at Abbey Beach Resort, Busselton.

Day 2: Margaret River to Perth (BL) Enjoy a leisurely breakfast, then join your Food Lovers Tour. Delight in a unique gastronomic journey, sampling produce from the various food and wine artisans of the region. Return to Perth in the evening, where your tour concludes.

(B = breakfast, L = lunch, D = dinner)

From **\$845*** per person twin share

2 DAYS | PERTH TO PERTH

OPERATOR: Australian Pinnacle Tours

TRAVEL TYPE: Escorted coach

DEPARTS: Mon, Thu, Fri

HIGHLIGHTS

- Be amazed by Mammoth Caves
- View the iconic Busselton Jetty
- Sample produce from the region's food and wine artisans

INCLUDES

- 1 night 4 star accommodation
- Meals as specified • Wine and beer tastings
- Margaret River Food Lovers tour
- Mammoth Cave guided tour
- Experienced guide and commentary
- Return transfers from selected Perth hotels

Sole use, triple share and child prices and other accommodation options are available. BONUS: Book this tour and receive a Half Day Perth & Fremantle City Explorer tour.



MARGARET RIVER YOGA RETREAT 3 DAYS

Day 1: Perth to Margaret River (LD) Leave the city behind for three days of bliss. Stop at quirky Crooked Carrot Café and Farm in Myalup for morning tea, then a picnic lunch and yoga class at Meelup Beach. Indulge at Gabriel's Chocolate, then head to Fair Harvest for a cooking class using organic produce from the garden.

take part in a gentle yin yoga session. Tonight's dinner will be prepared by your guide at camp.

Day 3: Margaret River to Perth (BL) This morning, balance yourself during a yoga and sound meditation session. Visit a biodynamic winery for a tour and tasting to learn why this natural way of wine production is becoming so popular. Enjoy a relaxing lunch of regional produce before stopping at Origin Markets. Return to Perth, where your retreat concludes.

(B = breakfast, L = lunch, D = dinner)

Day 2: Margaret River (BLD) Today, visit the eclectic Margaret River Markets to collect local fresh produce. Next up is the Cape to Cape Track for a half-day hiking experience led by a local holistic healer. After a beach picnic and swim, return for an afternoon of relaxation or

From **\$1635*** per person twin share

3 DAYS | PERTH TO PERTH

OPERATOR: Untamed Escapes

TRAVEL TYPE: Small group

DEPARTS: 4, 25 Oct, 15 Nov, 6 Dec 24; 7, 28 Feb, 21 Mar 25

HIGHLIGHTS

- Yoga and sound meditation sessions
- Hike along the Cape to Cape Track
- Taste Margaret River wine and produce

INCLUDES

- 2 nights Bell Tent glamping accommodation
- Meals as specified
- Expert guide and qualified yoga teacher
- All activities, experiences and workshops
- Transport by air-conditioned coach
- Return transfers from Perth

Sole use and triple share prices also available. Not suitable for children under 16 years.



Boranup Forest, Pemberton



ALBANY, TREE TOP WALK & MARGARET RIVER 4 DAYS

Day 1: Perth to Albany (LD) Depart Perth by coach, heading south towards Albany. Take in the Stirling Ranges, Porongorups and stop for lunch and wine tasting. Overnight at Dog Rock Hotel Albany or similar.

Day 3: Pemberton to Busselton (BLD) Travel north through the Boranup Forest and onto Augusta. Visit Cape Leeuwin Lighthouse and Mammoth Cave before continuing to Margaret River and Busselton Jetty. Overnight at Abbey Beach Resort or similar.

Day 2: Albany to Pemberton (BLD) Visit The Gap and National Bridge before heading to the famous Whaleworld Interpretation Centre. Travel west to Walpole for a lunch cruise on the Nornalup Inlet. Next stop is the Valley of the Giants Tree Top Walk. Travel north-west to the Pemberton region. Overnight at RAC Karri Valley Resort Pemberton or similar.

Day 4: Busselton to Perth (BL) Visit the quaint town of Cowaramup, famous for its cow statues. Sample gourmet produce before lunch including cider and beer tasting at a local brewery. Visit Canal Rocks before returning to Perth in the evening.

(B = breakfast, L = lunch, D = dinner)

From **\$1499*** per person twin share

4 DAYS | PERTH TO PERTH

OPERATOR: Australian Pinnacle Tours

TRAVEL TYPE: Escorted coach

DEPARTS: 15 Apr, 6, 20 May, 2, 16, 30 Sep, 7, 14, 21 Oct, 4, 18 Nov 24; 3, 17 Feb, 17, 31 Mar 25

HIGHLIGHTS

- Visit the ANZAC Centre & Whaleworld in Albany
- Stroll along Busselton Jetty
- Enjoy wine tastings in Margaret River

INCLUDES

- 3 nights 3½ to 4 star accommodation
- Meals as specified • Admission fees
- Nornalup Inlet lunch cruise
- Expert guide and commentary
- Return transfers from selected Perth hotels

Sole use, triple share and child prices are available. BONUS: Book this tour and receive a Half Day Perth & Fremantle City Explorer tour.



MARGARET RIVER & ESPERANCE ADVENTURE 6 DAYS

Day 1: Perth to Margaret River (LD)

Walk along the iconic Busselton Jetty and visit the Ngilgi Cave Ancient Lands, an immersive above and below-ground experience. Pop into a couple of cellar doors for tastings in Margaret River. Camp tonight at Big Valley Caravan Park.

Day 2: Margaret River to Walpole (BD)

Today, walk one of the most scenic sections of the Cape to Cape Track. Enjoy a swim before exploring Margaret River township. Climb the Bicentennial Tree in the Walpole Wilderness region. Camp tonight at Peaceful Bay Caravan Park.

Day 3: Walpole to Mt Trio (BLD)

After breakfast, head to William Bay National Park and a swim at Greens Pool. Travel along a scenic stretch of coastline to Albany, where years of natural erosion have crafted incredible rock sculptures and granite bluffs at the Natural Bridge and The Gap. Travel onwards to the Porongorups, which rise from the landscape like an island. Walk through tall Karri and Marri tree forest and take in the jaw-dropping view from the suspended Granite Skywalk. A drive through the picturesque

Stirling Ranges delivers you to tonight's private camp site at Mt Trio.

Day 4: Mt Trio to Cape Le Grand National Park (BD)

Travel to Cape Le Grand National Park via Twilight Beach. Connect to country during the Dabungool Cultural Experience. Camp for the next two nights at Lucky Bay.

Day 5: Cape Le Grand National Park (BLD)

Wander onto the beach to say hello to friendly western grey kangaroos, then spend the day exploring this incredible national park. Choose from several hikes or relax on the beach. This afternoon, climb Frenchman Peak to watch the sunset.

Day 6: Esperance to Perth (BL)

An early start this morning for the drive to the 2,700-million-year-old Wave Rock. Next, head to the historic town of York, the first inland settlement for early colonists. Your tour concludes on arrival in Perth around 6:30pm.

(B = breakfast, L = lunch, D = dinner)

From **\$1495*** per person



6 DAYS | PERTH TO PERTH

OPERATOR: Untamed Escapes

TRAVEL TYPE: Small group camping

DEPARTS: 1, 15 Apr, 16, 30 Sep, 14, 28 Oct, 4, 11, 18, 25 Nov, 2, 9, 16, 23, 30 Dec 24; 6, 13, 20, 27 Jan, 3, 10, 17, 24 Feb, 3, 10, 17, 24, 31 Mar 25

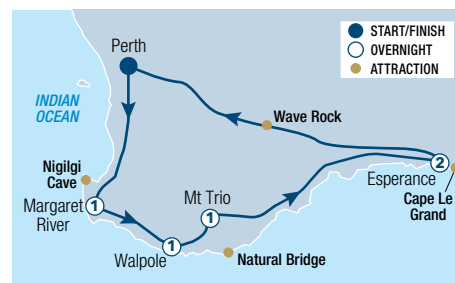
HIGHLIGHTS

- Cape to Cape Track
- Tastings in Margaret River
- Ancient forests of the Walpole region
- Cape Le Grand National Park • Wave Rock

INCLUDES

- 5 nights swag camping accommodation with basic facilities
- Meals as specified • All activities
- National Park and entry fees • Expert guide
- Transport by air-conditioned vehicle
- Return transfers from Perth

Child price also available. Ask your travel agent for details.



CAPE TO CAPE TRACK GUIDED WALKING TOUR 8 DAYS

Day 1: Perth to Dunsborough (LD)

Depart by coach from Perth, reaching Cape Naturaliste by lunch. After a clifftop and beach walk, continue to Dunsborough. Walking distance: 14 kilometres.

Day 2: Yallingup to Moses Rock (BLD)

Start the morning with a beach walk and superb coastal views all day. Enjoy lunch at Injidup, visit Quinninup Falls and finish with ocean views at Moses Rock. Walking distance: 18 kilometres (or 10km option).

Day 3: Moses Rock to Gracetown (BL)

Sweeping views of the coast from the clifftops and the towering red rocks of Wilyabrup are two of many highlights. Enjoy a swim in the sheltered bay at Gracetown. Walking distance: 16 kilometres.

Day 4: Gracetown to Margaret River (BL)

Today is easy walking among coastal heath to Ellensbrook historic homestead. After lunch, walk to Cape Mentelle, finishing the day at the Margaret River mouth. Walking distance: 20 kilometres (or 12km option).

Day 5: Margaret River to Boranup Forest (BL)

Head inland for morning tea beside the Boodjidup Brook. Walk along the beach to Redgate for lunch and then along a spectacular stretch of clifftop to Contos Campground. Walking distance: 24 kilometres (or 14km option).

Day 6: Boranup Forest to Cosy Corner (BLD)

Walk through the Karri forest then down to Hamelin Bay for a picnic lunch. Hike up to the tiny Foul Bay Lighthouse. Walking distance: 20 kilometres (or 14km option).

Day 7: Cosy Corner to Leeuwin (BLD)

Enjoy a long beach walk before heading inland, sighting the Cape Leeuwin Lighthouse. The journey finishes at the Cape Leeuwin waterwheel but if time permits, you can visit the lighthouse. Walking distance: 21 kilometres.

Day 8: Margaret River to Perth (B)

Enjoy free time in Margaret River before heading back to Perth, arriving mid afternoon where your tour concludes.

(B = breakfast, L = lunch, D = dinner)

From **\$2799*** per person twin share



8 DAYS | PERTH TO PERTH

OPERATOR: Inspiration Outdoors

TRAVEL TYPE: Guided walk

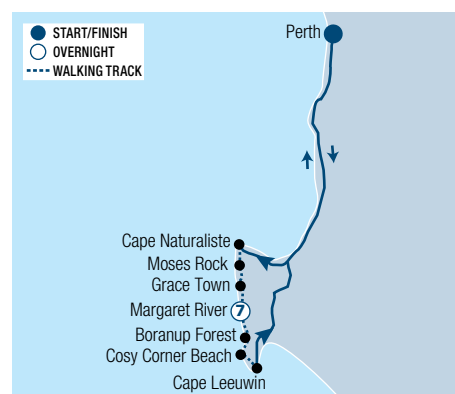
DEPARTS: Apr, Sep, Oct, Nov 24; Mar 25

HIGHLIGHTS

- Walk 125 kilometres between Cape Naturaliste and Cape Leeuwin
- Stay in the lovely township of Margaret River
- See colourful wildflowers on Spring tours (Sep - Nov)
- Historically rich area • Small group size

INCLUDES

- 7 nights accommodation • Meals as specified
- Expert guide and commentary
- Transfers to/from the track each day
- Private coach transfers from/to Perth



* FROM PRICES ARE A GUIDE ONLY, subject to change and availability and are in Australian Dollars. Prices are per person twin share, unless otherwise specified and based on the lowest room category and travel in low season. For full terms and conditions, refer to the Booking Conditions on the inside back cover of this brochure.

ULTIMATE JOURNEYS

BY VIVA HOLIDAYS



InterContinental Perth City Centre



ULTIMATE PERTH & MARGARET RIVER GOURMET GETAWAY

7 DAYS/6 NIGHTS

Day 1: Friday – Welcome to Perth

Welcome to Perth. You'll be met on arrival at Perth Airport and transferred to your hotel. The remainder of the day is yours to enjoy. Stay the next three nights at InterContinental Perth City Centre.

Day 2: Saturday – Rottnest Island Long Lunch (BL)

Get ready for the ultimate beach escape. You will be collected from your hotel and transferred to the Swan River Seaplane Jetty at South Perth, where you'll be welcomed with a glass of sparkling wine at check-in. Experience the exhilarating feeling of a water take-off as you take to the skies and soar above the city on the 20 minute flight to Rottnest Island. On arrival, there's free time to enjoy the island and a welcome cocktail, before a delicious multi-course Chef's selection lunch at Lontara, Rottnest's premier waterfront restaurant. A glass of wine or beer is included and additional beverages may be purchased. Return to Perth late afternoon for an evening at leisure.

Day 3: Sunday – Perth (B)

Today is free to explore Perth and surrounds at your own pace. Perhaps head to nearby Kings Park or to Fremantle and check out the many craft breweries and restaurants.

Day 4: Monday – Perth to Yallingup (B, HT)

After breakfast, check-out of your hotel and collect your hire car for the drive to Margaret River. Stop at Busselton and take a walk along the longest timber-piled jetty in the Southern Hemisphere. Then check out some of the region's beautiful beaches including Bunker Bay, Smiths Beach and Injidup Beach before arriving at Cape Lodge for a three night stay.

This afternoon, enjoy the signature High Tea experience in the Lakeside Lounge at Cape Lodge. Immerse yourself in the natural surroundings and relish the sweet and savoury treats, served with a selection of infused teas and coffee.

Day 5: Tuesday – Yallingup (BD)

Today is free to explore the beautiful Margaret River region at your leisure.

Late afternoon, join the resident sommelier for an intimate wine tasting experience. Journey through the 'Cabernet' sub-region of the Margaret River and surrounds, as you sip and swirl through a curated collection of local producers, from Domaine Naturaliste, to Glenmore, Flowstone and Nocturne.

Enjoy pre-dinner drinks and then partake in a three-course dinner (drinks not included) at the coveted Cape Lodge restaurant. The ingredient-driven menu is seasonally curated, using the finest produce from the on-site kitchen garden and neighbouring farms.

Day 6: Wednesday – Vasse Felix Epicurean Experience (BL)

Today, enjoy the ultimate vine to table tour, with a rare opportunity to explore behind the scenes, at Vasse Felix. Beginning in the region's oldest vineyard, learn how Vasse Felix grows fruit in the most sustainable way. Pass by Margaret River's original Cabernet vines before you go behind the scenes with exclusive access to the Vasse Felix winery. Explore the barrel hall and world of artful and innovative winemaking, and then join your host for a private tasting of the Vasse Felix wine collection. Next, the chef's five-course tasting menu, paired with rare Vasse Felix Icon wines, brings your full Margaret River gastronomy experience together. Relax and while away the hours with mind-blowing interpretations of incredible local produce, uncovering the chef's philosophies of wine and food pairing along the journey.

Day 7: Thursday – Yallingup to Perth (B)

As the saying goes, all good things must come to an end. Enjoy a final breakfast before making your way back to Perth and returning your rental car at Perth Airport.

(B = breakfast, L = lunch, D = dinner, HT = High Tea)

From **\$3199*** per person twin share

7 DAYS | PERTH TO PERTH

OPERATOR: Ultimate Journeys by Viva Holidays

TRAVEL TYPE: Independent

DEPARTS: Fridays (5 Apr – 2 May, 11 Oct – 19 Dec 24; 3 Jan – 27 Mar 25)

HIGHLIGHTS

- Get a bird's-eye view of Perth and Rottnest Island on a scenic seaplane flight
- Enjoy a free day in Perth to see the sights at your own pace
- Spend three nights at serene Cape Lodge, in the heart of the Margaret River wine region
- Indulge in the ultimate vine to table experience and go behind the scenes at Vasse Felix Winery
- Experience a seasonally-curated, 3-course dinner at the coveted Cape Lodge restaurant

INCLUDES

- 3 nights 5 star accommodation at InterContinental Perth City Centre in a King Classic Room
- 3 nights 5 star accommodation at Cape Lodge Yallingup in a Garden Deluxe Room
- Full breakfast daily
- High Tea, Wine Experience, In-room refreshments and nightly pre-dinner drinks at Cape Lodge
- 3-course set menu dinner at Cape Lodge on one evening (excluding beverages)
- Rottnest Island Long Lunch including return seaplane flights from Perth, glass of sparkling wine, welcome cocktail and set menu lunch at Lontara with a glass of wine or beer
- The Epicurean Tour at Vasse Felix with wine tastings and lunch with paired wines
- 4 days Group S car hire with Avis
- Private car transfer from Perth Airport to hotel



Cape Lodge



Vasse Felix Winery, Margaret River



Elizabeth Quay

PERTH & SURROUNDS

Perth is the perfect outdoor city boasting glorious weather, a variety of beautiful parks, endless beaches and natural bushland. Its heart is bustling with new bars, restaurants, shopping and cultural spaces. Murray and Hay Street Malls are where you'll find a range of stores and cafés. Seek out the bar scene tucked away in Perth's laneways or enjoy a meal at Elizabeth Quay. Explore Kings Park with over 400 hectares of gardens and bushlands or sample delicious wines in the Swan Valley. Perth has 19 beautifully clean and uncrowded beaches. From iconic Cottesloe to the surf hotspot of Scarborough, you're sure to find a spot to soak up the sun. Fremantle blends the old with the new. Take in the classic colonial architecture or sip your coffee along the Cappuccino Strip.

SEE

- View the largest coin of pure gold ever made and see exhibits worth more than \$25 million at the Perth Mint

DO

- Head down to Fremantle to check out the wall art in the old cells of the Fremantle Prison

EAT & DRINK

- Venture to Subiaco, just 4km from the city centre, and try some of Perth's newest restaurants including La Condesa, Subi Continental and Yamas

WHAT'S ON

Perth Royal Show

21 to 28 September

Ever Now

2 to 8 October (dates to be confirmed)



Cottesloe Beach



Scarborough Beach



Rottneet Island

Courtesy of Tourism Western Australia

Courtesy of Tourism Western Australia



Fremantle Markets

PERTH

REF.	HOTELS	PAGE
1	Comfort Inn & Suites Goodearth Perth	23
2	Crown Metropol Perth	26
3	Crown Promenade Perth	24
4	Crown Towers Perth	26
5	Crowne Plaza Perth	25
6	Duxton Hotel Perth	27
7	Holiday Inn Perth City Centre	24
8	Holiday Inn West Perth	23
9	Hyatt Regency Perth	27
10	InterContinental Perth City Centre	28
11	Metro Hotel Perth	23
12	Metro Hotel Perth City	23
13	Novotel Perth Langley	25
14	Quality Hotel Ambassador Perth	24
15	Vibe Hotel Subiaco Perth	25

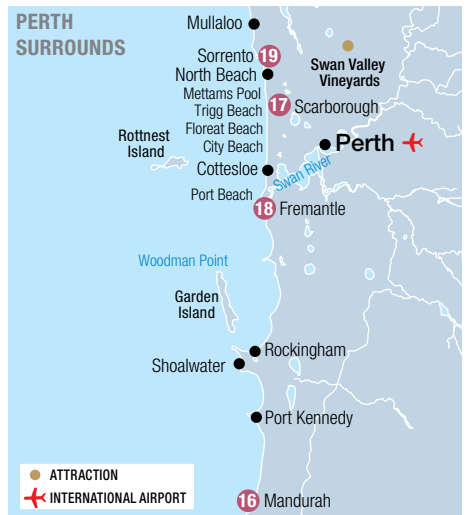
PERTH SURROUNDS

REF.	APARTMENTS	PAGE
16	Seashells Mandurah	29
17	Seashells Scarborough	29

REF.	HOTELS	PAGE
18	Esplanade Hotel Fremantle by Rydges	28
19	Quality Resort Sorrento Beach	29
17	Rendezvous Hotel Perth Scarborough	29



Matagarup Bridge & Perth City



PERTH TOURS



PRIVATE AIRPORT TRANSFERS

Arrive in style with a private car transfer. Car transfers are available from Perth Domestic Airport to Perth CBD accommodation, as well as surrounding areas. 24 hours a day, 7 days a week. Sit back, relax and enjoy the passing scenery as you are transferred in air-conditioned comfort. Travel distance from Perth Airport to Perth CBD is approximately 12 kilometres.

Operator: Airlink Ground Transport

	Sedan 1 to 3 People	Small Van 4 to 7 People
Perth CBD/Burswood/ Subiaco	\$169* [^]	\$229* [^]
Scarborough Beach	\$187* [^]	\$274* [^]
Fremantle/Sorrento	\$208* [^]	\$300* [^]
Mandurah	\$362* [^]	\$444* [^]
Bunker Bay	\$962* [^]	\$1066* [^]
Margaret River	\$1079* [^]	\$1211* [^]

[^]Price based on per vehicle from Perth Domestic Airport, one way. Other prices apply from Perth CBD and International Airport.



HARVEST YOUR OWN PEARL

You will never forget the truly unique, once-in-a-lifetime experience of harvesting your own Australian South Sea Pearl. Experience a journey of discovery from the history of pearling to the intricate processes of modern day pearl farming. The value of the pearl inside remains unknown until the breathtaking moment the oyster is opened. If the pearl is valued between \$500 and \$5000, it is yours to treasure.

Includes:

- One loose Pearl or AUD500 store credit per couple
- Pearl discovery presentation
- Interactive live pearl harvest
- Sparkling wine and canapés

Operator: Willie Creek Pearl Farm

Duration: 1 hour

Departs: Daily from Willie Creek Pearls, Elizabeth Quay at 10:30am, 12 noon, 2pm

	1 or 2 People
Pearl Experience	\$500*



COFFEE, CULTURE & ARTS TOUR OF PERTH

Start the day in Perth with a coffee, along with a dash of culture, art and history. Discover hidden art, laneways, secret gardens, amazing cafés and learn about the local history while exploring the city. Explore the Heritage Precinct of Perth, the old theatre district, as well as former educational precincts. Enjoy a complimentary coffee or tea at a popular local café and the wonderfully re-purposed heritage spaces. The tour concludes in the heart of the city.

Includes:

- Professional and informative commentary
- Tea, coffee or other beverage at a local café

Operator: Two Feet and a Heartbeat

Duration: 2 hours

Departs: Mon to Sat from Perth Town Hall at 10am

	Adult	Child 6-12 yrs
Walking Tour	\$63*	\$48*



HALO ROOFTOP WALKING TOUR

Experience Perth's biggest rooftop climb with HALO! Feel on top of the world - and the stadium - on this exhilarating rooftop tour. Climb 42m above the field of play and be rewarded with breathtaking views of Perth City and the Swan River. Discover behind-the-scenes insights on game day operations and how the stadium was constructed on beautiful Whadjuk Noongar Country, as you take the 360-degree walk around the Stadium roof.

Includes:

- 90 minute guided tour • Hat and group photo

Operator: Optus Stadium

Duration: 1 hour 30 minutes

Departs: From THE OZONE at Optus Stadium
Tue to Fri at 3:30pm⁺, 6pm⁺
Sat, Sun at 10:30am⁺, 1pm⁺

⁺Times subject to change.

	Adult	Child 8-17 yrs
Rooftop Walking Tour	\$99*	\$60* [^]

[^]Not suitable for children under 8 yrs. Must be accompanied by an adult and weight restrictions apply.



PERTH SEGWAY TOURS

Tour around Perth by Segway and see all the city sights.

Includes:

- Use of Segway, safety helmet and vest
- Segway training • Expert guide
- Informative commentary via radio headsets

Operator: Segway Tours WA

Duration: Riverside City Tour: 1 hour
Kings Park & East Foreshore Tour:
90 minutes

Departs: Daily from Barrack Street Jetty, Perth
Riverside Tour: 9am, 12:30pm, 4pm
Kings Park & Botanic Gardens Tour: 10:30am
East Swan River Foreshore & City Tour: 2pm

Not suitable for children under 12 yrs. Weight restrictions apply.

	Adult	Child 12-17 yrs
Perth Riverside Tour	\$89*	\$79*
Kings Park & Botanic Gardens Tour/East Swan River Foreshore Tour	\$129*	\$115*



ZIP+CLIMB - DAY

Zipline over Perth's Swan River at up to 75km per hour. Experience the adrenaline rush and spectacular views from Matagarup Bridge as you climb, shimmy and slide past the bridge beams to reach the SkyView - an open-air viewing platform above the river - before zip-lining back to home base. A must-do when in Perth.

Includes:

- Guided tour to the top of Matagarup Bridge
- Zipline over the Swan River
- Photos

Operator: Matagarup Zip+Climb Perth

Duration: 2 hours

Departs: Daily from Camfield Drive, Burswood Park between 11am and 4pm

	Adult	Child 8-15 yrs
Zip+Climb Day	\$165*	\$129* [^]

[^]Not suitable for children under 8. Must be accompanied by an adult and weight restrictions apply.



HALF DAY MORNING PERTH & FREMANTLE CITY EXPLORER

Starting in Perth, this tour takes in all major attractions of the revitalised Perth CBD including the Western Australian Cricket Ground (WACA) and Optus Stadium. Then head to Kings Park Botanical Gardens to take in the stunning views from the war memorial overlooking the city skyline. Continue through the affluent Western Suburbs, locally known as 'Millionaire's Row', before reaching Cottesloe Beach where you will see the sparkling Indian Ocean.

Travel onto historic Fremantle viewing the impressive facades of this Heritage Listed city. Choose to stay on the coach for your return to Perth or take a relaxing cruise down the Swan River (extra charge).

Includes:

- Expert driver/guide with informative commentary
- Transport by air-conditioned coach
- Pick-up from selected Perth accommodation
- Swan River cruise (Cruise option)

Operator: Australian Pinnacle Tours

Duration: 4 hours 30 minutes (without cruise)
6 hours (with cruise)

Departs: From Crown Perth Complex
Without Cruise: Daily except Wed at 8am
With Cruise: Fri, Sat, Sun at 8am (Apr – Oct),
Daily except Wed at 8am (Nov – Mar)

	Adult	Child 4-12 yrs
Tour Without Cruise	\$84*	\$50*
Tour With Cruise	\$129*	\$80*



SWAN VALLEY GOURMET WINE CRUISE

Cruise through the Swan Valley; indulge in premium West Australian wines and a scrumptious cheese board. Visit Sandalford Estate for an exclusive behind-the-scenes winery tour and tasting. Enjoy a grazing table lunch before boarding your boat back to Perth.

Includes:

- Return cruise from Perth to the Swan Valley
- Morning tea • Captain's commentary • West Australian wine tasting and cheese platter on board
- Sandalford Estate Winery tour, wine tasting and grazing table lunch • Dessert and wine on return cruise

Operator: Captain Cook Cruises

Duration: 7 hours 15 minutes

Departs: From Pier 3 Barrack Street Jetty, Perth at 9:45am, Fri, Sat, Sun (Apr – Oct),
Wed, Fri, Sat, Sun (Nov – Mar)

	Adult
Full Day Tour	\$235*



PERTH SWAN RIVER DINNER CRUISE

Admire the lights of Perth on this enchanting dinner cruise on the iconic Swan River. Savour the tempting hot buffet selection, salads and cold dishes, followed by dessert, tea and coffee. Enjoy complimentary beer, wine and soft drinks throughout the evening with live entertainment.

Includes:

- Return Swan River scenic cruise
- Buffet dinner with dessert
- Standard beer, wine and soft drinks
- Live entertainment

Operator: Captain Cook Cruises

Duration: 2 hours 30 minutes

Departs: From Pier 3 Barrack Street Jetty, Perth at 7:30pm Sat (Feb – Oct)
Fri, Sat (Nov – Jan)

	Adult	Child 4-12 yrs
Dinner Cruise	\$170*	\$130*



PERTH SCENIC FLIGHT

Enjoy the ultimate Perth sightseeing adventure on a scenic seaplane flight. Get a bird's-eye view of the cityscape, flying over iconic landmarks such as Optus Stadium and the Crown Casino, taking in Cottesloe Beach and the expanse of the Swan River to Fremantle. Experience the thrill of a water take-off and landing from the heart of Perth's CBD and marvel at the panoramic aerial views.

Includes:

- 15 to 20 minute scenic flight

Operator: Swan River Seaplanes

Duration: 30 minutes

Departs: Daily from Queen Street Jetty, South Perth at 12 noon (Dec – Jan)
Thu & Sat (Apr, Oct, Nov, Feb, Mar)

	Adult	Child 2-12 yrs
Seaplane Flight	\$205*	\$155*

*PRICES ARE A GUIDE ONLY, subject to change and availability and are in Australian Dollars. Prices are per person, unless otherwise specified and based on travel in low season. For full terms and conditions, refer to the Booking Conditions on the inside back cover of this brochure.

PERTH TOURS



MARGARET RIVER TOUR

Visit the iconic Busselton Jetty, then head to one of Margaret River's boutique breweries for lunch, with beer and wine tastings. Explore Mammoth Cave before passing through the Boranup Forest. Stop at Cape Leeuwin Lighthouse, then take a brief stroll through the township of Margaret River before returning to Perth.

Includes:

- Cave visit
- Beer and wine tastings
- Lunch
- Expert guide and informative commentary
- Return transfers from selected Perth accommodation

Operator: Australian Pinnacle Tours

Duration: 12 hours 30 minutes

Departs: Mon, Tue, Thu, Fri, Sat from Crown Perth Complex at 8am

	Adult	Child 4-12 yrs
Full Day Tour	\$245*	\$138*



WAVE ROCK, YORK & ABORIGINAL CULTURE

Journey to Hyden, home of Wave Rock. Visit historic York. Pass by Dog Cemetery and Hippo's Yawn. Choose to visit either a wildlife park, view a unique antique lace collection or an amazing toy soldier museum before continuing onto The Humps and Mulka's Cave which contains sacred Aboriginal landmarks.

Includes:

- Wave Rock Cultural tour
- Expert guide with informative commentary
- Country style lunch • Admission fees
- Return transfers from selected Perth accommodation

Operator: Australian Pinnacle Tours

Duration: 12 hours 30 minutes

Departs: Tue, Wed, Fri, Sun from Crown Perth Complex at 8am

	Adult	Child 4-12 yrs
Full Day Tour	\$245*	\$138*



PINNACLES DESERT, NEW NORCIA & BENEDICTINE HISTORY

This tour combines the history of Australia's only Benedictine Abbey with the Pinnacles Desert. Pass through the Swan Valley to New Norcia. Visit the Benedictine Community and stop at the museum or art gallery. Continue to the lobster fishing town of Cervantes, explore the Pinnacles Desert. Wildflower viewing stops are made in season (Sep – Oct).

Includes:

- Lunch • Admission fees
- Expert guide • Informative commentary
- Return transfers from selected Perth accommodation

Operator: Australian Pinnacle Tours

Duration: 11 hours

Departs: From Crown Perth Complex at 8am, Mon (Apr – May, Dec – Mar), Mon, Thu (Sep – Nov)

	Adult	Child 4-12 yrs
Full Day Tour	\$245*	\$138*



PINNACLES, KOALAS & SANDBOARDING 4WD ADVENTURE

Travel to the Swan Valley with a short stop at Caversham Wildlife Park. Continue to Lancelin and 4WD over the sand dunes followed by thrilling sand boarding. Travel to the lobster fishing town of Cervantes. Enjoy fish and chips before travelling on to Nambung National Park, home of the Pinnacles Desert.

Includes:

- Pinnacles Desert 4WD tour with sandboarding
- Caversham Wildlife Park • Fish and chips lunch
- Informative commentary • Expert guide
- Return transfers from selected Perth accommodation

Operator: Australian Pinnacle Tours

Duration: 11 hours 30 minutes

Departs: Daily from Crown Perth Complex at 8am

	Adult	Child 4-12 yrs
Full Day Tour	\$245*	\$138*



PINNACLES SUNSET & STARGAZING

Travel north towards Yanchep National Park to see koalas and kangaroos. Stop at the magical Pinnacles Desert to view the mystical limestone rock formations. Experience the moonlike landscape come to life as the sun sets over the Indian Ocean and the moon rises. Enjoy dinner in a traditional tavern in Cervantes.

Includes:

- Yanchep National Park
- Pinnacles Desert sunset
- Stargazing • Dinner • National park fees
- Return transfers from selected Perth accommodation

Operator: Australian Pinnacle Tours

Duration: 8 hours

Departs: Mon, Wed, Thu, Fri, Sun from Crown Perth Complex at 3pm (Apr, Oct – Mar), 2pm (May – Sep)

	Adult	Child 4-12 yrs
Afternoon/Evening Tour	\$215*	\$120*



PINNACLES, YANCHEP & SWAN VALLEY

Travel to Yanchep National Park for a quick stop to see koalas and kangaroos. Continue to Nambung National Park and the mystical Pinnacle Desert for a walk through the fascinating landscape. Enjoy lunch at Cervantes followed by a behind-the-scenes tour of a Western Australia Rock Lobster factory. Before returning to Perth, visit the iconic Swan Valley and sample some of the regions offerings such as chocolate, nougat and gourmet nuts.

Includes:

- Tastings at Swan Valley • Fish and chip lunch
- Expert commentary • Return transfers from selected Perth accommodation

Operator: Australian Pinnacle Tours

Duration: 10 hours 30 minutes

Departs: Tue, Fri, Sat from Crown Perth Complex at 8am

	Adult	Child 4-12 yrs
Full Day Tour	\$215*	\$120*

* PRICES ARE A GUIDE ONLY, subject to change and availability and are in Australian Dollars. Prices are per person, unless otherwise specified and based on travel in low season. For full terms and conditions, refer to the Booking Conditions on the inside back cover of this brochure.

COMFORT INN & SUITES GOODEARTH PERTH



Standard Studio

195 Adelaide Terrace, Perth
MAP PAGE 19

From **\$179***

- ❖ Walking distance to all major attractions including Perth's CBD
- ❖ Massage and treatment facilities available
- ❖ Amazing views of the Swan River from the restaurant and bar

Location: Close to CBD shopping and entertainment areas. Distances: Perth Airport 12km, Hay Street Mall 200m.

Property Features: Restaurant, Bar, Beauty salon, Shop, Guest laundry, Lift, 24 hour reception, Parking (limited – free), 180 rooms.

Room Features: Air-conditioning, Tea/coffee making facilities, Limited cooking facilities with microwave, Cable TV, Ironing facilities.

Max Capacity: Standard Studio/Superior Studio – 3, Family Suite/Open Plan Suite – 5.



METRO HOTEL PERTH CITY



Standard

200 Hay Street, East Perth
MAP PAGE 19

From **\$190***

- ❖ Walk to the WACA Cricket Ground and Perth Mint
- ❖ Spacious guest rooms with natural light
- ❖ Easy access to Matagarup Bridge and Optus Stadium

Location: On the eastern side of the city within walking distance of the Swan River foreshore. Distances: Perth Airport 15km, Hay Street Mall 1.4km.

Property Features: Restaurant, Café, Bar, Laundry/dry cleaning service, Guest laundry, Lift, Parking (limited – extra charge), Non smoking, 94 rooms.

Room Features: Air-conditioning, Mini refrigerator, Tea/coffee making facilities, Ironing facilities, Hair dryer.

Max Capacity: Standard/Standard King – 2.



HOLIDAY INN WEST PERTH



Standard

1309 Hay Street, Perth
MAP PAGE 19

From **\$230***

- ❖ Trendy boutique hotel in West Perth
- ❖ Modern and comfortable rooms
- ❖ Dine at Italian restaurant Julio's, set in a Heritage Listed building attached to hotel

Location: In central West Perth on Hay Street. Distances: Perth Airport 15km, Hay Street Mall 2km.

Property Features: Bar, Restaurant, Room service, Gym, Laundry/dry cleaning service, Lift, Non smoking, 24 hour reception, Parking (off-site), 101 rooms.

Room Features: Air-conditioning, Mini refrigerator, Tea/coffee making facilities, Coffee pod machine, Ironing facilities, Hair dryer, Safe.

Max Capacity: Standard/Standard Neighbourhood View/Premium/Premium City View – 2.



METRO HOTEL PERTH



Standard

61 Canning Highway, South Perth
MAP PAGE 19

From **\$180***

- ❖ Superior rooms feature balconies with stunning views of the Perth Skyline
- ❖ Ideal self-drive property with plenty of free parking
- ❖ Close to Crown Entertainment Complex and Perth Stadium

Location: Close to the CBD and easy access to both north and south highways. Distances: Perth Airport 13km, Hay Street Mall 5km.

Property Features: Restaurant, Bar, Room service, Gym, Laundry/dry cleaning service, Lift, Non smoking, 24 hour reception, Parking (free), 147 rooms.

Room Features: Air-conditioning, Balcony (Standard, Superior), Tea/coffee making facilities, Coffee pod machine (Executive Aspire), Cable TV, Ironing facilities, Hair dryer, Safe (Executive Aspire).

Max Capacity: Standard – 4, Superior – 3, Executive Aspire – 2.



*FROM PRICES ARE A GUIDE ONLY, subject to change and availability and are in Australian Dollars. Prices are per room per night for 2 people, unless otherwise specified and based on the lowest room category for travel in low season. For full terms and conditions, refer to the Booking Conditions on the inside back cover of this brochure.

PERTH ACCOMMODATION

QUALITY HOTEL AMBASSADOR PERTH



Premium Deluxe

196 Adelaide Terrace, Perth
MAP PAGE 19

From **\$179***

- ❖ Walking distance to shopping, entertainment and nightlife precincts
- ❖ All rooms feature crisp white linen and luxe ensuite bathroom
- ❖ Perfect for couples, solo travellers, and families with cots complimentary

Location: Close to major landmarks and CBD. Distances: Perth Airport 8km, Hay Street Mall 1km.

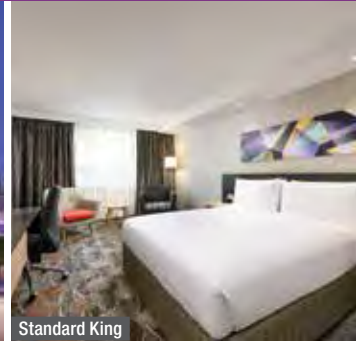
Property Features: Restaurant (breakfast only), Guest laundry, Lift, 24 hour reception, Parking (extra charge), 170 rooms.

Room Features: Air-conditioning, Separate bath and shower, Tea/coffee making facilities, Ironing facilities, Hair dryer.

Max Capacity: Premium Deluxe – 2.



HOLIDAY INN PERTH CITY CENTRE



Standard King

778-788 Hay Street, Perth
MAP PAGE 19

From **\$182*^**

- ❖ Central and convenient location
- ❖ Great for families with a kids stay and eat free program
- ❖ Free CBD bus stop located right across from hotel

Location: In the heart of the CBD on bustling Hay Street, close to entertainment, shops and restaurants. Distances: Perth Airport 15km, Hay Street Mall 130m.

Property Features: Restaurant, Bar, 24 hour room service, Laundry/dry cleaning service, Lift, 24 hour reception, 186 rooms.

Room Features: Air-conditioning, Tea/coffee making facilities, Mini refrigerator, Cable TV, Ironing facilities, Hair dryer, Safe.

Max Capacity: Standard King – 2 adults/1 child, Standard Twin/Upgraded Standard – 2 adults/2 children.

^Price applies Fri-Sun nights.



CROWN PROMENADE PERTH



Superior King

Great Eastern Highway, Burswood
MAP PAGE 19

From **\$240*^**

- ❖ Rooms feature modern contemporary furnishings, rich textures and linens
- ❖ Eight minute walk to Optus Stadium
- ❖ Restaurants, bars, theatre and nightclub are located on-site

Location: On the eastern banks of the Swan River, a 10 minute drive to the city centre and an 18 minute drive to the airport. Distances: Perth Airport 8km, Hay Street Mall 4.7km.

Property Features: Pool, Restaurant, Bar, 24 hour room service, Access to Crown Spa (at Crown Towers), Gym, Theatre, Nightclub, Guest Laundry, 24 hour reception, Parking (undercover security – extra charge), 291 rooms.

Room Features: Air-conditioning, Mini bar, Tea/coffee making facilities, In-room movies (complimentary), Cable TV, Ironing facilities, Bathrobes and slippers, Hair dryer, Safe.

Max Capacity: Superior King/Studio Spa – 3, Superior Twin – 4.

^Price applies Sun-Fri nights.



CROWNE PLAZA PERTH



Standard

54 Terrace Road, Perth
MAP PAGE 19

From **\$198***

- ❖ Superior rooms have views of the Swan River and South Perth foreshore
- ❖ Alfresco dining under the palms at Gusti Restaurant
- ❖ Open-air infinity pool with views of Langley Park

Location: In the east pocket oasis of Perth's CBD across the road from Langley Park. Distances: Perth Airport 12km, Hay Street Mall 1.8km.

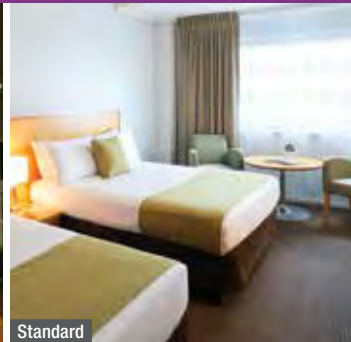
Property Features: Pool, Restaurant, Café, Bar, Room service, Gym, Bicycle hire (free), Guest laundry (free), Laundry/dry cleaning service, Lift, Non smoking, 24 hour reception, Parking (on-site), 189 rooms.

Room Features: Air-conditioning, Tea/coffee making facilities, Cable TV, Docking station, Ironing facilities, Hair dryer, Safe.

Max Capacity: Standard – 2 adults/2 children, Queen Balcony Riverview – 2.



NOVOTEL PERTH LANGLEY



Standard

221 Adelaide Terrace, Perth
MAP PAGE 19

From **\$171***

- ❖ Central location on the banks of the stunning Swan River
- ❖ Multiple dining and entertainment options on-site
- ❖ The perfect base from which to explore Perth's attractions

Location: In Perth's Central Business District and close to bars and shops. Distances: Perth Airport 10km, Hay Street Mall 1km.

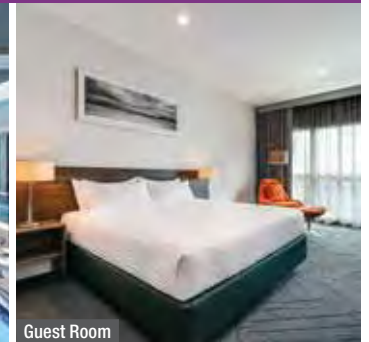
Property Features: Restaurants (2), Bars (2), 24 hour room service, Gym, Relaxation area, Laundry/dry cleaning service, Non smoking, 24 hour reception, Parking (extra charge), 256 rooms.

Room Features: Air-conditioning, Smart TV, Foxtel iQ, Tea/coffee making facilities, Mini bar, Ironing facilities, Hair dryer, Safe.

Max Capacity: Standard Queen/Standard King – 3, Standard 2 Doubles/Standard Double+Queen – 4.



VIBE HOTEL SUBIACO PERTH



Guest Room

9 Alvan Street, Subiaco
MAP PAGE 19

From **\$264***

- ❖ Rooftop bar and restaurant offer unparalleled city views
- ❖ Take a dip in the rooftop pool or relax on a sun lounge
- ❖ Trendy eateries, jazz bars and gastro pubs close by

Location: A five minute drive from Perth's CBD. Distances: Perth Airport 16km, Hay Street Mall 3.5km.

Property Features: Pool, Restaurant, Café, Bar, 24 hour room Service, Gym, Laundry/dry cleaning service, Guest laundry, Lift, Non smoking, 24 hour reception, Parking (undercover – free), 133 rooms.

Room Features: Air-conditioning, Mini bar, Tea/coffee making facilities, Ironing facilities, Hair dryer.

Max Capacity: Guest Room – 2, Deluxe Room – 2.



*FROM PRICES ARE A GUIDE ONLY, subject to change and availability and are in Australian Dollars. Prices are per room per night for 2 people, unless otherwise specified and based on the lowest room category for travel in low season. For full terms and conditions, refer to the Booking Conditions on the inside back cover of this brochure.

PERTH ACCOMMODATION

CROWN METROPOL PERTH



Luxe King

Great Eastern Highway, Burswood
MAP PAGE 19

From **\$295***[^]

- ◆ Well-appointed luxurious rooms and suites with deep soaking bath
- ◆ Minutes away from entertainment and dining precincts
- ◆ Direct access to Crown Entertainment Complex

Location: Overlooking the Swan River and close to the casino. Distances: Perth Airport 8km, Hay Street Mall 4.8km.

Property Features: Pools (3 – including children’s with waterslides), Restaurants (2), Bar, 24 hour room service, Access to Crown Spa (at Crown Towers), Gym, Games room, Theatre, Nightclub, Convention Centre, 397 rooms.

Room Features: Air-conditioning, Mini bar, Cable TV, Tea/coffee making facilities, In-room movies (complimentary), Docking station, Ironing facilities, Bathrobes, Hair dryer, Safe.

Max Capacity: Luxe King/Luxe View King/Luxe King Spa/Loft Suite – 3, Luxe Twin/Luxe View Twin – 4, The Apartment – 6.

[^]Price applies Sun-Fri nights.



CROWN TOWERS PERTH



Deluxe King

Great Eastern Highway, Burswood
MAP PAGE 19

From **\$399***[^]

- ◆ Rooms offer stunning views of the Darling ranges, Swan River or city skyline
- ◆ Expansive lagoon pool is perfect for families
- ◆ Spend an indulgent afternoon at Crown Spa

Location: Within walking distance to the Swan River and the casino. Distances: Perth Airport 8km, Hay Street Mall 4.6km.

Property Features: Nightly entertainment, Pool, Restaurant, Bar, 24 hour room service, Fitness centre, Crown Spa, Laundry/dry cleaning service, Lift, Non smoking, 24 hour reception, Parking (valet – extra charge), 500 rooms.

Room Features: Air-conditioning, Tea/coffee making facilities, Coffee pod machine, Mini bar, Cable TV, In-room movies (complimentary), Ironing facilities, Bathrobes, Hair dryer, Safe.

Max Capacity: Deluxe King/Premier King/1 Bedroom Deluxe Villa – 2, Studio/Premier Suite/Executive Suite/Premier Club View – 3, Deluxe Twin – 4.

[^]Price applies Sun-Fri nights.



* FROM PRICES ARE A GUIDE ONLY, subject to change and availability and are in Australian Dollars. Prices are per room per night for 2 people, unless otherwise specified and based on the lowest room category for travel in low season. For full terms and conditions, refer to the Booking Conditions on the inside back cover of this brochure.

DUXTON HOTEL PERTH



Deluxe King

1 St Georges Terrace, Perth
MAP PAGE 19

From **\$270***

- ❖ Rooms offer unique views of Perth CBD
- ❖ Outdoor swimming pool and 24 hour fitness centre
- ❖ Walk to shopping areas including Elizabeth Quay

Location: Close to central Perth and local attractions. Distances: Perth Airport 12km, Hay Street Mall 700m.

Property Features: Pool (outdoor), Restaurant, Bar, 24 hour room service, 24 hour gym, Sauna, Dry cleaning service, 24 hour reception, 304 rooms.

Room Features: Air-conditioning, Tea/coffee making facilities, Cable TV, In-room movies (pay to view), Ironing facilities, Hair dryer.

Max Capacity: Deluxe King/Club King City View/Suite – 2, Deluxe Twin/Club Twin City View – 4.



HYATT REGENCY PERTH



King

99 Adelaide Terrace, Perth
MAP PAGE 19

From **\$222***

- ❖ Contemporary rooms offer stunning Swan River or Perth city views
- ❖ Convenient location within easy reach of the city's landmarks
- ❖ Satisfy your cravings at the award-winning Cafe Restaurant

Location: Set near the banks of the Swan River. Distances: Perth Airport 10km, Hay Street Mall 2.3km.

Property Features: Pool (heated outdoor), Restaurant, Coffee shop, Bars (2), Room service, Club lounge, Sauna, Gym, Laundry service, 24 hour reception, Parking (undercover), 366 rooms.

Room Features: Air-conditioning, Tea/coffee making facilities, Mini bar, Ironing facilities, Hair dryer, Safe.

Max Capacity: King/Twin/Deluxe King/Riverview/Regency Club King/Regency Club King View/Regency Suite/Regency Executive Suite/Regency Executive Spa Suite – 3, Deluxe Queen Queen – 4.



*FROM PRICES ARE A GUIDE ONLY, subject to change and availability and are in Australian Dollars. Prices are per room per night for 2 people, unless otherwise specified and based on the lowest room category for travel in low season. For full terms and conditions, refer to the Booking Conditions on the inside back cover of this brochure.

PERTH & FREMANTLE ACCOMMODATION

INTERCONTINENTAL PERTH CITY CENTRE



Classic

815 Hay Street, Perth
MAP PAGE 19

From **\$294***[^]

- ❖ Unrivalled inner-city location, next to His Majesty's Theatre
- ❖ Club InterContinental offers exclusive benefits from booking to departure
- ❖ World-class food & beverage outlets – Heno & Rey, Ascuá & The Loft Bar

Location: Nestled in a truly unbeatable location within Perth's CBD, immersed in a vibrant area, with entertainment, dining, art, and culture at every turn. Distances: Perth Airport 12km, Hay Street Mall 200m.

Property Features: Restaurants (2), Bar, Club lounge, 24 hour room service, Fitness centre, Dry cleaning service, 24 hour reception, 240 rooms.

Room Features: Air-conditioning, In-room bar, Tea/coffee making facilities, Coffee pod machine, Smart TV with Chromecast, Docking station, Bathrobes, Hair dryer.

Max Capacity: Classic/Classic City View – 2 adults/2 children, King Cozy/ King Premier Corner – 2.

[^]Price applies Fri-Sun nights.



ESPLANADE HOTEL FREMANTLE – BY RYDGES



Superior

Corner Marine Terrace and Essex Street, Fremantle
MAP PAGE 19

From **\$250***

- ❖ Charming Heritage Listed old-world facade
- ❖ Spacious rooms and suites offer private furnished balconies
- ❖ A variety of on-site restaurants and bars nearby

Location: In downtown Fremantle and steps from most major attractions. Distances: Perth Airport 27.9km, Beach 400m.

Property Features: Pools (2), Restaurants (2), Bars (3), Room service, Exercise equipment, Bicycle hire, Sundeck, Guest laundry, Laundry/dry cleaning service, 300 rooms.

Room Features: Air-conditioning, Balcony, Mini bar, Tea/coffee making facilities, Smart TV with Streamcast, Ironing facilities, Hair dryer, Safe, Non smoking rooms.

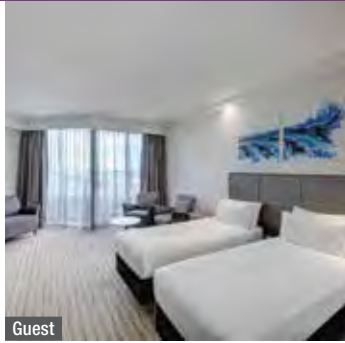
Max Capacity: Superior – 2 adults/1 child, Superior Twin/Superior Poolview/King Spa – 3.



*FROM PRICES ARE A GUIDE ONLY, subject to change and availability and are in Australian Dollars. Prices are per room per night for 2 people, unless otherwise specified and based on the lowest room category for travel in low season. For full terms and conditions, refer to the Booking Conditions on the inside back cover of this brochure.

PERTH BEACHES ACCOMMODATION

RENDEZVOUS HOTEL PERTH SCARBOROUGH



Guest

148 The Esplanade, Scarborough
MAP PAGE 19

From **\$171***

- ❖ Amazing views of the Indian Ocean from all rooms
- ❖ Spacious, stylish and modern rooms
- ❖ Families will love the heated lagoon-style swimming pool

Location: Overlooking the Indian Ocean with the soft white sand beach just moments away. Distances: Perth Airport 29km, Scarborough Beach 100m.

Property Features: Pools (2 – heated outdoor and children's wading), Restaurant, Café, Bar, 24 hour room service, Vanilla Day Spa, Gym, Tennis courts (2), Bicycle hire, Games room, Guest lounge, Laundry/dry cleaning service, 24 hour reception, Parking (extra charge), 337 rooms.

Room Features: Ocean views, Air-conditioning, Balcony, Mini bar, Cable TV, In-room movies (pay to view), Ironing facilities, Hair dryer.

Max Capacity: Guest/Deluxe View – 3.



SEASHELLS SCARBOROUGH



Collections 2 Bedroom

178 The Esplanade, Scarborough
MAP PAGE 19

From **\$245*^**

- ❖ Spacious apartments offering stunning ocean views
- ❖ Fully equipped kitchens and expansive balconies
- ❖ Two pools, one heated and the other overlooking the ocean

Location: Steps away from Scarborough Beach. Distances: Perth Airport 29km, Scarborough Beach 100m.

Property Features: Pools (2 – 1 heated), Barbecue area, Parking (undercover – free), 31 rooms.

Room Features: Ocean views, Air-conditioning, Balcony, Kitchen with microwave and dishwasher, Tea/coffee making facilities, Coffee pod machine, Cable TV, Laundry, Hair dryer, Safe.

Max Capacity: Collections 2 Bedroom – 4, Seashells 2 Bedroom – 5, Sandcastles 3 Bedroom – 7.

^Minimum 2 night stay applies.



QUALITY RESORT SORRENTO BEACH



Hotel Studio Resort View

1 Padbury Circle, Sorrento
MAP PAGE 19

From **\$222***

- ❖ Modern and spacious apartments, some with ocean views
- ❖ Apartments feature kitchen facilities and separate lounge area
- ❖ Enjoy alfresco breakfast at 76 Steps Restaurant

Location: Steps from Sorrento Beach. Distances: Perth Airport 30km, Hillarys Harbour 700m.

Property Features: Pool (heated), Spa, Restaurant, Bar, Sauna, Barbecue areas (2), Guest laundry, Parking (free), 78 rooms.

Room Features: Air-conditioning, Limited cooking facilities with microwave (1 Bedroom), Kitchen with microwave (2 and 3 Bedroom), Ironing facilities, Hair dryer.

Max Capacity: Hotel Studio Resort View/Hotel Studio Ocean View/1 Bedroom Spa Resort View/1 Bedroom Spa Ocean View – 3, 2 Bedroom – 5, 3 Bedroom – 7.



SEASHELLS MANDURAH



1 Bedroom

16 Dolphin Drive, Mandurah
MAP PAGE 19

From **\$229*^**

- ❖ Infinity-edge heated pool
- ❖ Spacious, outdoor entertainment area featuring a barbecue and grill
- ❖ Choose from one and two bedroom apartments with ocean or marina views

Location: On the beach at Comet Bay in between the ocean and the Marina. Distances: Perth Airport 78km, Beachfront.

Property Features: Pool (heated), Day spa, Barbecue area, Tennis court, Lift, Parking (undercover security – free), 59 rooms.

Room Features: Air-conditioning, Balcony, Kitchen with microwave and dishwasher, Tea/coffee making facilities, Docking station, In-room movies (free), Laundry, Jetted bath.

Max Capacity: 1 Bedroom – 3, 2 Bedroom/2 Bedroom Oceanview – 5.

^Price applies Sun-Fri nights.



ROTTNEST ISLAND

Only 19 kilometres from Perth, but another world away, lies Rottnest Island. Blessed with picturesque scenery, amazing marine life and home to some of the finest beaches and pristine bays, Rottnest Island has an unusual marsupial population known as Quokkas. These mammals are native to Rottnest and can be found almost everywhere on the island.

SEE

- Board the Captain Hussey train and admire the beauty of the south side of the island

DO

- With over 63 beaches and 20 bays, enjoy water activities like swimming, diving, fishing and surfing

EAT & DRINK

- Sip on a refreshing spritz while watching the sunset over Rottnest Bay at Pinky's Rottnest Island

WHAT'S ON

Rottnest Channel Swim

February (dates to be confirmed)



Little Salmon Bay

Courtesy of Tourism Western Australia



REF.

HOTELS

PAGE

1

Discovery Resorts – Rottnest Island

31



ROTTNEST ISLAND FERRY TRANSFERS

Travel to Rottnest Island and enjoy award-winning service on modern catamaran vessels featuring cafe facilities and free Wi-Fi. The journey to Rottnest takes approximately 30 minutes from Fremantle and 90 minutes from Perth. With multiple departures every day, sit back, relax and enjoy the ride.

Operator: SeaLink Rottnest Island

Departs: Daily from Perth Barrack Street Jetty at 8:30am and multiple daily departures from B-Shed Fremantle

	Adult	Child 4-12 yrs
From Fremantle	\$79* [^]	\$40* [^]
From Perth	\$119* [^]	\$62* [^]

[^]Price based on same day return. One way, extended return, concession and family prices also available.



ROTTNEST EXPRESS TRANSFERS

Just a short ferry ride from Perth or Fremantle, Rottnest Island has long been Western Australia's holiday destination of choice.

Rottnest Express sets sail from three convenient departure locations to suit your travel needs. Located in the CBD, Barrack Street Jetty offers daily morning departures. In Fremantle, B Shed Terminal has several departures per day, and the Northport Terminal offers a large, secure car park.

Operator: Rottnest Express

Departs: Daily from Perth Barrack Street Jetty and Fremantle's B Shed Terminal and Northport Terminal

	Adult	Child 4-12 yrs
From Fremantle	\$82* [^]	\$42* [^]
From Perth	\$124* [^]	\$65* [^]

[^]Price based on same day return. One way, extended return, concession and family prices also available.



ROTTNEST FAST FERRY TRANSFERS

Experience everything Perth's Island paradise has to offer with Rottnest Fast Ferries. Offering Western Australia's newest Rottnest Ferry, Harbour Master, this custom built catamaran offers unrivalled stability and comfort, three outside decks and wrap around panoramic windows. Departing from Hillarys Boat Harbour, only 25 minutes north of the city, there is no quicker way to Rottnest.

Courtesy transfers from selected Perth and Scarborough hotels are available on request.

Operator: Rottnest Fast Ferries

Departs: Daily from Hillarys Boat Harbour at 7:30am, 10am

	Adult	Child 4-12 yrs
From Hillarys Boat Harbour	\$90* [^]	\$53* [^]

[^]Price based on same day return. Extended return, concession and family prices also available.

ROTTNEST ISLAND TOURS & ACCOMMODATION



ROTTNEST ISLAND BY SEAPLANE

Fly to Rottneest Island in style by seaplane. Experience a thrilling water take-off and enjoy spectacular views over Perth CBD, Fremantle and the coastline. Take in the colours of Rottneest's beaches and bays as you land in Thomson Bay or the Rottneest Island airstrip.

Includes:

- Scenic flight • Return transfers from Perth CBD accommodation

Operator: Swan River Seaplanes

Duration: 20 minute one-way flight

Departs: Daily from Queen Street Jetty, South Perth at 9am, 10am, 1:30pm, 3:30pm
Daily from Rottneest Island 9:30am, 11:30am, 3pm, 4pm (Dec, Jan),
Wed to Sun (Apr, Oct, Nov, Feb, Mar)

Infant under 2 yrs free of charge when travelling on adult's lap. Combined adult/infant weight must not exceed 120kg.

	Adult	Child 2-12 yrs
One Way Scenic Flight	\$231*	\$164*
Return Scenic Flight	\$429*	\$310*



ROTTNEST ISLAND – GRAND ISLAND TOUR

Tour Rottneest's must-see locations including the Wadjemup Lighthouse, Henrietta Rocks, Oliver Hill Gun Fortification and Tunnels, Cape Vlamingh and the majestic lookout point at Cathedral Rocks. A unique scenic train ride is one of the many highlights.

Includes:

- 4 hour guided Rottneest Island tour
- Admission to Oliver Hill Gun Fortification and Tunnels
- Historic train ride • Light lunch • Island admission fee
- Transport by air-conditioned coach
- Return ferry transfers from Perth or Fremantle

Operator: SeaLink Rottneest Island

Duration: 7 – 9 hours (subject to ferry timetable)

Departs: Daily from Perth Pier 3 Barrack Street Jetty at 8:30am, Fremantle B Shed at 9am

	Adult	Child 4-12 yrs
From Fremantle	\$178*	\$100*
From Perth	\$218*	\$122*



ROTTNEST ISLAND LONG LUNCH

Travel to Rottneest Island in style by seaplane from Perth. On arrival, enjoy free time to explore this beautiful island. Then indulge in a multi-course, chef selection lunch at Rottneest Island's premier waterfront restaurant. This is truly the ultimate beachside escape.

Includes:

- Glass of sparkling wine at check-in
- Return scenic flight Perth to Rottneest Island
- 5-course set menu lunch including welcome cocktail, a glass of wine or beer at Lontara Restaurant
- Return transfers from Perth CBD accommodation

Operator: Swan River Seaplanes

Duration: 6 hours 30 minutes

Departs: Daily from Queen Street Jetty, South Perth at 10am (Dec, Jan),
Thu to Sun (Apr, Oct, Nov, Feb, Mar)

	Adult	Child 2-12 yrs
Seaplane Flight & Lunch	\$509*	\$430*

DISCOVERY RESORTS – ROTTNEST ISLAND



Deluxe Oceanside Tent



Standard Tent

Strue Road, Rottneest Island
MAP PAGE 30

From **\$299***

- ❖ View a clear starry night from the comfort of your eco-tent deck
- ❖ Lagoon style swimming pool and barbecue areas
- ❖ All-day dining available at Pinky's Rottneest Island

Includes full breakfast daily.

Location: Situated on the beachfront and within walking distance to the town centre and shops. Distances: Ferry terminal 1km.

Getting There: Multiple daily ferry or seasonal seaplane transfer options are available - see above and page 30 for details. As Rottneest Island is a vehicle free zone, guests are required to walk 1km from the ferry terminal to the resort (luggage is transferred from the ferry).

Property Features: Pool (resort style), Restaurant, Bar, Barbecue areas, Sundeck, 83 rooms.

Room Features: Fan, Balcony, Limited cooking facilities with kettle and toaster (excluding Standard Tent), Private en suite, Hair dryer, All rooms non smoking.

Max Capacity: Standard Tent/Superior Tent/Deluxe Tent/Deluxe Oceanside Tent – 2, Superior Access Tent – 4, Superior Family Tent/Deluxe Family Tent – 2 adults/3 children.



*FROM PRICES ARE A GUIDE ONLY, subject to change and availability and are in Australian Dollars. Unless otherwise specified, prices for day tours and transfers are per person and prices for accommodation are per room per night for 2 people based on the lowest room category. All prices based on travel in low season. For full terms and conditions, refer to the Booking Conditions on the inside back cover of this brochure.



Boston Brewing Co., Denmark, The South West

Courtesy of Tourism Western Australia

MARGARET RIVER REGION & THE SOUTH WEST

Rolling vineyards are set against a backdrop of breathtaking coastal and forest scenery in the Margaret River region. Indulge in gourmet delights from world-renowned wine, local truffle and freshwater crayfish to local cheeses, chocolate and fudge.

The South West is blessed with natural treasures. Watch Humpback whales on their annual migration, see the striking granite coastline known as The Gap in Albany, and take a postcard perfect snap of Greens Pool in Denmark.

SEE

- Visit Lake Cave at Boranup and see the delicate crystal formations that grow from the cave roof, reflected in the tranquil lake

DO

- Wander through the treetops along the Valley of the Giants Tree Top Walk

EAT & DRINK

- Savour dishes made from farm-fresh ingredients combined with innovative culinary techniques at Fruì Momento, one of latest restaurant offerings in the Margaret River region

WHAT'S ON

Margaret River Pro

11 to 21 April

Cabin Fever Festival

12 to 21 July



MARGARET RIVER REGION

REF.	APARTMENTS	PAGE
1	Abbey Beach Resort, Busselton	34
2	Margarets Beach Resort, Gnarabup Beach	35
3	Margarets In Town Apartments, Margaret River	35
4	Seashells Yallingup	34
5	Smiths Beach Resort, Yallingup	34

REF.	HOTELS	PAGE
6	Cape Lodge, Yallingup	35
1	RAC Busselton Holiday Park	34

THE SOUTH WEST

REF.	HOTELS	PAGE
7	Comfort Inn Bay of Isles, Esperance	36
7	Hospitality Esperance, SureStay Collection by Best Western	36
8	RAC Karri Valley Resort, Pemberton	36
9	Sleepwell Motel Albany	36

MARGARET RIVER REGION & SOUTH WEST TOURS



MAXIMUM GROUP SIZE
6

ESTATE TOUR & LUNCH

Travel beyond the cellar door with an immersive exploration of Voyager Estate, from the rich soils of the vineyards to the wine ageing in the cellar. Enjoy a guided walk through the vineyards, before moving on to the winery. Taste wine straight from the barrel and gain an insight into the winemaking craft. Finish the tour with lunch paired with wine.

Includes:

- Guided estate tour
- Barrel tasting in the winery
- Hosted tasting of 6 wines
- Lunch with paired wines

Operator: Voyager Estate

Duration: 4 hours

Departs: Wed to Sun from Voyager Estate Cellar Door at 11am

Not suitable for children under 18 yrs.

	Adult
Wine Experience & Lunch	\$255*



LEEWIN SEASONAL EXPERIENCE: ART, WINE & FARM-TO-FORK INDULGENCE

Celebrating fine wine, food and the arts, this tour is the most elegant way to be introduced to the Leeuwin Estate. Upon arrival, admire the contemporary artworks that feature on the labels of Leeuwin's premium 'Art Series' range of wines. A tutored wine tasting of five Leeuwin Estate wines accompanied by Western Australian delicacies, precedes lunch in the restaurant.

Includes:

- Welcome glass of Brut • Tutored wine tasting with chef canapés • 3-course lunch paired with Art Series wines

Operator: Leeuwin Estate

Duration: 3 hours 30 minutes

Departs: Wed to Sun from Leeuwin Estate, Margaret River at 11am

Not suitable for children under 18 yrs.

	Adult
Wine Experience & Lunch	\$315*



MAXIMUM GROUP SIZE
10

THE EPICUREAN TOUR

The ultimate vine to table tour, this immersive experience includes the rare opportunity to explore behind the scenes at Vasse Felix. Gain unique historical insights into the region, pass by Margaret River's original Cabernet vines, explore the barrel hall and join your host for a private tasting of the Vasse Felix Wine collection. The chef's five-course tasting menu, paired with rare Vasse Felix Icon wines brings your full Margaret River gastronomy experience together.

Includes:

- Guided museum, winery and vineyard tour
- Private wine tasting
- 5-course lunch with matching wines

Operator: Vasse Felix

Duration: 5 hours

Departs: Mon to Fri from Vasse Felix, Margaret River at 10am

Not suitable for children under 18 yrs.

	Adult
Wine Experience & Lunch	\$350*



MAXIMUM GROUP SIZE
6

MARGARET RIVER DISCOVERY

Experience Margaret River's great outdoors while tasting some of the region's best wines. Start the day with a canoe ride down the tranquil Margaret River. Relax with a coffee at one of the region's top beach breaks. Stop at an ancient waterhole to taste local honey and reflect on Aboriginal history. Enjoy lunch at Fraser Gallop, then end the day on a 4WD adventure and walk a section of the Cape to Cape Track – Wilyabrup Cliffs.

Includes:

- Canoeing
- Morning tea
- Lunch at a winery
- Transport by luxury 4WD vehicle

Operator: The Margaret River Discovery Co.

Duration: 6 hours

Departs: Mon to Fri from Margaret River Visitor Centre at 10:15am

	Adult
Day Tour	\$218*



MAXIMUM GROUP SIZE
12

COASTAL & WILDLIFE ECO TOUR

Discover the stunning coastal scenery and wildlife of the Margaret River region. Visit Meelup Regional Park and view the diverse flora and beautiful beaches. See the ancient limestone cliffs of Cape Naturaliste and spot dolphins, whales and wildflowers (Jun – Dec). Take photos on an interpretive walk along the Cape to Cape Track. Indulge in a local gourmet platter then relax on a kangaroo safari.

Includes:

- Gourmet platter and glass of local wine or beer
- Use of binoculars • Local guides
- Return transfers from Busselton and Dunsborough accommodation (Pick up fee applies for other areas)

Operator: South West Eco Discoveries

Duration: 3 hours 30 minutes

Departs: Daily from Margaret River Region at 9am (Apr – Jun, Sep – Mar)

	Adult	Child 2-14 yrs
Half Day Tour	\$145*	\$80*



MAXIMUM GROUP SIZE
11

TASTING DELICIOUS DENMARK

This is more than just a food and wine tour! Indulge your senses and discover the gourmet gems of the Denmark food and wine scene. Sample an array of cheeses, handmade chocolates, honey, ice cream and award-winning wines. Travel through towering cathedrals of karri forest and relax with views over the stunning landscape while enjoying a delicious shared platter lunch.

Includes:

- Wine and food tastings
- Shared platter lunch
- Transport by air-conditioned mini van
- Services of a knowledgeable guide

Operator: Albany Tours

Duration: 6 hours 30 minutes

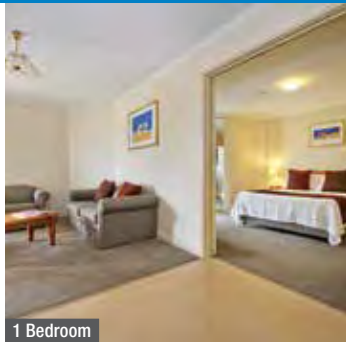
Departs: Thu, Fri & Sun from Albany Visitor Centre at 9:30am

Not suitable for children under 18 yrs.

	Adult
Day Tour	\$199*

MARGARET RIVER REGION ACCOMMODATION

ABBEY BEACH RESORT, BUSSELTON



1 Bedroom

595 Bussell Highway, Busselton
MAP PAGE 32

From **\$273***

- ❖ Set on four hectares of landscaped gardens and a serene lake
- ❖ Comfortable and spacious rooms with stunning views
- ❖ Families will love the three pools and children's playground

Location: On the beachfront of Geographe Bay and close to Busselton's tourist precinct. Distances: Town centre 7.7km, Beachfront.

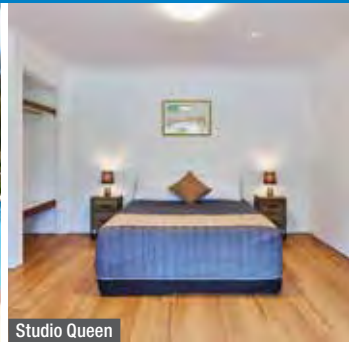
Property Features: Pools (3 – 2 outdoor, 1 heated indoor), Restaurants (2), Bars (3), 24 hour room service (except 2 and 3 Bedroom), Gym, Tennis court, Squash court, Sauna, Children's playground, Bicycle hire, Barbecue area, Laundry service, 213 rooms.

Room Features: Air-conditioning, Balcony, Kitchen (1, 2 and 3 Bedroom), Limited cooking facilities (Studio Spa Suite), Laundry (2 and 3 Bedroom), Ironing facilities, Spa bath, Hair dryer.

Max Capacity: Studio Spa Suite – 2, 1 Bedroom – 3, 2 Bedroom – 5, 3 Bedroom – 7.



RAC BUSSELTON HOLIDAY PARK



Studio Queen

97 Caves Road, Busselton
MAP PAGE 32

From **\$175***

- ❖ Self contained cabins and motel style rooms
- ❖ Gazebos for barbecues and picnics and a natural lake
- ❖ Two pools, mini golf and kids' playground

Location: Set within eight hectares of natural bushland, close to Busselton and Dunsborough. Distances: Town centre 9km, Beach 330m.

Property Features: Pools (2), Mini golf, Children's playground, Bicycle hire, Games room, Guest laundry, Parking (free), 38 rooms.

Room Features: Air-conditioning, Patio, Tea/coffee making facilities, Limited cooking facilities with microwave (Studio Queen/1 Bedroom Cabin), Full cooking facilities (2 Bedroom Cabin), Ironing facilities.

Max Capacity: Studio Queen – 2, 1 Bedroom Cabin – 4, 2 Bedroom Cabin – 5.



SEASHELLS YALLINGUP



1 Bedroom

1 Yallingup Beach Road, Yallingup
MAP PAGE 32

From **\$219*^**

- ❖ Ideal getaway for singles, couples and families
- ❖ Self-contained, modern one and two bedroom apartments
- ❖ Adjacent to a bar with live entertainment and a fireplace in the guest lounge

Location: A quick walk to Yallingup Beach and adjacent to Heritage Listed Caves House Hotel. Distances: Town centre 1km, Beach 500m.

Property Features: Restaurant, Bar, Guest lounge, Barbecue area, Lift, Parking (free), 18 rooms.

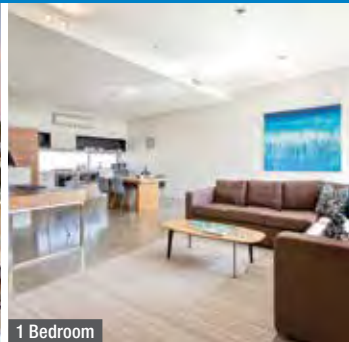
Room Features: Air-conditioning, Balcony, Tea/coffee making facilities, Kitchen, Cable TV, In-room movies (free), Laundry, Spa bath (except some 1 Bedrooms), Hair dryer, Safe.

Max Capacity: 1 Bedroom – 3, 2 Bedroom – 5.

^Price applies Sun-Thu nights.



SMITHS BEACH RESORT, YALLINGUP



1 Bedroom

67 Smiths Beach Road, Yallingup
MAP PAGE 32

From **\$483*^**

- ❖ Perfectly positioned on Smiths Beach overlooking the Indian Ocean
- ❖ Private beachfront yoga sessions available
- ❖ Direct access to the iconic Cape to Cape walking track

Location: In the heart of the Margaret River wine region, close to Dunsborough and Yallingup. Distances: Town centre 7km, Beachfront.

Property Features: Pools (2 – outdoor & kid's wading pool)⁺, Restaurant, Gourmet deli and wine store, Room service, Yoga (extra charge), Tennis court, In-room massages, Parking (outdoor), Non smoking, 60 rooms.

Room Features: Air-conditioning, Balcony, Kitchen with microwave and dishwasher, Tea/coffee making facilities, Cable TV, Washer/dryer, Bathrobes, Hair dryer.

Max Capacity: 1 Bedroom/Ocean View Villa – 2, 2 Bedroom Garden Villa/Ocean View Villa – 4 adults or 2 adults/3 children, 3 Bedroom Beach House/Ocean View Villa – 6, 4 Bedroom Beach House – 8.

^Price applies Mon-Thu nights. Minimum 2 night stay applies. + Pools closed May – Jun.



CAPE LODGE, YALLINGUP



Garden View

3341 Caves Road, Yallingup
MAP PAGE 32

From **\$765***[^]

- ❖ Private country-house hotel in the heart of Margaret River
- ❖ The iconic Cape Lodge Restaurant showcases the best of the region's produce
- ❖ Spacious and airy rooms offer garden or lakeside views

Includes full breakfast daily, in-room refreshments, afternoon tea, wine experience and a complimentary pre-dinner drink.

Location: Centrally located between Margaret River, Dunsborough and Yallingup.
Distances: Town centre 12km, Beach 10km.

Property Features: Pool, Restaurant, Wine Lounge, Tennis court, Parking (free), 22 rooms.

Room Features: Air-conditioning, Mini bar, Tea/coffee making facilities, Smart TV, Hair dryer, Safe, All rooms non smoking.

Max Capacity: Garden View/Garden Deluxe/Lakeside – 2, Vineyard Residence – 8.

[^]Minimum 2 night stay applies.



FREE



MARGARETS BEACH RESORT, GNARABUP BEACH



Studio

1 Resort Place, Gnarabup Beach
MAP PAGE 32

From **\$221***

- ❖ Wide variety of rooms, ideal for families or couples
- ❖ Families will love the barbecue area and adjoining children's playground
- ❖ Steps to pristine Gnarabup Beach

Location: A 20 minute drive to the Margaret River township and close to wineries and major attractions. Distances: Margaret River Township 10km, Beach 500m.

Property Features: Pool (heated outdoor – seasonal), Restaurant, Bar, Sauna, Children's playground, Barbecue area, 55 rooms.

Room Features: Air-conditioning, Kitchen with microwave and dishwasher (2 Bedroom, 2 Bedroom Spa, 2 Bedroom Townhouse, 4 Bedroom Beach House), Limited cooking facilities (Studio, 1 Bedroom Spa), Washer/dryer, Ironing facilities.

Max Capacity: Studio/1 Bedroom Spa – 2, 2 Bedroom/2 Bedroom Spa/2 Bedroom Spa Townhouse – 6, 4 Bedroom Beach House – 8.



FREE NIGHTS



MARGARETS IN TOWN APARTMENTS, MARGARET RIVER



Standard

Corner Bussell Highway and Tunbridge Street, Margaret River
MAP PAGE 32

From **\$210***

- ❖ Modern apartments within walking distance to local restaurants
- ❖ In the heart of Margaret River
- ❖ Heated swimming pool, tennis court and bar

Location: Steps from local shops, markets and galleries and 20 minutes' drive to Margaret River beaches. Distances: Town centre 100m, Beach 10km.

Property Features: Pool (heated outdoor), Bar, Tennis court, Barbecue area, Guest laundry, Parking (free), 61 rooms.

Room Features: Air-conditioning, Balcony, Microwave, Kitchen with dishwasher (except Standard), Laundry (except Standard), Ironing facilities, Spa bath (except Standard), Hair dryer, Safe.

Max Capacity: Standard/1 Bedroom/1 Bedroom Spa – 2, 2 Bedroom Loft/2 Bedroom Combo – 4, 3 Bedroom Townhouse – 6.

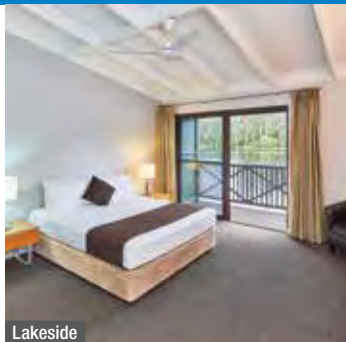


FREE NIGHTS



SOUTH WEST ACCOMMODATION

RAC KARRI VALLEY RESORT, PEMBERTON



Lakeside

Vasse Highway, Pemberton
MAP PAGE 32

From **\$215***[^]

- ❖ Rustic two and three bedroom chalets and motel style rooms available
- ❖ Families will love the canoeing and mini golf
- ❖ The Lakeside Restaurant offers breathtaking views of Lake Beedelup

Location: Positioned on the banks of Lake Beedelup and close to local wineries. Distances: Town centre 23km, Beach 22km.

Property Features: Restaurant, Tennis court, Animal farm, Children's playground, Mini golf, Barbecue area, Convenience store, Bottle shop, Guest laundry, 62 rooms.

Room Features: Balcony, Fan, Tea/coffee making facilities, Limited cooking facilities with microwave and stove (2 and 3 Bedroom Chalets), Ironing facilities, Hair dryer.

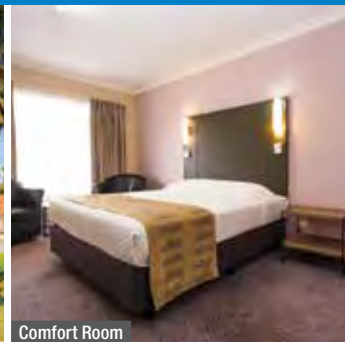
Max Capacity: Lakeside – 3, 2 Bedroom Chalet – 4, 3 Bedroom Chalet – 7.

[^]Price applies Sun-Thu nights.

Internet and mobile phone reception may be limited on some networks.



SLEEPWELL MOTEL ALBANY



Comfort Room

270 Albany Highway, Albany
MAP PAGE 32

From **\$146***

- ❖ Comfortable accommodation close to the town centre
- ❖ Great for families with children's playground, tennis court and indoor heated pool

Location: A four minute drive to Albany town centre. Distances: Town Centre 2.3km, Beach 4.6km.

Property Features: Pool (heated indoor), Spa, Tennis court, Barbecue, Restaurant, Bar, Room service, Guest laundry, Parking (outdoor – free), Non smoking, 60 rooms.

Room Features: Air-conditioning, Mini refrigerator, Tea/coffee making facilities, In-house movies, Ironing facilities (Family Rooms), Free Wi-Fi (Family Rooms).

Max Capacity: Comfort Room – 3, Family Room – 4.

Prices for room and continental breakfast also available.



HOSPITALITY ESPERANCE, SURESTAY COLLECTION BY BEST WESTERN



Queen Motel

44 The Esplanade, Esperance
MAP PAGE 32

From **\$159***

- ❖ Spacious, well-appointed motel and executive rooms
- ❖ Outdoor swimming pool with guest barbecue facilities
- ❖ Restaurant and bar have a children's menu and are open daily

Includes continental breakfast daily.

Location: Opposite Esperance Bay in the heart of Esperance. Distances: Town centre 50m, Beach 50m.

Property Features: Pool, Restaurant, Bar, Room service, Guest laundry, Parking (free), 50 rooms.

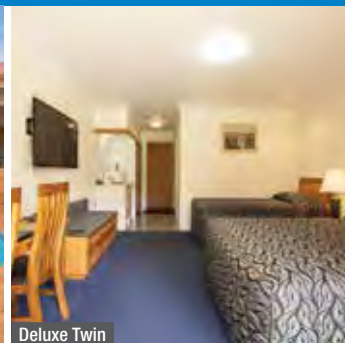
Room Features: Air-conditioning, Tea/coffee making facilities, Mini bar, Cable TV, Ironing facilities, Hair dryer, Non smoking.

Max Capacity: Queen Motel/Executive Queen/Executive King – 2, Queen + Single Motel – 3.

Prices for room and full breakfast also available.



COMFORT INN BAY OF ISLES, ESPERANCE



Deluxe Twin

32 The Esplanade, Esperance
MAP PAGE 32

From **\$179***

- ❖ Outdoor pool with barbecue area
- ❖ Enjoy 20 Foxtel channels and free to air channels on 50 inch plasma TVs
- ❖ Eljay's restaurant opens for breakfast and dinner Monday to Saturday

Location: On the esplanade across the road from the beach and close to all local attractions. Distances: Town centre 250m, Beach across the road.

Property Features: Pool, Restaurant, Bar, Room service, Barbecue area, Children's playground, Guest laundry, Tesla charging station, 62 rooms.

Room Features: Air-conditioning, Tea/coffee making facilities, Mini bar, Cable TV, Hair dryer, Safe.

Max Capacity: Executive/Executive Twin/Spa – 2, Deluxe Twin – 3, Family – 4.





Monkey Mia

Courtesy of Tourism Western Australia



CORAL COAST

Pristine beaches, clear blue water and incredible wildlife interactions – it’s all here on the Coral Coast. From Cervantes to Exmouth, there is an adventure for everyone. View dolphins, sea turtles, manta rays and Whale sharks in the World Heritage Listed Ningaloo Reef. See the local Bottlenose dolphins feeding in the shallow waters of Monkey Mia. Discover the Shark Bay World Heritage Area with its white sand beaches and ochre coloured sand dunes. Explore Kalbarri, one of Western Australia’s favourite national parks for wildflowers. Be sure to take a look through the red rock frame known as Nature’s Window.

SEE

- During July to October, admire the impressive wildflower displays in Kalbarri National Park

DO

- Travel to Nambung National Park and walk between the amazing limestone pillars known as The Pinnacles
- Don’t miss the once-in-a-lifetime experience of swimming with the gentle giants of the sea – the whale shark – at Ningaloo Reef

EAT & DRINK

- Enjoy fish and chips as you watch the sunset over the Indian Ocean at Coral Bay

WHAT’S ON

Whale Shark Season, Exmouth
Mid March to September

Mullewa Muster and Rodeo
1 June

REF.	APARTMENTS	PAGE
1	Kalbarri Edge Resort	39
2	Nesuto Geraldton Apartment Hotel	39
3	RAC Exmouth Cape Holiday Park	41

REF.	HOTELS	PAGE
4	Hospitality Carnarvon, SureStay Collection by Best Western	39
2	Hospitality Geraldton, SureStay Collection by Best Western	39
3	Mantarays Ningaloo Beach Resort, Exmouth	41
3	Potshot Hotel Resort, Exmouth	41
5	RAC Monkey Mia Dolphin Resort	40
6	Sal Salis Ningaloo Reef	40



Nature's Window, Kalbarri National Park

Courtesy of Tourism Western Australia

CORAL COAST TOURS



DIDGERIDOO DREAMING NIGHT TOUR

Enjoy an evening adventure under a sky of magnificent stars and delight in fresh seafood or bush tucker cooked on a campfire. Learn about local Aboriginal culture and history and lose yourself in the stories of the Dreamtime.

Includes:

- Tasting of seafood or bush tucker
- Local Aboriginal culture and history
- Didgeridoo (men) and conch shell (women) lesson
- Spotlighting for native animals

Operator: Wula Gura Nyinda

Duration: 2 hours

Departs: Daily from Little Lagoon near Denham at 7pm or RAC Monkey Mia Dolphin Resort at 7:30pm

	Adult	Child 3-15 yrs
Night Tour	\$90* [^]	\$50* [^]

[^]Minimum 10 people required for tour to operate.



OUTER REEF OR ISLAND SNORKEL

Snorkel the Muiron Islands or Outer Reef, exploring sites only accessible by boat. Search for wildlife from the viewing deck, such as dolphins, manta rays and turtles. Enjoy two reef snorkels amongst the colourful corals and fish.

Includes:

- Use of snorkelling equipment
- Expert guide
- Lunch and refreshments
- Return transfers from Exmouth accommodation

Operator: Exmouth Dive & Whalesharks Ningaloo

Duration: 8 hours

Departs: Daily from Exmouth at 7:30am (Mar – Nov)

Family prices also available. Not suitable for children under 6 yrs. Diving option also available. Divers must present open water diver certification card or must have dived within the last 12 months.

	Adult	Child 6-16 yrs
Full Day Tour	\$240*	\$155*



MAXIMUM GROUP SIZE
8

TOP OF THE RANGE SAFARI

This unique outback safari experience is an exciting one day tour of the World Heritage Listed Cape Range National Park and Ningaloo Marine Park. Experience rugged canyon country, beautiful beaches and an exclusive Yardie Creek boat tour. Relive the history of the North West Cape with local guides who have extensive knowledge of the area's natural beauty.

Includes:

- Exclusive boat cruise on Yardie Creek
- Use of snorkelling equipment
- Morning tea • Lunch
- Transport by air-conditioned 4WD
- Return transfers from Exmouth accommodation

Operator: Ningaloo Safari Tours

Duration: 7 hours 30 minutes

Departs: Daily from Exmouth at 9am

	Adult	Child 4-12 yrs
Full Day Tour	\$250* [^]	\$190* [^]

[^]Minimum 4 people required for tour to operate.



DELUXE HUMPBACK WHALE TOUR

Cruise to a snorkel site on the Ningaloo Reef to see beautiful corals and colourful fish, even catch sightings of turtles and dugongs! Then venture out to see the Humpback whales, with the unique opportunity to swim with these gentle giants.

Includes:

- Observe or swim with whales
- Use of snorkelling equipment (snorkeller option)
- Expert guide • Lunch and refreshments
- Return transfers from Exmouth accommodation

Operator: Exmouth Dive & Whalesharks Ningaloo

Duration: 8 hours

Departs: Daily from Exmouth at 7am (Aug – Oct)

Family prices also available. Not suitable for children under 6 yrs.

	Adult	Child 6-16 yrs
Observer	\$235*	\$170*
Snorkeller	\$550*	\$525* [^]

[^]Not suitable for children under 13 yrs.



DELUXE WHALE SHARK ADVENTURE

Enjoy a day of fun on Ningaloo Reef observing or swimming with the Whale shark. Spotter planes are used to maximise your time with these gentle giants. You may also see Manta Rays, Dugongs and dolphins.

Includes:

- Guided snorkel on Ningaloo Reef (Snorkeller option)
- Use of snorkelling equipment (Snorkeller option)
- Marine biology presentation
- Buffet lunch, refreshments, morning and afternoon tea
- Souvenir video and photos
- Return transfers from Exmouth accommodation

Operator: Exmouth Dive & Whalesharks Ningaloo

Duration: 8 hours

Departs: Daily from Exmouth at 7am (Mar – mid Aug)

Family prices also available. Not suitable for children under 6 yrs.

	Adult	Child 6-16 yrs
Observer	\$299*	\$299*
Snorkeller	\$550*	\$410*



MAXIMUM GROUP SIZE
18

A DAY AT DIRK

Spend the day at Dirk Hartog Island and discover the natural beauty of Western Australia's largest island. After morning tea at a beachside café, join a 4WD tour of the rugged coastal cliffs and giant blowholes. Visit a calm marine sanctuary to look for dolphins, sharks, turtles and stingrays, followed by a seafood barbecue lunch and a gin tasting. The afternoon is free to relax or try standup paddle boarding or kayaking.

Includes:

- Return boat transfer from Denham
- Morning tea • Seafood lunch
- 4WD adventure • Gin tasting

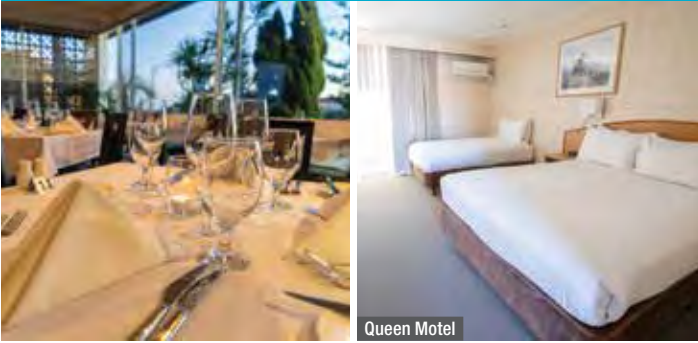
Operator: Dirk Hartog Island

Duration: 9 hours

Departs: Tue to Sun from Denham Commercial Jetty at 8:30am or RAC Monkey Mia Dolphin Resort at 7:45am (Apr – Nov)

	Adult	Child 3-15 yrs
Day Tour	\$300*	\$235*

HOSPITALITY GERALDTON, SURESTAY COLLECTION BY BEST WESTERN ♦♦♦♦



169 Cathedral Avenue, Geraldton
MAP PAGE 37

From **\$170***

- ❖ Spacious and well-appointed motel and executive rooms
- ❖ Restaurant and bar have a children's menu and are open daily
- ❖ Outdoor swimming pool with guest barbecue facilities

Includes continental breakfast daily.

Location: A 15 minute walk or three minute drive to the city centre, shops and local attractions. Distances: Beach 1km, Town centre 1.2km.

Property Features: Pool (outdoor), Restaurant, Bar, Room service, Guest laundry (free), Parking (free), 50 rooms.

Room Features: Air-conditioning, Tea/coffee making facilities, Mini bar, Cable TV, Ironing facilities, Hair dryer, All rooms non smoking.

Max Capacity: Queen Motel/Premium Queen – 3, Queen Executive/King Executive – 2.

Prices for room and full breakfast also available.



NESUTO GERALDTON APARTMENT HOTEL ♦♦♦♦



298 Chapman Road, Geraldton
MAP PAGE 37

From **\$213***

- ❖ Spacious and stylish, well equipped self-contained accommodation
- ❖ Outdoor pool and hot tub with poolside loungers perfect for relaxation
- ❖ A family and pet friendly property

Location: Ideally situated just metres from the picturesque Champion Bay and within walking distance to the marina and town centre. Distances: Town Centre 3km, Beach 500m.

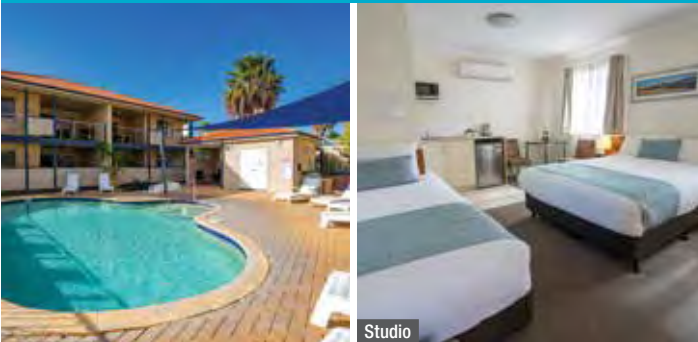
Property Features: Pool, Spa, Breakfast lounge, Barbecues, Guest laundry, Parking, 81 rooms.

Room Features: Air-conditioning, Limited cooking facilities with microwave (Studio), Kitchen and laundry facilities (1, 2 and 3 Bedroom), Tea/coffee making facilities, Cable TV, DVD player, Hair dryer, Safe.

Max Capacity: Studio/Premier Studio/1 Bedroom – 2, 2 Bedroom – 4, 3 Bedroom – 6.



KALBARRI EDGE RESORT ♦♦♦♦



22 Porter Street, Kalbarri
MAP PAGE 37

From **\$199***

- ❖ On-site restaurant open for breakfast and dinner Monday to Saturday
- ❖ Families will love the barbecue area and the giant chess set
- ❖ Choose a spa apartment for the ultimate relaxation after sightseeing

Location: A five minute walk to the downtown area, close to the beach and 400 metres to the river. Distances: Town centre 150m, Beach 550m.

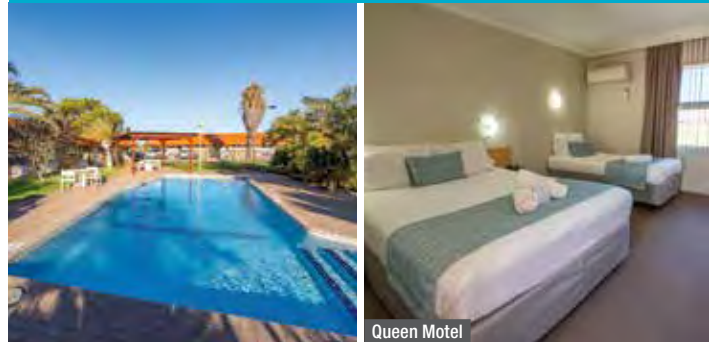
Property Features: Pool, Restaurant, Bar, Barbecue area, Guest laundry, Non smoking, Parking (free), 76 rooms.

Room Features: Air-conditioning, Patio (1 and 2 Bedroom), Tea/coffee making facilities, Limited cooking facilities, Microwave, Dishwasher (1 and 2 Bedroom), Barbecue (1 and 2 Bedroom), Cable TV, Ironing facilities, Washer/dryer (1 and 2 Bedroom), Hair dryer, Spa bath (1 and 2 Bedroom).

Max Capacity: Studio – 3, 1 Bedroom Spa – 2, 2 Bedroom Spa – 5.



HOSPITALITY CARNARVON, SURESTAY COLLECTION BY BEST WESTERN ♦♦♦♦



6 West Street, Carnarvon
MAP PAGE 37

From **\$159***

- ❖ Outdoor swimming pool with guest barbecue facilities
- ❖ On-site restaurant and bar offer a children's menu
- ❖ Spacious, good value rooms with all the creature comforts you need

Includes continental breakfast daily.

Location: Adjacent to the Gascoyne River and Fascine Boardwalk and playground. Distances: Town centre 800m, Beach 200m.

Property Features: Pool, Restaurant, Bar, Room service, Barbecue area, Guest laundry (free), Parking (free), 45 rooms.

Room Features: Air-conditioning, Mini bar, Tea/coffee making facilities, Cable TV, Ironing facilities, Hair dryer, All rooms non smoking.

Max Capacity: Queen Motel – 3, Executive Queen/Executive King – 2, Family Room – 4.

Prices for room and full breakfast also available.



CORAL COAST ACCOMMODATION

RAC MONKEY MIA DOLPHIN RESORT



Garden View



Superior Beach View

1 Monkey Mia Road, Monkey Mia
MAP PAGE 37

From **\$262***

- ❖ Set within the Shark Bay World Heritage Listed Area
- ❖ Families will love the convenience of direct beach access from the resort
- ❖ Daily dolphin feeding and interaction

Location: Situated on the white sand beach of Shark Bay. Distances: Town centre 25km, Beachfront.

Property Features: Pools (2 – including children's), Restaurant, Bar, General store, Camp kitchen, Children's playground, Mini golf, Guest laundry, 160 rooms.

Room Features: Air-conditioning, Balcony (Beach View, Superior Beach View), Tea/coffee making facilities, In-room movies (free), Hair dryer.

Max Capacity: Garden View – 4, Beach View – 2, Superior Beach View – 3, Family Studio – 5.

A Monkey Mia Conservation Park Pass is required to enter the Park and is not included in the accommodation price. Refer to Travel Tips on page 7 for information on park fees and how to purchase passes.



SAL SALIS NINGALOO REEF



Wilderness Tent



Wilderness Tent

Yardie Creek Road, Cape Range National Park, via Exmouth
MAP PAGE 37

From **\$1790*^**

- ❖ Off-grid safari camp nestled in the sand dunes of Cape Range National Park
- ❖ Uninterrupted coastal and night sky views of Ningaloo Reef from tent
- ❖ Fall asleep to the sounds of waves on the beach

Includes chef-prepared meals and bar featuring local beer, wine and spirits.

Location: Located on the North West Cape, just an hour's drive south of Exmouth. Distances: Town centre 215km, Beachfront.

Getting There: 75 minute scheduled coach transfer to/from Learmonth Airport, Exmouth. **\$150*** per person one way. Transfers must be booked with accommodation.

Property Features: Guest lounge, Chef-prepared meals, Guided walks, Kayaking, Snorkelling, Library, Self-service bar, 16 tents.

Room Features: King or twin beds, Shaded deck, Private eco en suite, Hammock.

Max Capacity: Wilderness Tent/Honeymoon Tent – 2 adults/1 child.

^ Minimum 2 night stay applies. Children under 10 not permitted.

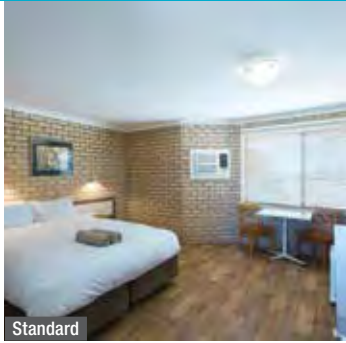
Due to seasonal weather conditions in the Exmouth region, Sal Salis is closed between November 2024 and February 2025.

ALL INCLUSIVE



* FROM PRICES ARE A GUIDE ONLY, subject to change and availability and are in Australian Dollars. Prices are per room per night for 2 people, unless otherwise specified and based on the lowest room category for travel in low season. For full terms and conditions, refer to the Booking Conditions on the inside back cover of this brochure.

POTSHOT HOTEL RESORT, EXMOUTH



Standard

561 Murat Road, Exmouth
MAP PAGE 37

From **\$165***

- ❖ Large lagoon-style pool
- ❖ Choose from motel-style rooms or two bedroom apartments
- ❖ Huge outdoor area with barbecue facilities

Location: Within easy walking distance to shops, restaurants and bars. Distances: Town centre 500m, Beach 3km.

Property Features: Wi-Fi (common areas – extra charge), Pools (2), Barbecue area, Restaurant, Bars (3), Guest laundry, 125 rooms.

Room Features: Air-conditioning, Limited cooking facilities (2 Bedroom Apartment), Tea/coffee making facilities, Mini refrigerator (Budget/Standard Rooms), Hair dryer (Standard Room).

Max Capacity: Budget/Standard – 2, 2 Bedroom Apartment – 4.



RAC EXMOUTH CAPE HOLIDAY PARK



3 Truscott Crescent, Exmouth
MAP PAGE 37

From **\$155***

- ❖ Self-contained cabins and motel style rooms
- ❖ Great location for family and couple getaways
- ❖ Lagoon pool with barbecue facilities and sun lounges

Location: Just a 20 minute walk to the town centre and a 10 minute walk to the beach. Distances: Town centre 1.4km, Beach 1.8km.

Property Features: Pools (2), Children's playground, Recreation room, Barbecue area, Shop, Guest laundry, Parking (free), 159 rooms.

Room Features: Air-conditioning, Tea/coffee making facilities, Limited cooking facilities with microwave, Hair dryer.

Max Capacity: Blue Reef Motel/Blue Reef Studio/1 Bedroom Cabin – 2, 2 Bedroom Cabin – 5, 2 Bedroom Pool View Cabin – 6.



MANTARAYS NINGALOO BEACH RESORT, EXMOUTH



Standard

Madaffari Drive, Exmouth
MAP PAGE 37

From **\$370***

- ❖ Comfortable, spacious rooms, some with spa baths
- ❖ Furnished balconies have views of either the marina or ocean
- ❖ Between August and November spot humpback whales in the calm waters

Location: Nestled on Sunrise Beach and the gateway to Ningaloo Reef, where whale sharks swim (Mar to Aug). Distances: Town centre 5km, Beachfront.

Property Features: Pool (resort style), Restaurant, Bar, Convenience store, Room service, Gym, Guest laundry, Parking (free), 68 rooms.

Room Features: Air-conditioning, Balcony, Tea/coffee making facilities, Kitchen (2 Bedroom), DVD player, Cable TV, Ironing facilities, Hair dryer.

Max Capacity: Standard/Superior/Superior Ocean View/1 Bedroom Apartment/1 Bedroom Bungalow – 2, 2 Bedroom Apartment/2 Bedroom Apartment Ocean View/2 Bedroom Bungalow – 4.



2 Bedroom Apartment





Cable Beach, Broome

BROOME & THE KIMBERLEY

It's easy to be captivated by the laidback seaside town of Broome. The breathtaking beaches, fascinating history and relaxed atmosphere are major drawcards. Watch a Broome sunset from atop a camel, purchase a beautiful pearl and during the full moon witness the natural phenomenon of the Staircase to the Moon. Kununurra boasts clear blue skies, rich red earth and rugged vistas. Explore Purnululu National Park, journey down dirt tracks and revel in spectacular waterfalls and gorges. Get a taste for the real Kimberley with a stay at one of the wilderness lodges dotted throughout the region.

SEE

- See the tracks of up to seven different dinosaur species between Gantheaume Point, at the southern end of Cable Beach, and James Price Point

DO

- For the ultimate Kimberley adventure, sleep overnight at Horizontal Falls onboard the luxurious Jetwave Pearl (see page 45)

EAT & DRINK

- Try a tasting paddle of uniquely Western Australian craft beers at Spinifex Brewing Co, Cable Beach

WHAT'S ON

Staircase to the Moon, Broome

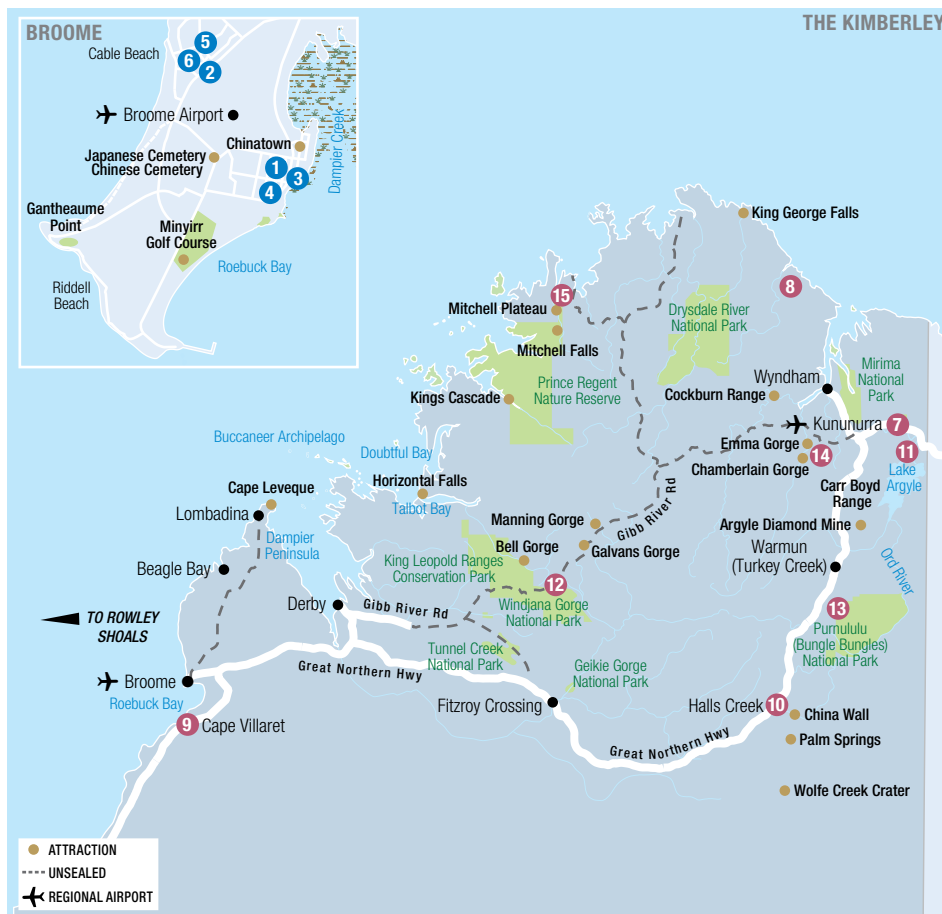
25 to 27 April, 24 to 26 May, 23 to 25 June, 22 to 24 July, 20 to 22 August, 18 to 20 September, 17 to 19 October, 16 to 17 November

Kimberley Cup, Broome

10 August

Shinju Matsuri Festival of the Pearl, Broome

17 August to 1 September



BROOME

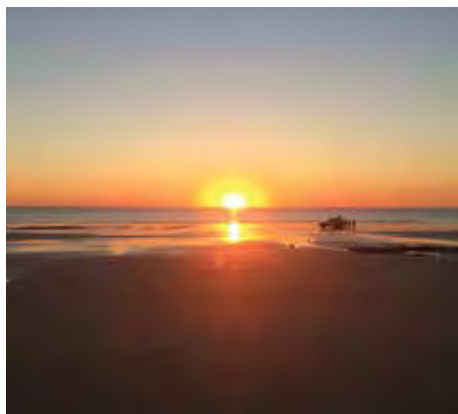
REF.	APARTMENTS	PAGE
1	Bayside Holiday Apartments	49
2	Blue Seas Resort	49
3	Moonlight Bay Suites	49
4	Oaks Broome Hotel	50
5	Oaks Cable Beach Resort	49
6	Seashells Broome	50

THE KIMBERLEY

REF.	APARTMENTS	PAGE
7	Freshwater East Kimberley Apartments, Kununurra	52

REF.	HOTELS	PAGE
8	The Berkeley River Lodge, East Kimberley	51
9	Eco Beach Wilderness Retreat, Cape Villaret	51
10	Kimberley Hotel, Halls Creek	51
7	Kununurra Country Club Resort	52
7	Discovery Parks – Lake Kununurra	52
11	Discovery Resorts – Lake Argyle	52

REF.	STATIONS & CAMPS	PAGE
12	Bell Gorge Wilderness Lodge	53
13	Bungle Bungle Wilderness Lodge	53
14	El Questro – Emma Gorge	54
14	El Questro Homestead	54
14	El Questro – The Station	54
15	Mitchell Falls Wilderness Lodge	53



BROOME TOWN TOUR WITH CABLE BEACH & SUNSET

Discover the best of Broome. Visit Chinatown, Sun Pictures and Willie Creek Pearl Luggers. Enjoy a beer tasting at a local Broome brewery. Stop at Gantheaume Point, then enjoy a brief visit to picturesque Cable Beach before continuing on to Gantheaume Beach for sunset, wine and nibbles.

Includes:

- Pearl Shop visit
- Light refreshments and nibbles at sunset
- Local Broome brewery tasting • Expert guide
- Return transfers from selected Broome accommodation

Operator: Australian Pinnacle Tours

Duration: 6 hours

Departs: Tue, Thu, Sun from Broome at 12:30pm (May – Sep)

	Adult	Child 4-12 yrs
Half Day Tour	\$108*	\$63*



WILLIE CREEK PEARL FARM

Willie Creek Pearls is a West Australian family business that sustainably produces the best pearls in the world: Australian South Sea Pearls. This tour offers a unique insight into the fascinating process of modern pearl farming. Discover what makes the perfect pearl while becoming a pearling expert!

Includes:

- Pearl Farm tour
- Jewellery showroom visit
- Willie Creek boat cruise
- Pearl masterclass including a live pearl harvest
- Morning or afternoon tea • Souvenir guide
- Return transfers from Broome accommodation

Operator: Willie Creek Pearl Farm

Duration: 5 hours

Departs: Daily from Broome at 8:45am, 10:15am, 1pm

	Adult	Child 6-15 yrs
Half Day Tour	\$149*	\$85*



DAMPIER PENINSULA & ABORIGINAL COMMUNITIES

Travel over rugged terrain to Beagle Bay Aboriginal Community. Visit the Sacred Heart Church before heading to One Arm Point. Enjoy a guided visit to the trochus hatchery and learn about the Bardi Jawis' strong connection to their culture and saltwater traditions. Visit Cygnet Bay Pearl Farm followed by a tour of the farm.

Includes:

- Visit Beagle Bay Aboriginal Community
- Cygnet Bay Pearl Farm Tour • Lunch and afternoon tea
- Transport by air-conditioned coach
- Return transfers from selected Broome accommodation

Operator: Australian Pinnacle Tours

Duration: 12 hours 30 minutes

Departs: Mon, Wed, Fri from Broome at 7am

	Adult	Child 4-12 yrs
Full Day Tour	\$344*	\$229*



WINDJANA GORGE & TUNNEL CREEK

Visit Willare Roadhouse on the mighty Fitzroy River, Myalls Bore and the notorious Derby 'Boab Prison Tree'. Join the Gibb River Road and travel towards Napier Range. Experience the stunning natural beauty of Windjana Gorge. After a picnic lunch, explore Tunnel Creek, a 750 metre cave system. Learn the legend of Jandamarra and swim in the idyllic waterhole before returning to Broome.

Includes:

- Boab Prison Tree • Windjana Gorge
- Tunnel Creek • Morning and afternoon tea • Lunch
- Return transfers from selected Broome accommodation

Operator: Kimberley Wild Expeditions

Duration: 14 hours

Departs: Mon, Wed, Fri from Broome at 6am (May – Oct)

	Adult	Child 4-12 yrs
Full Day Tour	\$299*	\$199*



DAMPIER PENINSULA

Travel to the Beagle Bay Aboriginal Community, home to the Sacred Heart Church and its glimmering pearl shell altar. Visit Cygnet Bay Pearl Farm for a guided tour and lunch, then head to the One Arm Point Aboriginal Community and Aquaculture Centre, on the tip of One Arm Point overlooking the Buccaneer Archipelago.

Includes:

- Cygnet Bay Pearl Farm Tour
- Visit Beagle Bay Aboriginal Church
- Guided tour of hatchery & Aquaculture Centre
- Morning and afternoon tea • Lunch
- Return transfers from selected Broome accommodation

Operator: Kimberley Wild Expeditions

Duration: 12 hours

Departs: Sun to Fri from Broome at 6am (Apr – Oct)

Price for return flight option and 2 Day Tour also available.

	Adult	Child 4-12 yrs
Full Day Tour	\$289*	\$189*



CYGNET BAY & SEA SAFARI

Experience all the Dampier Peninsula has to offer. Enjoy morning tea in the Beagle Bay Aboriginal Community and learn about the history of the world's finest pearls at Cygnet Bay Pearl Farm. In the afternoon, cruise through the Sunday Island group of the Buccaneer Archipelago.

Includes:

- Visit to Beagle Bay Aboriginal Community Church
- Cygnet Bay Pearl Farm Tour
- Sea Safari: Giant Tides Cruise or Island Explorer+
- Morning tea, lunch and afternoon tea
- Experienced Guide
- Transport by air-conditioned 4WD truck

Operator: Kimberley Wild Expeditions

Duration: 12 hours

Departs: Sun to Fri from Broome at 6am (Apr – Oct)

Price for return flight option also available. *Dependent on tide.

	Adult	Child 4-12 yrs
Full Day Tour	\$549*	\$449*

BROOME & THE KIMBERLEY TOURS



BUNGLE BUNGLE ADVENTURER

This scenic flight from Kununurra to the Bungle Bungles is an exhilarating way to take in the Kimberley's best icons in the comfort of an air-conditioned plane. Fly over Diversion Dam, Lake Kununurra, the Ord River Irrigation Area, Lake Argyle and the stunning Carr Boyd and Osmand Ranges. Soar over the iconic Bungle Bungles and circle the Argyle Diamond Mine on the return journey.

Includes:

- 2 hour scenic flight
- Informative commentary
- Cold bottled water and sweets
- Return transfers from Kununurra accommodation

Operator: Aviair

Duration: 2 hours

Departs: Daily from Kununurra Airport at 6am and 9am, 2:30pm (Apr – Aug)

	Adult	Child 2-12 yrs
Scenic Flight	\$495* [^]	\$475* [^]

[^]Price based on minimum 2 adults.



BUNGLE BUNGLE WANDERER

Enjoy a scenic flight from Kununurra to the Bungle Bungle Range, flying over the Ord River and Lake Argyle. Walk through the famous banded domes to stunning Cathedral Gorge for a picnic lunch. Also enjoy views of Carr Boyd Ranges, Osmand Ranges and the Bow River on this trip.

Includes:

- Scenic flight
- 4WD and walking tour in Purnululu National Park
- Informative commentary with an Aboriginal perspective
- Lunch • Snacks
- Return transfers from Kununurra accommodation

Operator: Aviair

Duration: 8 hours

Departs: Daily from Kununurra Airport at 9am (Apr – Aug), 6am (Sep)

	Adult	Child 2-12 yrs
Full Day Tour	\$949* [^]	\$769* [^]

[^]Price based on minimum 2 adults.



MITCHELL FALLS DISCOVERER

Fly from Kununurra enjoying stunning views over the coastline, the magnificent Berkeley River Gorge and King George Falls. Land at Mitchell Plateau Airstrip, transfer to a helicopter and fly to the start of the walk for a guided four and a half kilometre hike to Mitchell Falls (or transfer direct to the Falls by helicopter). Enjoy the view, a picnic lunch and swim, before a helicopter flight back to the airstrip. The return scenic flight to Kununurra flies over El Questro and the Cockburn Range.

Includes:

- Scenic fixed wing flight • Helicopter flight
- Guided hike • Snacks • Lunch • Visitor pass
- Return transfers from Kununurra accommodation

Operator: Aviair

Duration: 9 hours

Departs: Selected days from Kununurra Airport at 6am (May – Aug)

	Adult/Child
Full Day Tour	\$1779* [^]

[^]Price based on minimum 2 adults.



BUNGLE BUNGLE DOMES SPECIAL

The perfect option for a snapshot of the Bungle Bungle Range. The flight begins at Y Gorge before flying across the top of the enormous massif to the mouth of the spectacular Piccaninny Gorge. View the mouth of Cathedral Gorge and fly over the famous orange and black striped sandstone beehive shaped domes.

Includes:

- Scenic helicopter flight
- In-flight commentary
- Tea and coffee prior to departure

Operator: Helispirit

Duration: 18 minutes

Departs: On demand from Bellburn Airstrip (15 Apr – 15 Sep 24)

	Adult/Child
Scenic Flight	\$329* [^]

[^]Price based on minimum 2 adults.



BUNGLE BUNGLE & RED ROCK GORGES

View the hidden red rock gorges of the north-west tip of the Bungle Bungle Range, as well as Piccaninny Gorge from end to end, on this spectacular 30 minute scenic flight. Fly over the unique beehive shaped formations, the hero of Purnululu National Park, recognised internationally for their natural beauty and one of only 16 Natural World Heritage listed areas in Australia.

Includes:

- Scenic helicopter flight
- In-flight commentary
- Tea and coffee prior to departure

Operator: Helispirit

Duration: 30 minutes

Departs: On demand from Bellburn Airstrip (15 Apr – 15 Sep 24)

	Adult/Child
Scenic Flight	\$499* [^]

[^]Price based on minimum 2 adults.



KIMBERLEY DURACK CRUISE

Embark on a three hour lunch cruise aboard The Kimberley Durack, surrounded by the stunning beauty of Lake Argyle. Encounter incredible wildlife as you explore the bays and inlets and swim in the crystal-clear waters off a remote island. Explore the Main Ord Dam site and Ord River Gorge then return to Discovery Resorts - Lake Argyle.

Includes:

- Boat cruise • Fresh grazing style lunch
- Remote island swim stop
- Complimentary beer, wine and soft drink onboard
- Informative commentary from an experienced skipper
- Return transfers from Discovery Resorts - Lake Argyle

Operator: Discovery Resorts – Lake Argyle

Duration: 3 hours

Departs: Daily from Discovery Resorts – Lake Argyle at 10am (May – Aug), Wed to Sun (Mar, Apr, Sep, Oct)

	Adult	Child 3-16 yrs
Lunch Cruise	\$155*	\$92*

BROOME TO HORIZONTAL FALLS HALF DAY TOUR

Experience the incredible Horizontal Falls and pristine beauty of the Kimberley with a flexible half-day tour. Choose between a morning or afternoon departure.

Enjoy low level flying over the amazing islands of the Buccaneer Archipelago and Cape Leveque before the seaplane lands safely in the calm waters of Talbot Bay. The tour continues with a powerboat ride through the Horizontal Waterfalls and a relaxed island cruise, shark show and swim in the marine viewing platform.

Includes:

- Return scenic seaplane flight
- Powerboat ride through the Horizontal Falls
- Talbot Bay cruise
- Swim in the marine viewing platform
- Cooked breakfast or lunch
- Marine Park Fee
- Return transfers from Broome accommodation

Operator: Horizontal Falls Seaplane Adventures

Duration: 6 hours

Departs: Daily from Broome at 6am and 12 noon (Mar – Nov)

	Adult	Child 4-12 yrs
Morning Tour/ Afternoon Tour	\$1085*	\$935*

Not suitable for children under 4 yrs.



HORIZONTAL FALLS & DAMPIER PENINSULA FULL DAY TOUR

The only Horizontal Falls tour where you soar in a seaplane, cruise in a powerboat and trek across the Kimberley discovering its natural wonders. Fly over the amazing islands of the Buccaneer Archipelago, just one small part of the adventure learning about the Kimberley's rich Indigenous culture, land, and community at Ardyaloon Aquaculture Hatchery and Australia's oldest pearl farm in Cygnet Bay.

Includes:

- Return scenic seaplane flight
- Powerboat ride through the Horizontal Falls
- Talbot Bay cruise
- Ardyaloon Aquaculture Hatchery and Cygnet Bay Pearl Farm tour
- Swim in the marine viewing platform
- Cooked breakfast
- Barramundi lunch
- Marine Park Fee
- Return transfers from Broome accommodation

Operator: Horizontal Falls Seaplane Adventures

Duration: 10 hours 30 minutes

Departs: Daily from Broome at 5am (Apr – Nov)

	Adult	Child 4-12 yrs
Full Day Tour	\$1130*	\$955*

Not suitable for children under 4 yrs.



Premium Cabin



Main dining area

ULTIMATE HORIZONTAL FALLS LUXURY OVERNIGHT STAY

This 24-hour tour is your only chance to marvel at the changing directional tides of this sideways waterfall.

Enjoy 24 hours of pure excitement with numerous powerboat rides, a guided fishing charter and a relaxing cruise through the crystal blue waters of Talbot Bay and the ancient rock formations of Cyclone Creek.

Spend a night onboard the luxurious and newly refitted vessel, Jetwave Pearl which is an exclusive base for a maximum of 16 guests. Standard cabins are on upper or main deck and feature a double bed and private ensuite, while the premium cabins contain a queen size bed, private ensuite and balcony.

Cap off the day with the resident shark show and a cooling swim in the marine viewing platform. Savour sunset drinks and appetisers on the rooftop lounge or spacious decks before dining on the catch of the day and quality local produce.

Includes:

- 1 night accommodation onboard Jetwave Pearl
- Return scenic seaplane flight from Derby
- Powerboat rides through the Horizontal Falls
- Talbot Bay cruise
- Swim or snorkel in the marine viewing platform
- 1 breakfast, 1 lunch, 1 dinner
- Marine Park Fee
- Return transfers from Derby accommodation

Operator: Horizontal Falls Seaplane Adventures

Duration: 24 hours

Departs: Selected days from Derby at 8am (5 May – 21 Sep 24)

	Adult Twin Share	Adult Sole Use
Main Deck	\$1785*	\$2675*
Upper Deck	\$1935*	\$2900*
Premium	\$2095*	\$3140*

Not suitable for children under 4 yrs.

BROOME & THE KIMBERLEY TOURING



ALLURING LAKE ARGYLE 3 DAYS

Day 1: Kununurra to Lake Argyle (D) Be transferred on arrival at Kununurra Airport to Discovery Resorts – Lake Argyle. Settle into your room, explore and enjoy stunning vistas of the expansive lake. Late afternoon, head to the infinity pool lookout and marvel at a breathtaking Kimberley sunset. Enjoy a dinner showcasing local seasonal produce in the outdoor dining area. Spend the next two nights at Discovery Resorts – Lake Argyle.

Day 2: Lake Argyle (BLD) Enjoy a continental breakfast at your leisure. Mid morning, embark on a cruise of Lake Argyle aboard Kimberley Durack. Sail through the pristine lake waters and take in the captivating scenery.

Delight in a fresh grazing-style lunch while onboard before taking a refreshing swim at a remote island stop. The afternoon is free to relax or take a dip in the stunning infinity pool, before a leisurely dinner.

Day 3: Lake Argyle (B) Take in the serene ambience of the resort while enjoying breakfast. Check out of your accommodation and be transferred to Kununurra for your onward journey.

(B = breakfast, L = lunch, D = dinner)

From **\$740*** per person twin share

3 DAYS | KUNUNURRA TO KUNUNURRA

OPERATOR: Discovery Resorts

TRAVEL TYPE: Independent

DEPARTS: Mondays (May – Aug)

HIGHLIGHTS

- Enjoy stunning vistas of beautiful Lake Argyle
- Take in a Kimberley sunset from the infinity pool lookout
- Explore Lake Argyle by boat

INCLUDES

- 2 nights accommodation at Discovery Resorts – Lake Argyle in a Deluxe Studio Cabin
- Meals as specified
- Kimberley Durack Lunch Cruise on Lake Argyle
- Return transfers from Kununurra Airport or accommodation

Self drive option also available, Tue to Sat (Apr – Oct 24, Mar 25)



EL QUESTRO ESCAPE 4 DAYS

Day 1: Kununurra to El Questro – Emma Gorge (D) Your journey begins with a scheduled transfer along the scenic Gibb River Road to El Questro - Emma Gorge. On arrival, settle into your safari style, tented cabin. Tonight, enjoy a two-course dinner at Emma's Restaurant. Stay the next three nights at El Questro - Emma Gorge.

Day 2: El Questro – Emma Gorge (BLD) After a restful sleep, awake to birdsong and a hearty breakfast. Conquer the Emma Gorge hike, amid red cliffs and crystal-clear pools. Indulge in a leisurely lunch at Emma's, then join a guided sunset experience. This evening, enjoy a buffet dinner in the restaurant, before retreating to your tented cabin.

Day 3: El Questro – Emma Gorge (BLD) After breakfast, travel to El Questro Gorge and embark on the guided hike to the half-way pools. Unwind at Zebedee Springs, a cascading thermal pool situated among sky-high palm trees. Return for lunch at El Questro Station and then join the Chamberlain Gorge Cruise. Take in the scenery while enjoying a glass of sparkling wine. End the day with dinner at Emma Gorge.

Day 4: El Questro – Emma Gorge To Kununurra (B) Enjoy breakfast before your scheduled transfer to Kununurra.

(B = breakfast, L = lunch, D = dinner)

From **\$2061*** per person twin share

4 DAYS | KUNUNURRA TO KUNUNURRA

OPERATOR: Discovery Parks

TRAVEL TYPE: Independent

DEPARTS: Sun, Tue, Thu (May – Sep)

HIGHLIGHTS

- Hike Emma Gorge
- Take a rejuvenating dip in Zebedee Springs
- Admire the stunning scenery on a Chamberlain Gorge cruise

INCLUDES

- 3 nights accommodation at El Questro – Emma Gorge in a Tented Cabin with private en suite
- Meals as specified
- Emma Gorge Walk
- Sunset Experience at Emma Gorge
- El Questro Gorge and Zebedee Springs
- Chamberlain Gorge Cruise
- Return scheduled transfers from Kununurra Airport or accommodation



BROOME TO THE BUNGLER BUNGLES 5 DAYS

Day 1: Broome to Fitzroy Crossing (LD) Travel by coach towards Fitzroy Crossing. Visit Old Fitzroy Crossing and the Mangkaja Aboriginal Arts Centre before joining a guided walk with a local elder. Overnight at Fitzroy River Lodge.

Day 2: Fitzroy Crossing to Purnululu National Park (BLD) Visit Halls Creek and the China Wall en route to Purnululu National Park. Spend the next two nights at the Bungle Bungles Safari Camp.

Day 3: Purnululu National Park (BLD) Enjoy the day at leisure exploring the park.

Day 4: Purnululu National Park to Fitzroy Crossing (BL)

Travel to the Mimbi Caves and share fresh damper and billy tea with the traditional owners. Overnight at Fitzroy River Lodge.

Day 5: Fitzroy Crossing to Broome (BL) Head to Bunuba country to see Tunnel Creek, a 750 metre cave system. Swim in the idyllic waterhole before travelling to the geological wonder of Windjana Gorge. Return to Broome from Gibb River Road, where your tour concludes.

(B = breakfast, L = lunch, D = dinner)

From **\$2045*** per person twin share

5 DAYS | BROOME TO BROOME

OPERATOR: Kimberley Wild Expeditions

TRAVEL TYPE: Escorted coach

DEPARTS: Tuesdays (May – Sep)

HIGHLIGHTS

- Enjoy a guided walk with a local elder
- Visit the gold rush town of Halls Creek
- Marvel at the Bungle Bungle Domes

INCLUDES

- 4 nights camping accommodation
- Meals as specified
- Expert guide
- Mimbi Caves guided tour
- Transport by air-conditioned 4WD vehicle
- National park fees
- Return transfers from selected Broome accommodation

Child prices also available.



Windjana Gorge



Purnululu National Park

WILD KIMBERLEY LOOP 11 DAYS

Day 1: Broome via Tunnel Creek to Windjana Gorge (LD)

Travel by coach through the remote and beautiful Kimberley landscape, enjoying stories of local history, people and the environment from your guide. Stop for morning tea by the Fitzroy River and visit the Derby Boab Prison Tree before hitting the Gibb River Road. The afternoon is devoted to exploring Tunnel Creek. In this 750 metre cave system carved through the Napier Range, discover stalactites, secret caves and a large variety of wildlife. Learn about the legend of Jandamarra, an Aboriginal freedom fighter who used the tunnel as a hide-out in the late 1800s. Tonight, camp under the Kimberley night sky. Overnight at Windjana Gorge.

Day 2: Windjana Gorge via Bell Gorge to Mt Barnett (BLD)

The Napier Range is over 350 million years old and home to the geological wonder of Windjana Gorge. Spend the morning searching for freshwater crocodiles, local birdlife and indigenous bush tucker. In the afternoon continue to Bell Gorge, an idyllic retreat which boasts cascading waterfalls and crystal clear pools formed over millions of years. Spend the next two nights at Mt Barnett Cattle Station.

Day 3: Galvans Gorge, Adcock Gorge & Mt Barnett Station (BLD)

Spend the day swimming in paradise. Further up the Gibb River Road, discover the cool waters of Galvans Gorge and Adcock Gorge. Amid the rugged beauty of Manning Falls, swim in deep clear pools, relax, explore wandering streams, uncover local wildlife and take a dip in the waterfall pools.

Day 4: Mt Barnett to El Questro Wilderness Park (BLD)

Journey up the Gibb River Road to iconic El Questro Wilderness Park. Take a refreshing dip in Zebedee Springs, walk into Emma Gorge and enjoy a cruise on Chamberlain Gorge (extra charge). Spend the next two nights at El Questro Wilderness Park.

Day 5: El Questro Wilderness Park (BL)

Today is free to relax.

Day 6: El Questro Wilderness Park via Kununurra to Lake Argyle (BD)

Leave the Gibb River Road and travel to Kununurra, where you will have some free time. Sample locally-made rum at the Hoochery and pick up some local sandalwood inspired beauty, health and lifestyle products at the Sandalwood Factory. In the afternoon, travel onto the shores of the expansive Lake Argyle, the heart of the Ord River Irrigation System. Stay two nights at Discovery Resorts – Lake Argyle.

Day 7: Lake Argyle (BL)

Today is free to enjoy Lake Argyle. Enjoy a refreshing afternoon swim in the Infinity Pool, with a magnificent view across the lake, and take up one of the many optional activities on offer such as scenic flights and kayak hire. You may like to join your guide to visit the historic Durack Homestead Museum (extra charge) or take on one of the many bush trails to explore the area.

A sunset boat cruise on the lake (extra charge) is highly recommended.

Day 8: Lake Argyle to Purnululu National Park (BLD)

After a leisurely morning, head south along the Great Northern Highway to Purnululu National Park. Spend the next two nights at the private Bungle Bungles Safari Camp.

Day 9: Purnululu National Park (BLD)

Discover the highlights of this extraordinary national park, the most famous being the Bungle Bungle Range. Explore Echidna Chasm, known for its towering Livistonia Palm trees, and take a two to three kilometre walk into stunning Cathedral Gorge, where towering rocks create a natural amphitheatre. Optional activities include a scenic flight over the beehive domes (extra charge).

Day 10: Purnululu National Park to Fitzroy Crossing (BLD)

Travel to Fitzroy Crossing today, stopping at the gold rush town of Halls Creek to see the remarkable China Wall. Enjoy lunch at Mary Pool and visit the remote Laarri Aboriginal Art Gallery. Overnight at Fitzroy River Lodge.

Day 11: Fitzroy Crossing to Broome (BL)

Learn about nearby Geikie Gorge from both an environmental and cultural perspective. Nature carved this wonder through the Geikie and Oscar Ranges during the Devonian geological period. Learn of the gorge's geology and array of wildlife. Explore Old Fitzroy Crossing and enjoy lunch by the river. Continue to Broome where you might see a stunning sunset over Cable Beach. The tour concludes on arrival in Broome.

(B = breakfast, L = lunch, D = dinner)

From **\$4195*** per person twin share



11 DAYS | BROOME TO BROOME

OPERATOR: Kimberley Wild Expeditions

TRAVEL TYPE: Escorted coach

DEPARTS: Fri, Sun (May – Sep)

HIGHLIGHTS

- Visit Galvans Gorge, Adcock Gorge and Mt Barnett Station
- Marvel at the Bungle Bungle domes
- Admire the expansive beauty of Lake Argyle
- Explore El Questro Wilderness Park
- See the remarkable China Wall
- Discover Windjana Gorge and Bell Gorge

INCLUDES

- 10 nights camping accommodation
- Meals as specified
- Expert guide
- Transport by air-conditioned 4WD vehicle
- National park fees
- Return transfers from selected Broome accommodation

Camping Plus, sole use and child prices also available. A reasonable level of fitness is required.



BROOME & THE KIMBERLEY TOURING



Manning Gorge



Windjana Gorge

KIMBERLEY TRAIL 14 DAYS

Day 1: Windjana Gorge & Tunnel Creek (LD)

Depart Broome and travel through the remote and beautiful landscape, as the guide shares stories of local history, people and the environment. Enjoy a morning tea break by the Fitzroy River and visit the Derby 'Boab Prison Tree'. Join the Gibb River Road, and travel towards the Napier Range. The perfect place to experience the stunning natural beauty of an outback oasis is Windjana Gorge. Beneath gorge walls, search for freshwater crocodiles, local birdlife and Indigenous bush tucker, then enjoy a picnic lunch. Overnight at Windjana Gorge.

Day 2: Windjana Gorge to Mt Barnett (BLD)

The Napier Range is over 350 million years old and home to the geological wonder of Windjana Gorge. Spend the morning searching for freshwater crocodiles, local birdlife and indigenous bush tucker. In the afternoon continue to Bell Gorge, an idyllic retreat which boasts cascading waterfalls and crystal clear pools formed over millions of years. Spend the next two nights at Mt Barnett Cattle Station.

Day 3: Mt Barnett (BLD)

Spend the day exploring some of the Kimberley's beautiful gorges. Discover the cool waters of water lily-laden Galvans Gorge and stunning Adcock Gorge. Amid the rugged beauty of Manning Falls, swim in deep clear pools, relax, explore wandering streams, uncover local wildlife and take a dip in the waterfall pools.

Day 4: Mt Barnett to Mitchell Plateau (BLD)

A two day diversion to the majestic Mitchell Plateau is a highlight of the trip. Take on real 4WD country as you travel the rugged Kalumburu Road and Mitchell Plateau Track. After crossing rivers and passing through ancient Livistonia palm forests, emerge from the savannah and onto the Mitchell Plateau. Spend two nights at the National Park Campground in the Mitchell Plateau.

Day 5: Mitchell Plateau (BLD)

Today trek to Little and Big Merten Falls, take a dip in pristine plunge pools and view Bradshaw rock art. Return to camp on a short helicopter flight for a bird's-eye view of this extraordinary landscape.

Day 6: Mitchell Plateau to Drysdale Station (BL)

Travel to Drysdale River Station, a million acre, family owned and operated cattle station. On arrival, explore the nearby surroundings, sit back and enjoy a cold drink in the beer garden and warm yourself around the log fire in the cool night air. Overnight at Drysdale Station.

Day 7: Drysdale Station to El Questro Wilderness Park (BLD)

The journey continues along the Gibb River Road to the iconic El Questro Wilderness Park. Spending two nights at El Questro allows time to join one or more of the many activities on offer.

Day 8: El Questro Wilderness Park (BL)

Enjoy a free day to explore this beautiful park at your leisure. This could include a refreshing dip in the Zebedee Springs, a trek into El Questro Gorge, Emma Gorge or a cruise on Chamberlain Gorge (own expense).

Day 9: El Questro Wilderness Park to Lake Argyle (BD)

Emerge from the Gibb River Road for a few hours of free time in Kununurra. After lunch, travel onto the shores of the expansive Lake Argyle. Enjoy a refreshing afternoon swim in the infinity pool. Spend two nights at a private camp on Lake Argyle.

Day 10: Lake Argyle (BL)

Today, take up one of the many optional activities on offer such as scenic flights and kayak hire. Alternatively, join the guide to visit the historic Durack Homestead Museum or take on one of the many bush trails to explore the area.

Day 11: Lake Argyle to Purnululu National Park (BLD)

Head south to Purnululu National Park, home of the magnificent Bungle Bungles. Enjoy a Bungle Bungles sunset before settling in for a two night stay at Bungle Bungle Safari Camp.

Day 12: Purnululu National Park (BLD)

Explore Echidna Chasm, known for its towering Livistonia Palm trees, and take a short walk into stunning Cathedral Gorge, where towering rocks create a natural amphitheatre. In the afternoon take an optional scenic helicopter flight for a bird's-eye view of the beehive domes (own expense).

Day 13: Purnululu National Park to Fitzroy Crossing (BLD)

Enroute to Fitzroy Crossing, break the journey with a visit to the gold rush town of Halls Creek to see the remarkable China Wall. Overnight at Fitzroy Crossing.

Day 14: Fitzroy Crossing to Broome (BL)

Explore Old Fitzroy Crossing and have lunch by the river before returning to Broome where the tour concludes.

(B = breakfast, L = lunch, D = dinner)

From **\$5395*** per person twin share



14 DAYS | BROOME TO BROOME

OPERATOR: Kimberley Wild Expeditions

TRAVEL TYPE: Escorted coach

DEPARTS: Tuesdays (30 Apr – 3 Sep 24)

HIGHLIGHTS

- Explore spectacular Purnululu National Park
- Helicopter flight over Mitchell Plateau
- Explore El Questro Wilderness Park
- Discover the vast waters of Lake Argyle

INCLUDES

- 13 nights camping accommodation
- Meals as specified
- Expert guide
- Mitchell Falls Scenic Helicopter Transfer
- Zebedee Springs entry
- Transport by air-conditioned 4WD vehicle
- National park fees
- Return transfers from selected Broome accommodation

Child prices also available.



BAYSIDE HOLIDAY APARTMENTS



1 Bedroom

2 Anne Street, Broome
MAP PAGE 42

From **\$175***

- ❖ Enjoy views over glorious Roebuck Bay
- ❖ Matso's Brewery is located across the street
- ❖ Fully self-contained apartments

Location: Only a short walk from the centre of Broome with Matso's Brewery, several restaurants and essential services close by. Distances: Cable Beach 3.2km, Town centre 500m.

Property Features: Pool, Barbecue, Room service, Guest laundry, Parking (outdoor), 12 rooms.

Room Features: Separate living area, Air-conditioning, Fully equipped kitchen, Tea/coffee making facilities, Ironing facilities, Bathrobes, Hair dryer.

Max Capacity: 1 Bedroom – 3, 2 Bedroom – 5.

MOONLIGHT BAY SUITES



1 Bedroom

51 Carnarvon Street, Broome
MAP PAGE 42

From **\$230***

- ❖ Spacious, fully self-contained apartments
- ❖ Large resort-style pool with views overlooking Roebuck Bay
- ❖ A great place to view Staircase to the Moon

Location: On the edge of Roebuck Bay and a 15 minute walk to Chinatown. Distances: Cable Beach 4km, Town centre 1km.

Property Features: Pool, Barbecue area, Gym, Guest laundry, Non smoking, Parking (outdoor), 50 rooms.

Room Features: Air-conditioning, Fan, Kitchen with microwave, Dishwasher (2 Bedroom Bayview), Cable TV, In-room movies (free), Ironing facilities, Hair dryer.

Max Capacity: 1 Bedroom Suite/1 Bedroom Pool View – 3, 2 Bedroom Suite/2 Bedroom Bayview – 5.



FREE

OAKS CABLE BEACH RESORT



Studio

11 Oryx Road, Cable Beach
MAP PAGE 42

From **\$234***

- ❖ Four pools including lagoon-style and infinity pools
- ❖ Spacious and comfortable studios and apartments
- ❖ Laze on the sundeck while sipping a refreshing drink from the bar

Location: Close to downtown and Cable Beach. Distances: Cable Beach 600m, Town centre 4.5km.

Property Features: Pools (4), Restaurant, Bar, Parking (free), 150 rooms.

Room Features: Air-conditioning, Balcony or courtyard, Tea/coffee making facilities, Limited cooking facilities with microwave (Studio), Kitchen with microwave and dishwasher (1 and 2 Bedroom), Cable TV, Laundry (1 and 2 Bedroom).

Max Capacity: Studio – 2, 1 Bedroom – 3, 2 Bedroom – 5.

BLUE SEAS RESORT



1 Bedroom

10 Sanctuary Road, Cable Beach
MAP PAGE 42

From **\$250*^**

- ❖ Apartments have either verandahs or balconies overlooking both pools
- ❖ Fully self-contained apartments with teak furnishings
- ❖ Walking distance to all major local attractions

Location: Stroll to the white sands of Cable Beach and local attractions. Distances: Cable Beach 600m, Town centre 5km.

Property Features: Pools (2 – heated), Spa, Barbecue area, Guest lounge, Guest laundry, Parking (free), 44 rooms.

Room Features: Air-conditioning, Fan, Balcony, Kitchen with microwave and dishwasher, Washer/dryer, Ironing facilities, Hair dryer, All rooms non smoking.

Max Capacity: 1 Bedroom – 4.

^Minimum 3 night stay applies.



FREE



FREE

BROOME ACCOMMODATION

SEASHELLS BROOME



1 Bedroom

4-6 Challenger Drive, Cable Beach
MAP PAGE 42

From **\$260***

- ❖ Close to the white sands of Cable Beach
- ❖ Stylish, comfortable apartments and bungalows
- ❖ Freeform swimming pool surrounded by a sun lounge area

Location: Within walking distance to Cable Beach. Distances: Cable Beach 300m, Town centre 6km.

Property Features: Pools (2 – 1 children's), Barbecue area, Children's playground, Resort shop, Parking (free), 49 rooms.

Room Features: Air-conditioning, Fan, Balcony or verandah, Kitchen with convection microwave and dishwasher, Cable TV, In-room movies (free), Laundry, Ironing facilities, Hair dryer, Safe, All rooms non smoking.

Max Capacity: 1 Bedroom – 2, 2 Bedroom – 4, 3 Bedroom Bungalow – 6.



OAKS BROOME HOTEL



Hotel

99 Robinson Street, Broome
MAP PAGE 42

From **\$210***

- ❖ Comfortable hotel rooms and apartments surrounded by gardens
- ❖ All rooms have balconies or large decks, some with pool views
- ❖ A short walk to Broome Town Beach

Location: A 10 minute walk to local attractions. Distances: Cable Beach 6.2km, Town centre 2km.

Property Features: Pools (2), Restaurant, Café, Bar, Guest laundry, Non smoking, Parking (free), 173 rooms.

Room Features: Air-conditioning, Balcony, Limited cooking facilities (Studio), Kitchen (1 and 2 Bedroom), Cable TV, Washer/dryer (2 Bedroom), Ironing facilities, Hair dryer.

Max Capacity: Hotel/Studio – 2, 1 Bedroom/1 Bedroom Poolside – 3, 2 Bedroom/2 Bedroom Poolside – 5.



1 Bedroom Poolside



* FROM PRICES ARE A GUIDE ONLY, subject to change and availability and are in Australian Dollars. Prices are per room per night for 2 people, unless otherwise specified and based on the lowest room category for travel in low season. For full terms and conditions, refer to the Booking Conditions on the inside back cover of this brochure.

ECO BEACH WILDERNESS RETREAT, CAPE VILLARET



Garden View Eco Tent

Great Northern Highway, Cape Villaret
MAP PAGE 42

From **\$266***

- ❖ Self-sustainable tents and villas in pristine coastal bushland
- ❖ Enjoy complimentary daily yoga
- ❖ Wide range of activities including fishing, walks and kayaking

Location: In the heart of Yardoongarra country, amongst pristine landscape, south of Broome. Distances: Beachfront, Broome 130km.

Property Features: Free Wi-Fi (common area), Pool, Restaurant, Bar, Camp kitchen with barbecue, Day spa and yoga room, Children's playground, Parking (free), Electric car charging station, Airport shuttle transfer (extra charge), 55 rooms.

Room Features: 12V power, Ensuite (Eco Tents), Air-conditioning, Kitchenette, Private Ensuite (Eco Villas).

Max Capacity: Garden View Eco Tent/Sunset View Eco Tent – 2, Garden View Eco Villa/Ocean View Eco Villa/Ocean Front Eco Villa – 2 adults or 2 adults/1 child, Family Eco Tent – 2 adults/2 children.

Tents are not available between 1 Nov 24 and 31 Mar 25. The retreat is closed 1 Dec 24 – 31 Mar 25.



KIMBERLEY HOTEL, HALLS CREEK



Standard

Roberta Avenue, Halls Creek
MAP PAGE 42

From **\$185***

- ❖ Large modern rooms with wide verandahs
- ❖ On-site restaurant open for breakfast and dinner
- ❖ Pool area with sun lounges, cocktail bar and sports lounge

Location: Opposite the airport and a short walk into town. Distances: Town centre 500m.

Property Features: Free Wi-Fi (public areas only), Pool, Restaurant, Bars (2), Barbecue area, Guest laundry, Parking (outdoor), 148 rooms.

Room Features: Air-conditioning, Kitchen (1 & 2 Bedroom), Tea/coffee making facilities, Cable TV, Ironing facilities, Hair dryer, Safe.

Max Capacity: Standard – 2, Deluxe – 3, 1 Bedroom – 4, 2 Bedroom – 6.



THE BERKELEY RIVER LODGE, EAST KIMBERLEY



Kimberley Villa

Berkeley River, East Kimberley
MAP PAGE 42

From **\$2850*^**

- ❖ Remote accessible villas have incredible views of the coastline
- ❖ All villas feature open-air bathrooms
- ❖ Activities include cruises, 4WD excursions, fishing and guided walks

Includes all meals, selected alcoholic and non-alcoholic beverages with meals, selected activities, return scheduled air transfers from Kununurra or Darwin.

Location: Set between the northern Kimberley coast and the Berkeley River. Distances: Kununurra 120km.

Property Features: Free Wi-Fi (public areas only), Pool, Spa, Sundeck, Restaurant, Bar, Laundry service, 20 rooms.

Room Features: Air-conditioning, Ceiling fans, Deck, Tea/coffee making facilities, Open-air bathroom, Bathrobes, Hair dryer, All rooms non smoking.

Max Capacity: Kimberley Villa – 2.

^Minimum 5 night stay applies. Children 0-17 yrs – not catered for.

The property is closed 1 Oct 24 – 31 Mar 25 (dates are subject to weather conditions).



KIMBERLEY REGION ACCOMMODATION

KUNUNURRA COUNTRY CLUB RESORT, KUNUNURRA ♦♦♦♦



King

47 Coolibah Drive, Kununurra
MAP PAGE 42

From **\$240***

- ❖ Modern rooms set among tropical gardens
- ❖ Outdoor freeform swimming pool with two bars
- ❖ Walking distance to downtown Kununurra

Includes complimentary airport transfers – must be pre-booked more than 48 hours prior to travel+.

Location: In the heart of Kununurra and minutes to local attractions. Distances: Town centre 50m.

Property Features: Pool, Restaurant, Bars (2), Guest laundry, Parking (free), Resort shop, 88 rooms.

Room Features: Air-conditioning, Tea/coffee making facilities, Mini bar, Cable TV, Ironing facilities, Hair dryer.

Max Capacity: Twin/King – 2, Triple – 3.

Prices for room and breakfast are also available.

+ Available for scheduled commercial flights only. Departure transfer leaves the resort one hour prior to flight departure.



FRESHWATER EAST KIMBERLEY APARTMENTS, KUNUNURRA ♦♦♦♦



Studio

19 Victoria Highway, Kununurra
MAP PAGE 42

From **\$304***

- ❖ Set in lush tropical gardens overlooking Lily Creek Lagoon
 - ❖ Families will love the freeform pool, barbecues, sundeck and sun lounges
 - ❖ Modern, self-contained one, two and three bedroom apartments
- Includes complimentary airport transfers – must be pre-booked+.**

Location: A leisurely stroll from the Kununurra township. Distances: Town centre 1.2km.

Property Features: Pool, Barbecue area, Parking (free), 60 rooms.

Room Features: Air-conditioning, Fan, Patio, Limited cooking facilities (Studio), Kitchen (1, 2 and 3 Bedroom), Cable TV, DVD player, Ironing facilities, Hair dryer, All rooms non smoking.

Max Capacity: Studio/1 Bedroom/Deluxe 1 Bedroom – 2, 2 Bedroom – 4, 3 Bedroom – 6.

+ Transfers operate 7am-6pm Apr to Sep and 8am-5pm Oct to Mar.



DISCOVERY PARKS – LAKE KUNUNURRA ♦♦♦



Standard 1 Bedroom Cabin

Lakeview Drive, Kununurra
MAP PAGE 42

From **\$125***

- ❖ Enjoy tranquil views from the deck of your cabin
- ❖ Cabins are roomy and comfortable
- ❖ Keep an eye out for the local resident freshwater crocodile

Location: Set on 10 acres of bushland, on the edge of Lake Kununurra and a short distance to the town centre. Distances: Town Centre 3km.

Property Features: Pool, Boat ramp, Barbecue, Children's playground, Guest Laundry, Parking (free), 25 rooms.

Room Features: Air-conditioning, Balcony, Limited cooking facilities, Tea/coffee making facilities, Flat screen TV, Ironing facilities, Hair dryer.

Max Capacity: Deluxe 1 Bedroom Waterfront Cabin/Superior 1 Bedroom Cabin – 2, Deluxe 2 Bedroom Spa Cabin/Standard 1 Bedroom Cabin/Superior 2 Bedroom Cabin – 4



DISCOVERY RESORTS – LAKE ARGYLE ♦♦♦♦



Standard Studio

525 Lake Argyle Road, Lake Argyle
MAP PAGE 42

From **\$155***

- ❖ Panoramic views over Lake Argyle and the ranges
- ❖ Infinity swimming pool offering spectacular views
- ❖ Departure point for many Lake Argyle cruises

Location: Nestled in the Kimberley region, near expansive Lake Argyle. Surrounded by rugged landscapes, the resort offers panoramic views of the lake. Distances: Kununurra 70km.

Property Features: Free Wi-Fi (common areas), Infinity swimming pool, Spa, Restaurant, Bar, Barbecue, Convenience store, Guest laundry, Parking (free), Kimberley Durack cruise touring, 46 rooms.

Room Features: Air-conditioning, Balcony/patio, Limited cooking facilities (Studios), Fully equipped kitchen (1, 2 and 4 Bedrooms).

Max Capacity: Deluxe 1 Bedroom Lakeview – 2, Standard Studio/Deluxe Studio – 3, Standard Studio/Standard 2 Bedroom/Deluxe 2 Bedroom Lakeview – 5, Deluxe 4 Bedroom Lakeview – 10.

* FROM PRICES ARE A GUIDE ONLY, subject to change and availability and are in Australian Dollars. Prices are per room per night for 2 people, unless otherwise specified and based on the lowest room category for travel in low season. For full terms and conditions, refer to the Booking Conditions on the inside back cover of this brochure.

BELL GORGE WILDERNESS LODGE



Superior

Gibb River Road, West Kimberley
MAP PAGE 42

From **\$563***[^]

- ❖ View of the Precipice Range from your cabin deck
- ❖ All tents boast a large private deck
- ❖ Open-air dining under the stars each evening

Includes breakfast and a 3-course dinner daily.

Location: Easy access to explore Bell, Lennard, Adcock, Galvins, Manning, Barnett and Windjana gorges. Distances: Broome 442km.

Property Features: Free Wi-Fi (common areas), Lodge hosts, Liquor license, Open-air dining, 26 rooms.

Room Features: Comfortable tented cabins, Deck, Twin/king bedding, Linen, Private en suite, Toiletries.

Max Capacity: Superior Double/Superior Twin – 3.

[^]Based on a minimum 3 night stay. 1 and 2 night rates also available. Park permits and vehicle fees apply and are not included in the price. Refer to Travel Tips on page 7 for information on National Park fees and how to purchase passes.

Lodge is open 5 May to 26 Sep 24 (opening dates are subject to change at any time due to road/weather conditions).



BUNGLE BUNGLE WILDERNESS LODGE



Standard Twin



Superior

Purnululu National Park
MAP PAGE 42

From **\$518***[^]

- ❖ Explore the beehive domes of the Bungle Bungles and beautiful Piccaninny Creek
- ❖ Tented cabins are located in an idyllic bush setting
- ❖ Enjoy open-air dining

Includes breakfast and a 3-course dinner daily.

Location: In the heart of Purnululu National Park. Distances: Kununurra 315km.

Property Features: Free Wi-Fi (common areas), Lodge hosts, Liquor license, Open-air dining, Gourmet meals, 30 rooms.

Room Features: Tented cabins, Deck, Twin/king bedding, Linen, Private en suite, Toiletries.

Max Capacity: Standard Twin – 2, Superior Double/Superior Twin – 3.

[^]Based on a minimum 3 night stay. 1 and 2 night rates also available. Park permits and vehicle fees apply and are not included in the price. Refer to Travel Tips on page 7 for information on National Park fees and how to purchase passes.

Lodge is open 1 May to 19 Sep 24 (opening dates are subject to change at any time due to road/weather conditions).

MITCHELL FALLS WILDERNESS LODGE



Mitchell Plateau
MAP PAGE 42

From **\$518***[^]

- ❖ Fully-equipped bar and lounge to relax in after your day of sightseeing
- ❖ Private, palm-fringed, waterhole with swimming platform and deck
- ❖ All tents refurbished for the 2024 season

Includes breakfast and a 3-course dinner daily.

Location: Conveniently situated close to Mitchell Falls, an ideal base for exploring some of the Kimberley's most unforgettable attractions. Distances: Kununurra 523km.

Property Features: Free Wi-Fi (common areas), Lodge hosts, Liquor license, Open-air dining, Gourmet meals, 24 rooms.

Room Features: Tented cabins, Deck, Twin/king bedding, Linen, Private en suite, Toiletries.

Max Capacity: Superior Double/Superior Twin – 3.

[^]Based on a minimum 3 night stay. 1 and 2 night rates also available. Park permits and vehicle fees apply and are not included in the price. Refer to Travel Tips on page 7 for information on National Park fees and how to purchase passes.

Lodge is open 12 May to 23 Sep 24 (opening dates are subject to change at any time due to road/weather conditions).

KIMBERLEY WILDERNESS LODGES



EL QUESTRO

El Questro is a truly unique holiday destination, situated in the rugged and unspoiled Kimberley region. With over 700,000 acres of land, extending for approximately 80 kilometres, much of which remains unexplored, it is one of the last true frontiers.

El Questro offers a range of accommodation options to suit all budgets and tastes - from the rustic charm of Riverview and Gardenview rooms at The Station, to the natural immersion of safari-style Tented Cabins at Emma Gorge and the luxurious exclusivity of the Homestead. Each option provides a unique experience, allowing guests to fully immerse themselves in the untamed beauty of this extraordinary destination.

Tours available (extra charge): Chamberlain Gorge Cruise, Bird Watching Tour, El Questro Full Day Tour, Sunset Tour, Emma Gorge Walk & Zebedee Springs.

EL QUESTRO – EMMA GORGE



Tented Cabin

Via The Gibb River Road, East Kimberley
MAP PAGE 42

From **\$553***

- ❖ Sleep under canvas with the soothing sounds of wildlife
 - ❖ Emma Gorge Walk is only a short distance from your cabin
 - ❖ Modern safari-style tented cabins with fans and outdoor dining area
- Includes full breakfast daily and El Questro Visitor Permit.**

Location: Situated within the Cockburn Ranges. Distances: Kununurra 80km.

Getting There: 2 hour scheduled 4WD transfer from Kununurra. **\$140*** per person one way.

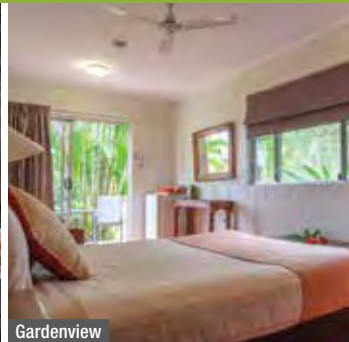
Property Features: Free Wi-Fi (common areas), Pool, Restaurant, Bar, Boutique, Guest laundry, 60 rooms.

Room Features: Fan, Private en suite, Tea/coffee making facilities.

Max Capacity: Tented Cabin – 3 or 4.

Property is closed 1 – 30 Apr, 20 Sep 24 – 31 Mar 25.

EL QUESTRO – THE STATION



Gardenview

Via The Gibb River Road, East Kimberley
MAP PAGE 42

From **\$485***

- ❖ Located on the Pentecost River, The Station is the hub of activity at El Questro
 - ❖ The Steakhouse, Cantina and Swinging Arm Bar offer a great spot to eat
 - ❖ Families will love the open spaces, swimming hole and nightly entertainment
- Includes El Questro Visitor Permit.**

Location: In the heart of the park, on the banks of the Pentecost River. Distances: Kununurra 110km, Emma Gorge 28km.

Getting There: 90 minute 4WD transfer from Kununurra. **\$163*** per person one way.

Property Features: Free Wi-Fi (common areas), Restaurant, Bar, Guest laundry, Retail shop, Fuel outlet, 33 rooms.

Room Features: Air-conditioning, Patio, Mini refrigerator, Tea/coffee making facilities, Ironing facilities, Hair dryer.

Max Capacity: Gardenview/Riverview – 3, Gardenview Family – 6.

Property is closed 25 Oct 24 – 31 Mar 25.

Station Tent accommodation also available. Ask your travel agent for details.

EL QUESTRO HOMESTEAD



Homestead Room

Via The Gibb River Road, East Kimberley
MAP PAGE 42

From **\$2805*^**

- ❖ Luxury homestead with suites overlooking the Chamberlain Gorge
- ❖ High-end dining, immersive experiences and genuine hospitality
- ❖ Tailored Kimberley experience with itineraries based on guest interests

Includes all meals and selected alcoholic beverages daily, mini bar stocked daily, selected touring and El Questro Visitor Permit.

Location: Nestled within the Kimberley's vast and ancient landscape and hidden amongst burnt-orange cliffs and lush, green lawns. Distances: Kununurra 115km, Emma Gorge 35km.

Getting There: 2 hour 4WD transfer from Kununurra. **\$168*** per person one way.

Property Features: Free Wi-Fi (common areas), Pool, Heli-pad, Communal degustation dining, Private dining experiences, Self-service bar, Library, Communal lounge space, Boutique retail offering, 10 rooms.

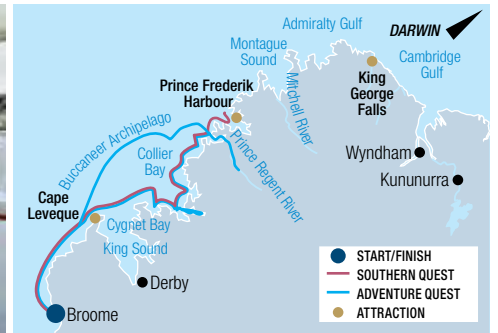
Room Features: Air-conditioning, Fan, Verandah, Tea/coffee making facilities, Mini bar, Private en suite, Hair dryer, Free standing bath (excluding Homestead Room).

Max Capacity: Homestead/Gorge View/Cliff Side Retreat/Chamberlain Suite – 2.

^ Minimum 3 night stay applies. Property does not cater to guests under 18 yrs.

Property is closed 25 Oct 24 – 31 Mar 25.

ALL INCLUSIVE



KIMBERLEY CRUISING – KIMBERLEY QUEST

Kimberley Quest II is a 24 metre expedition vessel custom built for the Kimberley region, allowing easy access to discover remote locations. With a choice of three cabin types, enjoy the pristine Kimberley wilderness in comfort and style. Carrying three excursion tenders, a shaded jetboat and helicopter on most cruises, days are filled with a myriad of activities. See vast tidal creeks, rugged gorges, massive waterfalls and pristine beaches. Swim in freshwater pools, explore historical sites and see ancient rock art galleries. Experienced guides are always on hand to share their extensive knowledge and bring your adventure to life.

VESSEL FEATURES:

- Helipad • Spa • Spacious sundeck
- Indoor alfresco area
- Comprehensive library
- Cable TV • Maximum of 18 guests

CABIN FEATURES:

- Air-conditioning • Private en suite
- Refrigerator • Viewing window
- 240 volt power • Daily servicing

INCLUDES:

- Onboard accommodation
- All meals on board
- 24 hour tea and coffee station
- Daily excursions
- Experienced guides
- Scenic helicopter flight over the Mitchell Falls and a light aircraft transfer to/from Broome (7 Night Southern Quest)
- Return transfers from accommodation

Available at an Extra Charge:

- Wi-Fi • Alcoholic beverages
- Scenic helicopter flights

7 NIGHT SOUTHERN QUEST – KIMBERLEY QUEST II

View many of the Kimberley's icons in the stunning southern region. Explore a land of extraordinary contrast and colour, rich in history, ancient Aboriginal rock art and breathtaking scenery. Enjoy a thrilling scenic helicopter flight over the Mitchell Falls.

- Day 1: Depart Broome, Cape Leveque
- Day 2: Buccaneer Archipelago, Dugong Bay, Talbot Bay
- Day 3: Collier Bay, Montgomery Reef
- Day 4: Doubtful Bay
- Day 5: Kuri Bay, Camden Harbour
- Day 6: Prince Regent River, Kings Cascade, Cathedral Falls
- Day 7: Prince Regent River, Careening Bay
- Day 8: Hunter River, scenic flight over Mitchell Falls, flight to Broome

From Broome (Cruise/Fly):

2024: Jun 4, 11#, 18, 25#, Jul 2, 9#, 16, 23#, 30, Aug 6#, 13, 20#
2025: May 26#, Jun 3, 10#, 17, 24#, Jul 1, 8#, 15, 22#, 29, Aug 5#, 12, 19#, 26, Sep 2#

Reverse itinerary (Fly/Cruise).

	2024	2025
Double Cabin	\$13,990** ^{^A}	\$14,990** ^{^A}
Superior Cabin	\$15,990** ^{^A}	\$16,990** ^{^A}
Flybridge Cabin	\$17,490** ^{^A}	\$18,490** ^{^A}

^{^A} \$153.60 (2024) and \$154.50 (2025) Daminangari Visitors Pass and Uunguu Gural Transit Visitors Pass per person is payable at the time of booking. ^{^A} \$99 per person Daminangari Visitors Pass per person is payable at the time of booking. Fees are subject to change without notice. Children: 0 to 14 yrs – not catered for. Due to unforeseen circumstances such as weather and tides, itineraries may be subject to change without notice. 3 Night Taste of the Kimberley, 7 Night Northern Quest, 13 Night Ultimate Quest and 20 Night Beyond Adventure cruises also available. Ask your travel agent for dates, prices and cabin types.

9 NIGHT ADVENTURE QUEST – KIMBERLEY QUEST II

Undertake an extensive exploration of the southern Kimberley, visiting unknown sites, rarely visited islands and 'secret spots'. Enjoy pristine beaches, fish for Barramundi and visit icons such as the Horizontal Falls, Montgomery Reef and Kings Cascade.

- Day 1: Depart Broome to Cygnet Bay
- Day 2: Buccaneer Archipelago, Talbot Bay, Horizontal Falls
- Day 3: Surprise Falls, Secure Bay
- Day 4: Montgomery Reef
- Day 5: Doubtful Bay, Red Cone Creek, Ruby Falls, Camden Sound
- Day 6: Camden Harbour, Rothsay Water
- Day 7: Prince Regent River, Kings Cascade, Cathedral Falls
- Day 8: Hanover Bay, Booby Island
- Day 9: Heywood & Champagne Islands
- Day 10: Arrive Broome

From Broome:

2024: Aug 27, Sep 5, 14, 24
2025: Sep 10, 19, 29

	2024	2025
Double Cabin	\$12,900** ⁺	\$13,900** ⁺
Superior Cabin	\$13,900** ⁺	\$14,900** ⁺
Flybridge Cabin	\$15,900** ⁺	\$16,900** ⁺

KIMBERLEY CRUISING



True North - Clerke Lagoon, Rowley Shoals



True North

KIMBERLEY CRUISING – TRUE NORTH ADVENTURE CRUISES

For more than 35 years, True North Adventure Cruises has provided unrivalled access to the Kimberley region. Both True North and True North II are purpose-built to unlock remote wilderness areas inaccessible to bigger ships. Designed to satisfy the world's most discerning travellers, the curated itineraries offer unparalleled access to stunning coastal environments, exquisite local sights and unique activities you won't find anywhere else.

Discerning adventurers embarking on a journey onboard the True North, can take advantage of the lavish vantage points including a sundeck, forward observation lounge and alfresco bar. Catering to 36 guests, True North features 18 cabins over three decks.

True North II promises a more personal adventure, with a smaller group of just 20 guests. The combined dining saloon and lounge offers the perfect setting in which to savour the pristine beauty of the outdoors. True North II offers 10 cabins over two decks.

The crew on both True North and True North II are very much a part of onboard life. Every day is an adventure, and their enthusiasm and passion are evident in the service they provide. Not only will they bait your hook and carry your SCUBA tank, they will also prepare fine meals of distinction, maintain your cabin with their renowned degree of attention and safely navigate the ship, boats and helicopter to each destination.

Choose True North or True North II – now there's an adventure for everyone!

VESSEL FEATURES:

- Internet facilities
- Sundeck
- Alfresco bar
- Dining room and/or lounge
- Adventure boats
- Helicopter
- Maximum guests: True North – 36, True North II – 20

CABIN FEATURES:

- Ensuite or private facilities
- Air-conditioning
- Satellite phone

INCLUDES:

- Onboard accommodation
- All meals and non-alcoholic beverages on board
- Daily activities in the adventure boats
- Laundry services
- Satellite Wi-Fi
- Port charges
- Local transfers to/from ship

Available at an Extra Charge:

- Alcoholic beverages
- Merchandise
- Scenic flights



True North II – King George Falls



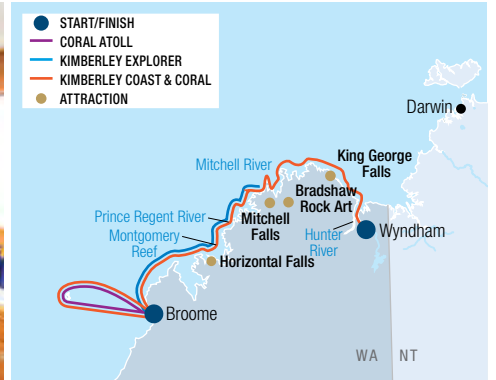
True North II – Kings Cascade, Kimberley



True North II



True North II Explorer Class Cabin



5 NIGHT CORAL ATOLL CRUISE – TRUE NORTH II

A Rowley Shoals adventure focused on snorkelling, diving, whale watching, fishing and relaxing amid a breathtaking coral habitat. Five nights of stylish adventure for the whole family.

- Day 1: Depart Broome
- Day 2: Clerke Reef – the Aquarium
- Day 3: Clerke Reef – Bedwell Island
- Day 4: Clerke Reef – The Lagoon
- Day 5: Clerke Reef – Outer Walls
- Day 6: Arrive Broome

From Broome at 5pm:

- 2024: Sep 3, 8, 14, 19
- 2025: Aug 23, 28, Sep 13, 18, Oct 14, 19

10 NIGHT KIMBERLEY EXPLORER – TRUE NORTH II

Explore the Kimberley with ample time at iconic destinations including Horizontal Waterfalls, Montgomery Reef, The Prince Regent, The Hunter and The King George.

- Day 1: Depart Wyndham
- Day 2: King George River and Falls, Tranquil Bay
- Day 3: Eagle Falls, Bradshaw Rock Art
- Day 4: Surveyors Creek, Mitchell Falls
- Day 5: Swift Bay
- Day 6: Hunter River, Jackson Falls, Prince Frederick Harbour
- Day 7: St George Basin
- Day 8: Prince Regent River, Kings Cascades
- Day 9: Raft Point, Montgomery Reef, Ruby Falls
- Day 10: Horizontal Falls, Silica Beach
- Day 11: Arrive Broome

From Broome at 5pm:

- 2024: Jun 22⁺, Jul 2, 13⁺, 23, Aug 3⁺, 13
- 2025: Apr 15, May 24⁺, Jun 3, Jul 12⁺, 22, Aug 2⁺, 12

⁺Cruise operates in reverse.

10 NIGHT KIMBERLEY COAST & CORAL – TRUE NORTH II

Combine the best of two equally stunning locations – the Kimberley coast and the Rowley Shoals. See all the coastal icons, then immerse yourself in one of the world's most rare habitats.

- Day 1: Depart Broome
- Day 2: Horizontal Falls
- Day 3: Prince Regent River
- Day 4: Picnic Day
- Day 5: Hunter River
- Day 6: Raft Point, Ruby Falls
- Day 7: Montgomery Reef
- Day 8: Rowley Shoals – Clerke Reef
- Day 9: Clerke Reef – The Lagoon
- Day 10: Clerke Reef – Bedwell Island
- Day 11: Arrive Broome

From Broome at 5pm:

- 2024: Aug 24, Sep 25, Oct 5, 16
- 2025: Sep 2, 23, Oct 4

	2024	2025
Ocean Class	\$6595* ^{^A}	\$6595* ^{^A}
River Class	\$8595* ^{^A}	\$8595* ^{^A}
River Premium	N/A	\$8995* ^{^A}
Explorer Class	\$9595* ^{^A}	\$9995* ^{^A}

	2024	2025
Ocean Class	\$17,995* ^{^A}	\$17,995* ^{^A}
River Class	\$20,995* ^{^A}	\$20,995* ^{^A}
River Premium	N/A	\$21,995* ^{^A}
Explorer Class	\$22,995* ^{^A}	\$23,995* ^{^A}

	2024	2025
Ocean Class	\$17,995* ^{^A}	\$17,995* ^{^A}
River Class	\$20,995* ^{^A}	\$20,995* ^{^A}
River Premium	N/A	\$21,995* ^{^A}
Explorer Class	\$22,995* ^{^A}	\$23,995* ^{^A}

^{^A} \$242 Visitor Pass Fee per adult will be added to your ship account upon boarding. This fee is subject to change without notice. Due to prevailing conditions and local arrangements, itineraries are subject to change without notice. Child prices on application. Cruises to other destinations on True North and True North II are also available - ask your travel agent for details and prices.

^{*}FROM PRICES ARE A GUIDE ONLY, subject to change and availability and are in Australian Dollars. Prices are per person twin share, unless otherwise specified. For full terms and conditions, refer to the Booking Conditions on the inside back cover of this brochure.

ACCOMMODATION INDEX

PERTH		ROTTNEST ISLAND		RAC Exmouth Cape Holiday Park.....	41
Comfort Inn & Suites Goodearth Perth.....	23	Discovery Resorts – Rottneest Island.....	31	RAC Monkey Mia Dolphin Resort.....	40
Crown Metropolis Perth.....	26	MARGARET RIVER & THE SOUTH WEST		Sal Salis Ningaloo Reef.....	40
Crown Promenade Perth.....	24	Abbey Beach Resort, Busselton.....	34	BROOME	
Crown Towers Perth.....	26	Cape Lodge, Yallingup.....	35	Bayside Holiday Apartments.....	49
Crowne Plaza Perth.....	25	Comfot Inn Bay of Isles, Esperance.....	36	Blue Seas Resort.....	49
Duxton Hotel Perth.....	27	Hospitality Esperance, SureStay Collection by Best Western.....	36	Moonlight Bay Suites.....	49
Holiday Inn Perth City Centre.....	24	Margarets Beach Resort, Gnarabup Beach.....	35	Oaks Broome Hotel.....	50
Holiday Inn West Perth.....	23	Margarets In Town Apartments, Margaret River.....	35	Oaks Cable Beach Resort.....	49
Hyatt Regency Perth.....	27	RAC Busselton Holiday Park.....	34	Seashells Broome.....	50
InterContinental Perth City Centre.....	28	RAC Karri Valley Resort, Pemberton.....	36	THE KIMBERLEY REGION	
Metro Hotel Perth.....	23	Seashells Yallingup.....	34	The Berkeley River Lodge, East Kimberley.....	51
Metro Hotel Perth City.....	23	Sleepwell Motel Albany.....	36	Discovery Parks – Lake Kununurra.....	52
Novotel Perth Langley.....	25	Smiths Beach Resort, Yallingup.....	34	Discovery Resorts – Lake Argyle.....	52
Quality Hotel Ambassador Perth.....	24	CORAL COAST		Eco Beach Wilderness Retreat, Cape Villaret.....	51
Vibe Hotel Subiaco Perth.....	25	Hospitality Carnarvon, SureStay Collection by Best Western.....	39	Freshwater East Kimberley Apartments, Kununurra.....	52
PERTH SURROUNDS		Hospitality Geraldton, SureStay Collection by Best Western.....	39	Kimberley Hotel, Halls Creek.....	51
Esplanade Hotel Fremantle – By Rydges.....	28	Kalbarri Edge Resort.....	39	Kununurra Country Club Resort.....	52
Quality Resort Sorrento Beach.....	29	Nesuto Geraldton Apartment Hotel.....	39	Bell Gorge Wilderness Lodge.....	53
Rendezvous Hotel Perth Scarborough.....	29	Mantarays Ningaloo Beach Resort, Exmouth.....	41	Bungle Bungle Wilderness Lodge.....	53
Seashells Mandurah.....	29	Potshot Hotel Resort, Exmouth.....	41	El Questro – Emma Gorge.....	54
Seashells Scarborough.....	29			El Questro Homestead.....	54
				El Questro – The Station.....	54
				Mitchell Falls Wilderness Lodge.....	53



True North II, Kimberley

Please read these Booking Conditions carefully as they apply to all bookings with Viva Holidays.

HOW TO BOOK

Contact your ATAS travel agent and request a reservation. All verbal quotes provided are an estimate only and subject to change until confirmed in writing.

PRICES & CONDITIONS

This brochure was produced on 19 January 2024. Unless otherwise stated, prices are in Australian dollars and include GST where applicable. All prices are subject to availability, subject to change and can be withdrawn or varied without notice. Prices are to be used as a guide only. Accommodation prices are based on the lowest room category in low season. All other prices are based on travel in low season. Price changes may occur by reason of matters outside our control which increase the cost of the Product or Service. Such factors include (without limitation) adverse currency fluctuations, fuel surcharges, or increase to taxes. Surcharges and minimum stays may apply due to demand, Christmas and New Year's Eve, school and public holidays, special events and other circumstances. All prices are the lowest available prices at the time of print and are a guide only. Please check all prices, availability, fees, conditions and information with your travel agent before booking.

If we must change any part of your booking for reasons beyond our control, for example, an Accommodation Supplier overbooks accommodation, or if there is an increase in taxes or Supplier charges, we will notify you. If any such changes result in your holiday costing more or otherwise being materially different from that originally booked, you may cancel the booking and we will refund any monies already paid less any charges levied by Suppliers.

PRICES DO NOT INCLUDE

Anything not specifically indicated as being an inclusion.

OMISSIONS & ERRORS

While every effort is made to ensure the accuracy and currency of the information in the brochures, errors or omissions may occur. All errors and omissions identified post the date of publication are notified to our retail partners to advise you. Please check with your agent for all up-to-date corrections, including prices and inclusions.

DEPOSITS & FINAL PAYMENTS

Deposit

A minimum non-refundable deposit of \$55 per person is payable within 7 days of confirmation of your booking. You will be notified at the time of booking if any additional deposit is required. All deposits are non-refundable for changes of mind or cancellations by you (subject to your rights under the Australian Consumer Law).

Final Payment

Final payment of your holiday cost is required no later than 30 days prior to departure or by sale end date or by the payment deadline specified in individual package conditions, whichever is earlier. Some services may require full payment at the time of booking. For bookings made less than 31 days prior to travel, full payment of holiday cost is required at the time your booking is confirmed.

Please ensure payments are made by the due dates. If this does not happen, our system will automatically cancel the booking without notice or liability to you.

Only upon payment of the full cost of your holiday do you have a final booking with the Supplier of the relevant good and/or service. In arranging your booking, Viva Holidays is acting as the agent of the Supplier of the relevant Product and at no time do you have a contract with Viva Holidays.

CREDIT & DEBIT CARD SURCHARGES

A fee will apply for payments made by debit and credit cards. Fees may vary depending on card type. Please check this fee with us or your travel agent when booking.

FEES

Amendment Fees

If you wish to change your booking prior to departure, an amendment fee of \$30 will be charged if the overall value of the booking remains the same or decreases, in addition to any fees imposed by the Supplier of each service booked.

Late Booking Fees

A fee of \$30 will be charged for all bookings made less than 7 days prior to travel.

All fees can be varied without notice.

CANCELLATIONS & REFUNDS

Prior to Final Payment

Your deposit is forfeited.

After Final Payment

There will be no refund of your deposit, in addition to any fees imposed by the Supplier, which may be up to 100% of monies paid.

After Travel

There will be no refund if you cancel your booking once travel has commenced. There will be no refund for unused services, except for OPEN DATED services where the service was not booked with the Supplier. Requests for refunds received more than 6 months after departure date will not be accepted.

Should a refund after departure be approved, a \$110 refund processing fee will apply.

RESPONSIBILITY

Viva Holidays acts as an agent for the Suppliers (transport, tour, event or accommodation providers) who provide the various goods and/or services (Products). All bookings are subject to the terms and conditions and limitations of liability imposed by each Supplier. It is therefore important for you to obtain and read the applicable Supplier's terms and conditions as they may limit or exclude their liability to you.

In producing this brochure, we have used information provided by Suppliers. Irrespective of any measures taken by us to ensure the information contained in this brochure is accurate at the time of printing, Viva Holidays disclaims and will be exempt from liability in respect of anything misleading, false, incomplete or inaccurate and any errors, misdescription and all associated disappointment, loss, expense, damage, inconvenience, delay, death, shock, illness or injury, however caused.

Viva Holidays does not control the manner in which Products featured within this brochure are provided. Viva Holidays disclaims and will be exempt from liability for anything to do with the supply of such Products. This includes liability (whether as a matter of contract, tort, statute, restitution, or otherwise) for any direct, indirect or consequential loss, liability, claim, cost, expense, proceeding, demand, penalty, disappointment, death, injury, illness, shock, inconvenience or delay. This limitation of liability also applies irrespective of the cause, including negligence of us or a Supplier, withdrawal, cancellation or failure to provide a Product, delay, any variation in the Product, the provision of substitute Products or a change in the Supplier. Without limitation, Viva Holidays will not be responsible if the Product is not available due to inclement weather conditions or other acts of God, civil disturbances, fire, floods, acts of Government or any other authorities, accident to or failure of machinery or equipment or industrial action.

MAPS & PHOTOGRAPHS

The maps in this brochure are intended as a guide only and are not to scale. They do not necessarily reflect actual routings or accommodation or attraction locations. Accommodation room photographs are representative only and actual rooms occupied may vary in decor and inclusions from those shown.

Some images used in this brochure are supplied courtesy of tourist bureaus, hotels, tour operators, Tourism Australia, Tourism Western Australia, Aeroture, Andrew Halsall, Ben Knapinski, Brett Earl, Carla Atley, Chris De Blank, Cj Maddock, D-Max Photography, Damian Lugowski, Dan Avila, Danciewicz Piotr, Dion Robeson, Edward Tran, Frances Andrijich, George Apostolidis, Gerard Vivian Nezar, Imagevixen, Jem Cresswell, Jess Kearney, Joel Barbitta, Joel Barbitta, Jon Davison, Juliana Malta, Lachlan Ross, Lauren Bath, Mauro Risch, Natasha Seymour, Neal Pritchard, Neal Pritchard Photography, Oliver Oldroyd, Osprey Creative, Paul Pichugin, Philip Schubert, Powerhouse Productions, Rachael Yells, Robert Frith, Ryan Ammon, Sascha Unger, Shaana Mcnaught, Sky Perth Pty Ltd, Skyla Sage Photography, Steve Strike, Taryn Yeates, Timothy M Campbell, Tony Hewitt and Travis Hayto Outer Bounds Photography.

PRODUCT DESCRIPTIONS

Product descriptions and accommodation ratings featured in this brochure are provided by the individual Suppliers. Facilities, features or ratings are subject to change at any time. Tours may not operate on certain dates and durations and departure times are approximate only. You should check at the time of booking for any changes to published information of which we may be aware.

BONDS

Bonds or credit card imprints are required by most Suppliers at the time of check-in to cover incidentals and fees not included in your holiday cost.

TRANSFERS & TOURS

Some Accommodation Suppliers provide courtesy transfers to/from the airport. It is essential that these transfers are pre-booked. Some Tour Suppliers provide complimentary pick up and return to your holiday accommodation and require a minimum number of passengers to operate. If minimum numbers are not achieved tours may be cancelled at short notice. Additionally, some Suppliers reserve the right to cancel departures for other reasons, including bad weather. Some tours and itineraries may also vary and attractions may be substituted due to seasonal conditions. Viva Holidays will not be held liable for a service variation, cancellation, delay or withdrawal, or a Supplier's failure to notify you. A full refund applies for the cancelled tour.

TRAVEL INSURANCE

We strongly recommend you take out appropriate travel insurance to cover your travel arrangements.

PRIVACY

Viva Holidays collects information about you (including health information where necessary) to provide products and services to you, process your travel arrangements, facilitate your participation in loyalty programs and conduct marketing activities and market research. If the information is not provided, Viva Holidays may not be able to provide the Service requested. Viva Holidays may disclose your personal information to its related companies, carriers, travel service providers, organisations which provide services to Viva Holidays (more details are available in our Privacy Statement on our website vivaholidays.com.au) and various law enforcement agencies, airports and governments around the world for security, customs and immigration purposes. You may gain access to the information Viva Holidays holds about you by contacting our Privacy Officer in writing at 179 Normanby Road, South Melbourne VIC 3205 Australia or on privacyofficer@vivaholidays.com.au.

MONIES NOT HELD ON TRUST

All monies paid by you to us will be the property of Viva Holidays and will be a debt due and payable to the relevant Supplier (contingent on availing) once the services to which the money relates have been availed, or the relevant booking is cancelled (subject to cancellation fees). You agree and acknowledge that such monies will not be held by Viva Holidays on trust for or on behalf of you, and we may hold such monies in any account as we see fit, including with our own and/or other customer monies.

GOVERNING LAW

These conditions are governed by the laws of New South Wales, Australia and any action arising under them or in any way connected with a booking may be brought only in a court in New South Wales, Australia, subject to any law which is expressly inconsistent with this.

You acknowledge that you are 18 years of age or older and that you understand and agree with the above terms and conditions and our Privacy Policy. Please read our full booking terms and conditions at vivaholidays.com.au/policies/booking-conditions.

Travel insurance to help you on your way



nib Travel Insurance Distribution Pty Limited, ABN 40 129 262 175, AR 336467 is an authorised representative of nib Travel Services (Australia) Pty Ltd (nib), ABN 81 115 932 173, AFSL 308461 and act as nib's agent and not as your agent. This is general advice only. Before you buy, you should consider your needs, the Product Disclosure Statement (PDS), Financial Services Guide (FSG) and Target Market Determination (TMD) available from us. This insurance is underwritten by Pacific International Insurance Pty Ltd, ABN 83 169 311 193.



helloworld
TRAVEL
THE TRAVEL PROFESSIONALS



In store



13 14 15



helloworld.com.au

WE'RE PROUD TO BE
ATAS
travel accredited

VIVA
HOLIDAYS